

Basics of HACCP

August 24-25, 2021 • Bismarck, ND



Hazard Analysis and Critical Control Points (HACCP) training is required by USDA-FSIS for its inspected facilities and many food manufacturers and wholesalers require their suppliers and vendors to have a working and audited HACCP plan.

HACCP is also required for most advanced third-party auditing schemes, including SQF.

Basics of HACCP is an interactive, two-day course. Upon completion, participants will receive a certificate from the International HACCP Alliance.

[Click for Info and Registration](#)

Supply Chain Scouting System

Impact Dakota is partnering with NIST Manufacturing Extension Partnership (NIST MEP) and our nationwide network of 50 other MEP Centers across the U.S. and Puerto Rico to help solve supply chain gaps encountered by manufacturers, government entities, and critical service providers.

Do you have a gap? Are you able to fill a gap?

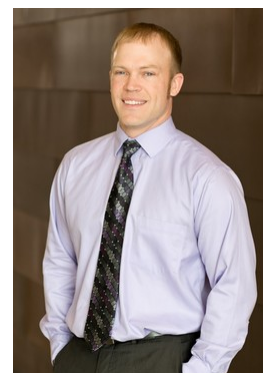
Please click on the button below to learn more about the system, or [CLICK HERE TO VIEW THE CURRENT LIST OF NEEDS!](#)

[Learn About Supplier Scouting](#)

MANUFACTURING *in Lehman's Terms*

Incentives 101: New or Expanding Business Income Tax Exemption

Last month's Lehman's Terms article kicked off North Dakota's tax incentive offerings with the property tax exemption for new and expanding businesses. This month I would like to continue down that road with another good incentive that manufacturing operations have at their disposal. We are seeing a lot of manufacturing operations looking at investing in North Dakota and this exemption is a perfect fit for those looking to do so. The New or Expanding Income Tax Exemption allows a new or expanding primary sector or tourism business an exemption on their net taxable income pertaining to the new or expanding portion of their business for up to five years.



Dave Lehman
dlehman@nd.gov
701-226-0309

[Click here to read full article!](#)

Commonly Misused Terms in Cybersecurity

Data vs. Information vs. Knowledge. Threat vs. Risk. When it comes to cybersecurity there is still much confusion about even ubiquitous terms. Check out this unofficial list of some commonly misused terms in the field of cybersecurity to understand these key terms and how they are used.

[What Does That Really Mean?](#)

Maximizing Profitability with an MES

You may have met your output goal for the month and delivered products as promised, but did you incur unexpected downtime or extra costs associated with repairs or overtime? A Manufacturing Execution System (MES) provides answers by utilizing real-time data to link your production processes with financial performance and is a fast track for moving past problem finding to actually solving problems.

[Analyze Your Operation](#)

The Latest Trends in U.S. Manufacturing Business Conditions (June 2021)

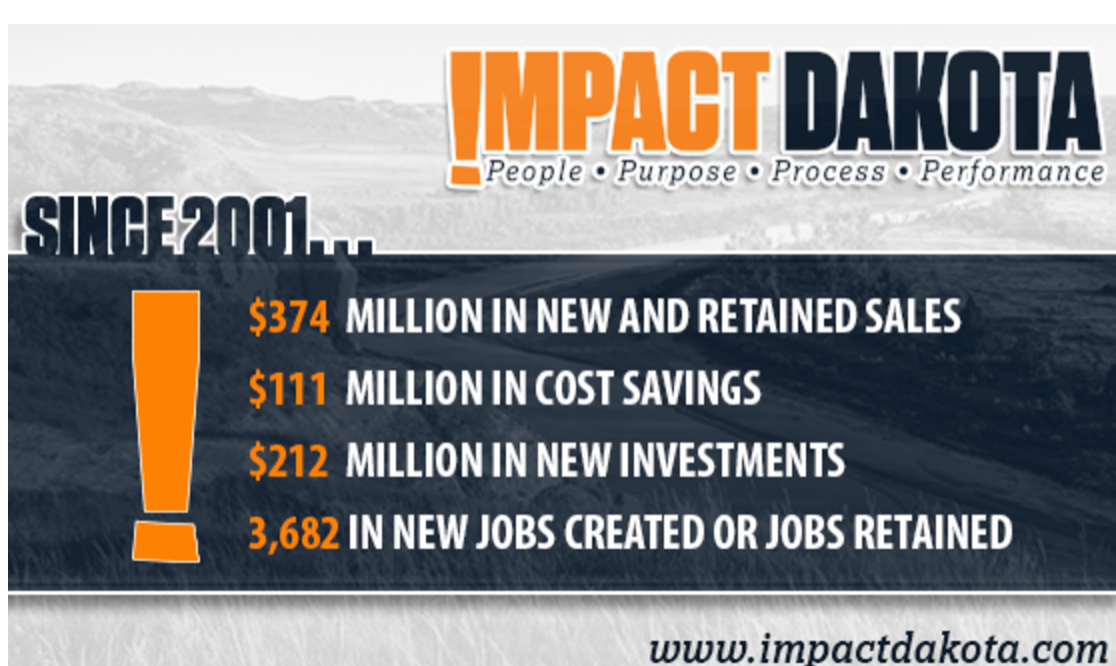
As demand continues to surge, U.S. manufacturing companies are seeing rapid growth, yet the sector is facing some major obstacles. So what are the latest numbers as we head into the third quarter? Today, we're compiling key takeaways from the month's most vital industrial reports, delivering insights on manufacturing output, labor, regional activity, optimism and more.

[Manufacturing Trends](#)

Introducing the MEP Workforce Database

If you want to understand how the #MEPNationalNetwork is approaching workforce development across the 50 States and Puerto Rico, what do you do? The Network has developed the MEP Workforce Database that contains information on what programs MEP Centers are currently offering and what programs Centers would like to offer in the future. Since this database is presently only accessible by MEP Centers, you can contact your local MEP Center to gain some of the insights it contains. #workforcedevelopment

[Read about the MEP Workforce Database](#)



Visit us on Social Media!



Positively impacting business results of manufacturers and other industries.

www.impactdakota.com • 701-204-7000 • 866-297-8250

Impact Dakota is the official representative of the MEP National Network in North Dakota.

Share this email:



[Manage](#) your preferences | [Opt out](#) using TrueRemove™

Got this as a forward? [Sign up](#) to receive our future emails.

View this email [online](#).

1929 N. Washington St., Suite M
Bismarck, ND | 58501 US

This email was sent to .

To continue receiving our emails, add us to your address book.

emma

[Subscribe](#) to our email list.