


dakotaMEP
Maximizing Enterprise Performance

Introduction to Consortia Development



Accelerated Learning Networks

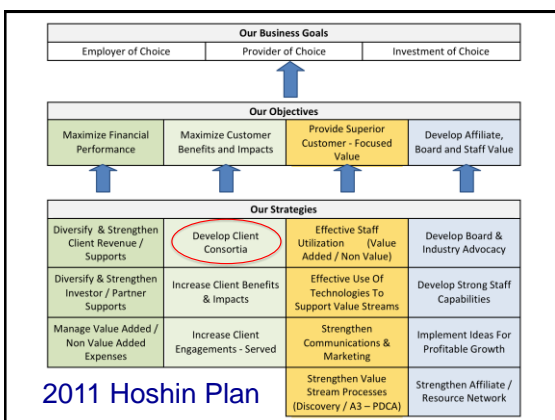
dakotaMEP
Maximizing Enterprise Performance

Our Guests Today

Robert Kerr, David Hogg
High Performance Solutions
Kitchener, Ontario

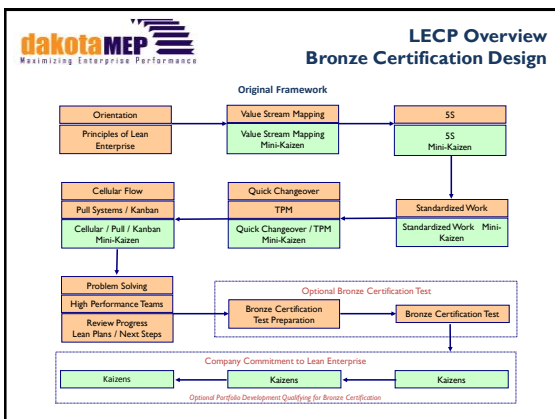
Let's Introduce Ourselves

Name, Title / Function / Company











dakotaMEP
Maximizing Enterprise Performance

**Lean Enterprise
Certification Partners**

- **AME – Association for Manufacturing Excellence**
 - Founded in 1985 is a non-profit organization dedicated to cultivating understanding, analysis and exchange of productivity methods and their application. AME is practitioner based – focused on hands on learning. www.ame.org
- **SME – The Society of Manufacturing Engineers**
 - World's leading professional society supporting manufacturing education. SME influences more than half a million manufacturing engineers and executive annually with members in 70 countries and hundreds of chapters. www.sme.org
- **The Shingo Prize**
 - Established in 1988 to promote awareness of Lean manufacturing concepts and recognize companies that achieve world-class manufacturing status. www.shingoprize.com
- **ASQ - American Society for Quality**
 - ASQ advances learning, promotes quality improvement, and unites quality professionals and organizations worldwide. We provide networking, access to information, solutions, and professional development resources.
- **University of Phoenix** - Provides related college credit to the certification.



dakotaMEP
Maximizing Enterprise Performance

**June, 2007 LECP Overview
Manufacturing Partners**

Partner Companies


- Amberwaves
- Angus Palm
- Cardinal IG
- Croy Company
- DMI Industries
- Electronic Systems Inc.
- EMPI
- Enercept
- Falcon Plastics
- Gell
- Global Electric Motors
- Gremada Industries
- Hutchinson Technology
- Imation
- Kildeer Mountain Mfg
- Kolberg-Pioneer
- Mt Tron
- Marvin Windows
- O'Day Equipment
- Prest Rack
- Pump Systems
- Showplace Wood Products
- Steffes
- Sun-Co
- 3M
- Watertown Box
- Weather Star



Average Company
Investment in Participant
Time per Position is \$2,000.
To date manufacturers have
invested an estimated
\$400,000 in staff time.
North and South Dakota
participants have the highest
completion and pass
percentage of any LECP
initiative in the country –
86% higher than SME.

Positions

- Accountants
- Business Unit Manager
- Engineers
- Focused Factory Manager
- Inside Sales
- Machine Operators
- Maintenance Supervisor
- Manufacturing Engineers
- Materials Manager
- Molding Technicians
- Operations Manager
- Plant Managers
- Process Technicians
- Product Development
- Production Supervisors
- Purchasing Managers
- Quality Managers
- Shift Supervisors
- Supervisors
- Team Leaders
- Supply Chain Managers
- Warehouse Supervisors



dakotaMEP
Maximizing Enterprise Performance

**Through June, 2010
LECP Overview**

Dakota MEP LECP Activity (Through June, 2011)		
1	LECP Manufacturing Companies	56
2	LECP Manufacturing Participants (11% of nation's total participants)	550
3	LECP SME Bronze Certification Test / Passed	540
4	LECP SME Bronze Certification Test Scores Average (Highest in U.S.)	90%
5	LECP SME Bronze Qualified (SME Test + 5 Tactical Improvement Projects)	10
6	LECP SME Silver Qualified (Must Have Bronze Certification As Base)	0
7	LECP SME Gold Qualified (Must Have Bronze & Silver Certification As Base)	0
8	LECP Manufacturing Company Projects	60
9	LECP Manufacturing Company Reported Benefits & Impacts (MEP NIST)	\$79,211,307
10	Average LECP Manufacturing Company Reported Benefits & Impacts	\$1,320,188
11	LECP Client Revenue Received By Dakota MEP	\$910,231
12	Estimated Value of Client Time Invested in LECP (\$2,000 per Participant)	\$1,100,000

Dakota MEP

Introduction to Consortia Development

Select Dakota MEP & SME LECP Company Participants – June, 2011				
3M	Cloverdale Foods	Graphics Packaging	MTRON PTI	StarMark Cabinetry
Abrasive West	Club Coffee LP	Gremada Industries	O'Day Equipment	Steffes
Alien Technology	Corning Cable Systems	GT Solar	OEM Worldwide	Tecton Products
Amber Waves	Crary Company	Halliburton	Personiz	Thermo Bond Building
American Italian Pasta	Crown Equipment	Homesfield	Pioneer Aerospace	Tiger Corporation
Amity Technology	Custom Graphics	Hutchinson Technology	PPD USA	TMI Systems Design
Angus Palm	Dakota Fluid Power	Hytek Finishes	Precision Craft Log	Trail King Industries
Baker Boy Supply	Dakota Tube	Imation	Primewood	Trussbilt
Ballard Power Systems	Del Monte	Intel	Quest Aircraft	Truth Hardware
Bausch & Lomb	DMI Industries	Killdeer Mountain	Raven Industries	United Airlines
Bemis Associates	EMPI	Kolberg Pioneer	Raytheon	US Synthetic
Benchmark Foam	Enercept	Kivchak Marine	S & C Electric	Varian Semiconductors
Buck Knives	ESI	Leach International	Showplace	Watertown Box
Bush Hog LLC	Esterline	Lifetime Products	Silgan Containers	WCCO Belting
Capital One	Falcon Plastics	Lund Boat	Sioux Manufacturing	Woodland Cabinetry
Cardinal IG	Mersen	Marvin Windows	Solar Bee	Woods Equipment
Caterpillar	Funshine Express	Medtronic	Spartan Electronics	
CCL Label	Gehl Company	Memorial Health	Spectrum Aeromed	
Chromalox	Global Electric Motors	Mid-American Aviation	Stampin' Up	
