

MEPNN Supplier Scouting Opportunity Synopsis

Section 1: General Information

| | |
|--------------------|---|
| Scouting Number | 2025-264 |
| Item to be Scouted | Timer with Knob |
| Days to be scouted | 21 |
| Response Due By | 09/03/2025 |
| Description | 1) Timer Knob; includes M4x8mm set screw, with 2) Timer; 30 mins; 6 mm diameter shaft; half round/flat |

Section 2: Technical Information

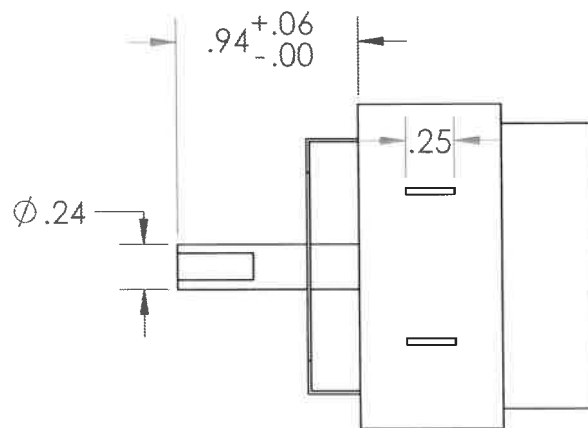
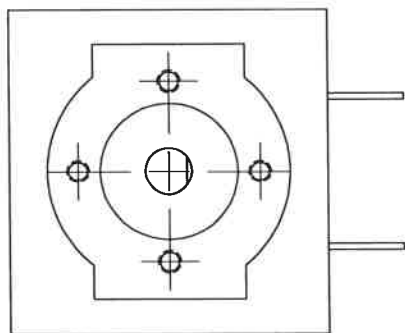
| | |
|---|--|
| Type of supplier being sought | Manufacturer |
| Reason | Re-shore |
| Describe the manufacturing processes (elaborate to provide as much detail as possible) | Includes but is not limited to etching, drilling, plating, automated placement, and soldering (electronic/electrical assembly) |
| Provide dimensions / size / tolerances / performance specifications for the item | Timer Knob; includes M4x8mm set screw Timer; 30 mins; 6 mm diameter shaft; half round/flat See attached for exact deminsions |
| List required materials needed to make the product, including materials of product components | Varied electronic components depending on implementation |
| Are there applicable certification requirements? | No |
| Are there applicable regulations? | No |
| Are there any other standards, requirements, etc.? | No |
| Additional Technical Comments | |

Section 4: Business Information

| | |
|---|--|
| Estimated potential business volume | 6000 per year |
| Estimated target price / unit cost information (if unavailable explain) | Timer Knob: \$.25 each (Asia). TBD Timer: \$1.30 each (Asia). TBD |
| When is it needed by? | ASAP |
| Describe packaging requirements | Best available. Delivered undamaged. Specifics discussed in negotiation. |
| Where will this item be shipped? | Atlanta GA |

Additional Comments

| | |
|---|--|
| Is there other information you would like to include? | |
|---|--|



6.3 and 6.3 Lead Connections
 30 Minutes w/ Bell
 250VAC 16A
 No Shaft Pin
 Half D shaft

PROPRIETARY AND CONFIDENTIAL

THE INFORMATION CONTAINED IN THIS DRAWING IS THE SOLE PROPERTY OF <COMPANY NAME>. ANY REPRODUCTION IN PART OR AS A WHOLE WITHOUT THE WRITTEN PERMISSION OF <COMPANY NAME> IS PROHIBITED.

DIMENSIONS ARE IN INCHES
 TOLERANCES:
 ANGULAR: MACH $\pm .5^\circ$ BEND $\pm 1^\circ$
 ONE PLACE DECIMAL $\pm .063$
 TWO PLACE DECIMAL $\pm .015$
 THREE PLACE DECIMAL $\pm .005$

MATERIAL
 Material <not specified>

FINISH
 ...

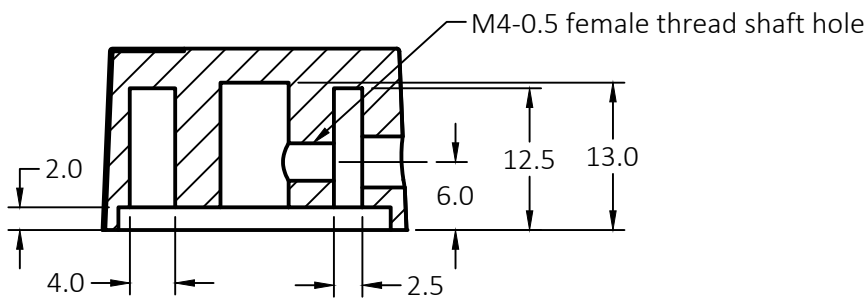
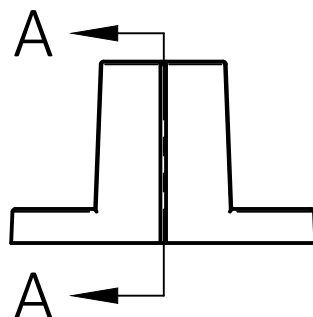
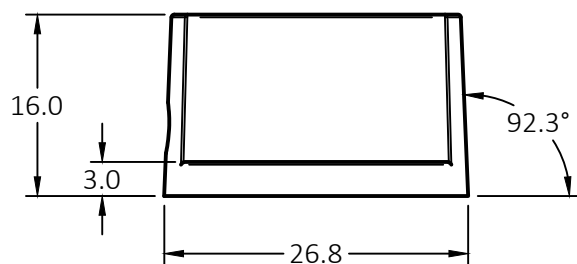
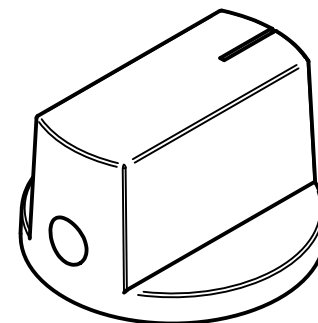
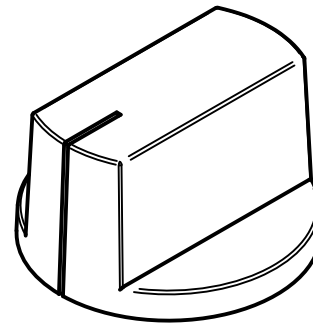
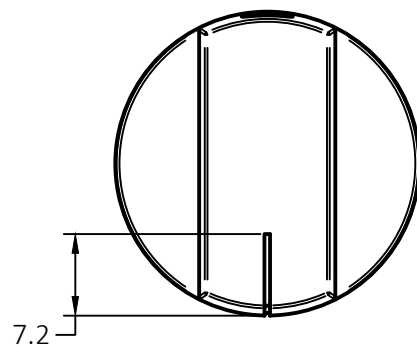
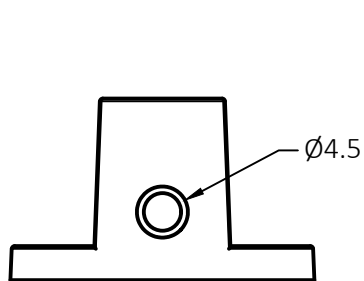
DO NOT SCALE DRAWING

| | NAME | DATE |
|-----------|------|----------|
| DRAWN | TAC | 12/9/19 |
| CHECKED | JZ | 12/11/19 |
| ENG APPR. | | |
| MFG APPR. | | |
| Q.A. | | |

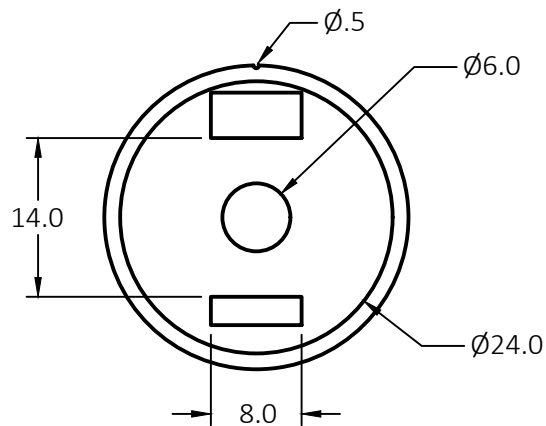
COMMENTS:

Timer; 30 minutes; 6 mm dia shaft

| SIZE | DWG. NO. | REV. |
|------------|----------------|--------------|
| A | 100203-QC | B |
| SCALE: 1:1 | WEIGHT: 48.548 | SHEET 1 OF 1 |

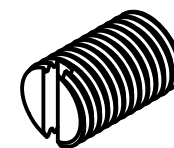


SECTION A:A



Dimensions are in mm

M4-0.5 x 8mm Flat Head set screw included



| | NAME | DATE | UNLESS OTHERWISE SPECIFIED | | | | | |
|----------|-------|-----------|--|-------------|-------------|------------|---------------------|------------|
| | | | UNIT OF MEASURE: | | INCHES | | | |
| DRAWN | | 5/23/2025 | TOLERANCES: ANGULAR: MACH $\pm 0.5^{\circ}$ BEND $\pm 1.0^{\circ}$ All angles 90° unless otherwise specified | | | PROJECT | Common | |
| CHECK | | | | | | PART | Timer Knob | |
| COLOR | BLACK | | x | ± 0.063 | ± 1.600 | DWG. NO. | | REV. |
| MATERIAL | ABS | | x.x | ± 0.020 | ± 0.508 | 100540 | | |
| | | | x.xx | ± 0.015 | ± 0.380 | | | |
| FINISH | N/A | | x.xxx | ± 0.005 | ± 0.125 | SCALE: 1:1 | APPROX. WEIGHT: N/A | SHEET: 1/1 |