

# MEPNN Supplier Scouting Opportunity Synopsis

## Section 1: General Information

Scouting Number	2025-211
Item to be Scouted	HVAC Controls - Alternates to (RIB) Functional Devices, Inc.
Days to be scouted	30
Response Due By	07/20/2025
Description	DEW Construction (GC), our trade partner (Thomas Mechanical, Inc.) and their 2nd tier HVAC controls integration contractor need assistance sourcing BABAA compliant HVAC controls components. This project is for the Burlington

## Section 2: Technical Information

Type of supplier being sought	compliant alternatives. Manufacturer
Reason	Vermont BABA
Describe the manufacturing processes (elaborate to provide as much detail as possible)	Includes but is not limited to electronic/electrical assembly, PCB fabrication and assembly, software programming, and system integration.
Provide dimensions / size / tolerances / performance specifications for the item	<ul style="list-style-type: none"><li>- (230913 I&amp;C for HVAC.pdf) See attached CSI Specification section #230913 Instrumentation and Control Devices for HVAC.</li><li>- (230923 DDC System for HVAC.pdf) Selected system components will be required to interface with the selected Direct-Digital Control System for HVAC (CSI #230923).</li><li>- (NIST Grant Award Letter to Burlington School District.pdf) Provides information on the project</li><li>- Document with "Parts List" in the title lists the component, in which, a compliant alternative / compliant alternatives is/are needed</li><li>- Additional documents provide specifications on the item(s), in which, a compliant alternative / compliant alternatives is/are needed</li></ul>
List required materials needed to make the product, including materials of product components	Unknown, this is not standard information listed in a product data submittal and has no bearing on the engineer of record's acceptance of this product. If information is necessary for sourcing, please refer to product data sheets provided.
Are there applicable certification requirements?	Yes
Certification(s) required	UL
Are there applicable regulations?	No
Are there any other standards, requirements, etc.?	No
Additional Technical Comments	<p>At this time, we do not know who will be providing the DDC system. AutomatedLogic is already in use by the Burlington School District and there is a specification requirement for this project stating, "The system shall be an extension of and integrated into, the building automation system at the Burlington Central School District."</p> <p>Systems utilizing either AutomatedLogic (client preferred) and KMC Controls have been proposed. However, neither system is fully BABAA compliant.</p>

## Section 4: Business Information

Estimated potential business volume	Please see attached Parts List. Quantity and unit prices are identified. This will be a one-time order for this project.
-------------------------------------	--

Estimated target price / unit cost information (if unavailable explain)	Please see attached Parts List. Quantity and unit prices are identified. This will be a one-time order for this project.
When is it needed by?	Immediately!!! Compliant HVAC controls are critical to the project schedule. Substantial Completion is 12 weeks away as of this submission dated 2025-06-11. No HVAC controls means no equipment startup, balancing, or commissioning.
Describe packaging requirements	Packaging is to be determined by the manufacturer such that equipment arrives undamaged.
Where will this item be shipped?	South Burlington, VT 05495

## Additional Comments

Is there other information you would like to include?	<p>Funding Agency: Department of Commerce, National Institute of Standards and Technology. Attached for reference is the grant award letter provided to Burlington High School for this project.</p> <p>DEW Construction, BABAA Contact: Michael Snyder, Cell: (802) 798-4976, Email: msnyder@dewconstruction.com</p>
---	---

**SECTION 23 0913**  
**INSTRUMENTATION AND CONTROL DEVICES FOR HVAC**

Job #	<u>10424</u>
Cost #	<u>                    </u>
Construction Set	<u>                    </u>
Received	<u>11/7/2024</u>
DEW CONSTRUCTION	

**PART 1 GENERAL**

**1.01 SECTION INCLUDES**

- A. Control panels.
- B. Control Valves:
  - 1. Ball valves with factory-mounted actuators.
  - 2. Electronic valve operators.
- C. Dampers.
- D. Damper Operators:
  - 1. Electric operators.
  - 2. Inlet vane operators.
- E. Wall-, Surface-, and Duct-Mounted Sensors:
  - 1. Temperature sensors.
  - 2. Static air pressure sensors.
- F. Thermostats:
  - 1. Room sensor with occupant override and adjustment.
  - 2. Freezestats.
  - 3. Line voltage thermostats.
  - 4. Room-mount thermostat accessories.
  - 5. Outdoor-reset thermostats.
  - 6. Airstream thermostats.
- G. Energy Metering:
  - 1. Watt-hour revenue meters (with and without demand register).
  - 2. Watt or watt-hour transducers.

**1.02 REFERENCE STANDARDS**

- A. AMCA 500-D - Laboratory Methods of Testing Dampers for Rating.
- B. ANSI C12.1 - Electric Meters - Code for Electricity Metering.
- C. ANSI C12.10 - Physical Aspects of Watthour Meters - Safety Standard.
- D. ANSI C12.20 - American National Standard for Electricity Meters - 0.2 and 0.5 Accuracy Classes.
- E. ANSI/FCI 70-2 - Control Valve Seat Leakage.
- F. ASHRAE Std 135 - A Data Communication Protocol for Building Automation and Control Networks.
- G. NEMA DC 3 - Residential Controls - Electrical Wall-Mounted Room Thermostats.

**1.03 SUBMITTALS**

- A. See Section 01 3000 - Administrative Requirements for submittal procedures.
- B. Product Data: Provide description and engineering data for each control system component. Include sizing as requested. Provide data for each system component and software module.
- C. Shop Drawings: Indicate complete operating data, system drawings, wiring diagrams, and written detailed operational description of sequences. Submit schedule of valves indicating size, flow, and pressure drop for each valve. For automatic dampers indicate arrangement, velocities, and static pressure drops for each system.
- D. Manufacturer's Instructions: Provide for all manufactured components.

- E. Operation and Maintenance Data: Include inspection period, cleaning methods, recommended cleaning materials, and calibration tolerances.
- F. Project Record Documents: Record actual location of control components, including panels, thermostats, and sensors.
  - 1. Revise shop drawings to reflect actual installation and operating sequences.
- G. Warranty: Submit manufacturer's warranty and ensure forms have been filled out in Owner's name and registered with manufacturer.

#### **1.04 QUALITY ASSURANCE**

- A. Manufacturer Qualifications: Company specializing in manufacturing the Products specified in this section with minimum three years documented experience.

#### **1.05 WARRANTY**

- A. See Section 01 7800 - Closeout Submittals for additional warranty requirements.

### **PART 2 PRODUCTS**

#### **2.01 EQUIPMENT - GENERAL**

- A. Products Requiring Electrical Connection: Listed and classified by Underwriters Laboratories Inc., as suitable for the purpose specified and indicated.

#### **2.02 CONTROL PANELS**

#### **2.03 CONTROL VALVES**

- A. Ball Valves with Factory-Mounted Actuators:
  - 1. Manufacturers:
    - a. Belimo Aircontrols (USA), Inc: [www.belimo.com/#sle](http://www.belimo.com/#sle).
    - b. Johnson Controls International, PLC: [www.johnsoncontrols.com/#sle](http://www.johnsoncontrols.com/#sle).
    - c. KMC Controls: [www.kmccontrols.com/#sle](http://www.kmccontrols.com/#sle).
  - 2. Service: Use for hot water.
  - 3. Flow Characteristic: Include 2-way operation configured to fail normally open (NO).
  - 4. Replacements in Kind: Provide pressure-independent type.
  - 5. Rangeability: 500 to 1.
  - 6. ANSI Rating: Class 150.
  - 7. Leakage: Class IV (0.1 percent of rated capacity) per ANSI/FCI 70-2.
  - 8. Body Size:
    - a. Under 2-1/2 inches:
      - 1) Connection: NPT.
      - 2) Materials:
        - (a) Body: Brass.
        - (b) Flanges: Ductile iron.
        - (c) Ball: Chrome-plated brass.
        - (d) Stem: Nickel-plated brass.
        - (e) Seat: Graphite-reinforced PTFE with EPDM O-Ring backing.
        - (f) Stem Seal: EPDM O-Rings.
        - (g) Flow Control Disk: Thermoplastic synthetic-resin.
    - b. 2-1/2 inches and Above:
      - 1) Connection Type: Flanged.
      - 2) Materials:
        - (a) Body: Brass.
        - (b) Flanges: Ductile iron.
        - (c) Ball: 300 series stainless steel.
        - (d) Stem: 300 series stainless steel.

- (e) Seat: Graphite-reinforced PTFE with EPDM O-Ring backing.
    - (f) Stem Seal: EPDM O-Rings.
    - (g) Flow Control Disk: Thermoplastic synthetic-resin.
  - c. Service Temperature:
    - 1) Fluid Side: 0 to 284 degrees F liquid or 25 psig steam.
    - 2) Ambient Side: From minus 4 to 122 degrees F.
- 9. Actuator Requirements:
  - a. Assembly: Factory-mounted.
  - b. Input: 0 to 10 VDC configured for proportional control.
  - c. Accessories: Provide with valve position indicator and manual override.
- B. Electronic Valve Actuators:
  - 1. Valves shall spring return to normal position as indicated on freeze, fire, or temperature protection.
  - 2. Select operator for full shut-off at maximum pump differential pressure.

## **2.04 DAMPERS**

- A. Frames: Galvanized steel, welded or riveted with corner reinforcement, minimum 12 gage, 0.1046 inch.
- B. Blades: Galvanized steel, maximum blade size 8 inches wide, 48 inches long, minimum 22 gage, 0.0299 inch, attached to minimum 1/2 inch shafts with set screws.
- C. Blade Seals: Synthetic elastomeric, inflatable, mechanically attached, field replaceable.
- D. Jamb Seals: Spring stainless steel.
- E. Shaft Bearings: Oil impregnated sintered bronze.
- F. Linkage Bearings: Oil impregnated sintered bronze.

## **2.05 DAMPER OPERATORS**

- A. General:
  - 1. Provide actuators with torque capacity sized for minimum of 20 percent greater than maximum design stream velocity and hold tight seal against maximum system pressures.
  - 2. Provide spring return for two position control and for fail safe operation.
  - 3. Provide sufficient number of operators to achieve unrestricted movement throughout damper range.
  - 4. Provide one operator for maximum 36 sq ft damper section.
  - 5. See Section 25 3513 for field-mount damper actuators and operators.
- B. General: Provide smooth proportional control with sufficient power for air velocities 20 percent greater than maximum design velocity and to provide tight seal against maximum system pressures. Provide spring return for two position control and for fail safe operation.
  - 1. Provide sufficient number of operators to achieve unrestricted movement throughout damper range.
- C. Electric Operators:
  - 1. Spring return, adjustable stroke motor having oil immersed gear train.
- D. Inlet Vane Operators:
  - 1. High pressure with pilot positioners and sufficient force to move vanes when fan is started with vanes in closed position. Return vane operator to closed position on fan shutdown.

## **2.06 WALL-, SURFACE-, AND DUCT-MOUNT SENSORS**

- A. Temperature Sensors:

1. Use thermistor or RTD type temperature sensing elements with characteristics resistant to moisture, vibration, and other conditions consistent with the application without affecting accuracy and life expectancy.
2. Construct RTD of nickel or platinum with base resistance of 1000 ohms at 70 degrees F.
3. 100 ohm platinum RTD is acceptable if used with project DDC controllers.
4. Temperature Sensing Device: Compatible with project DDC controllers.
5. Performance Characteristics:
  - a. Room Temperature Sensors:
    - 1) Construct for surface or wall box mounting.
    - 2) Provide the following:
      - (a) Setpoint reset slide switch with an adjustable temperature range.
      - (b) Individual heating/cooling setpoint slide switches.
      - (c) Momentary override request push button for activation of after-hours operation.
      - (d) Analog thermometer.
  - B. Static-Air Pressure Sensors:
    1. Unidirectional with ranges not exceeding 150 percent of maximum expected input.
    2. Temperature compensate with typical thermal error or 0.06 percent of full scale in temperature range of 40 to 100 degrees F.
    3. Accuracy: One percent of full scale with repeatability 0.3 percent.
    4. Output: 0 to 5 vdc with power at 12 to 28 vdc.

## 2.07 THERMOSTATS

- A. Electric Thermostats:
  1. Manufacturers:
  2. Type: NEMA DC 3, 24 volts, with setback/setup temperature control.
  3. Service: Cooling only.
  4. Covers: Locking with set point adjustment, with thermometer.
- B. Freezestats:
  1. Configuration: Vapor-filled capillary.
  2. Probe Sensing Length: 20 feet.
  3. Setpoint Adjust Control: Screw with manual reset switch.
  4. Switch Type: SPDT, snap-action, form C in dust-protected enclosure.
  5. Mounting: Locate on cooling coil intake side.
  6. Field Interface: Connect load line-voltage to starter.
  7. Electrical Rating: As indicated on drawings.
- C. Line Voltage Thermostats:
  1. Dead Band: Maximum 2 degrees F.
  2. Cover: Locking with set point adjustment, with thermometer.
  3. Rating: Motor load.
- D. Room-Mounted Thermostat Accessories:
  1. Thermostat Covers: Brushed aluminum.
  2. Insulating Bases: For thermostats located on exterior walls.
  3. Thermostat Guards: Metal mounted on separate base.
- E. Outdoor Reset Thermostats:
  1. Remote bulb or bimetal rod and tube type, proportioning action with adjustable throttling range, adjustable setpoint.
  2. Scale range: Minus 10 to 70 degrees F.
- F. Airstream Thermostats:

1. Remote bulb or bimetallic rod and tube type, proportional action with adjustable setpoint in middle of range and adjustable throttling range.
2. Averaging service remote bulb element: 7.5 feet.

## **2.08 ENERGY METERING**

- A. kW Transducers: See Section 25 3616.
- B. Power Metering and Sub-metering:
  1. Digital Register:
    - a. ANSI C12.1 and ANSI C12.20, accuracy class of 0.5 power usage (kWh) meter.
    - b. Provide meter socket in accordance with ANSI C12.10.
    - c. Current rating not to exceed two amperes, voltage not to exceed 500 V, V/A combinations not to exceed 100 V/A, life rating of one billion operations.
  2. Usage (kWh) and Demand (kW) Register:
    - a. BAS, SCADA, or other Integrated Automation Link: ASHRAE Std 135, BACnet MS/TP.

## **PART 3 EXECUTION**

### **3.01 EXAMINATION**

- A. Verify existing conditions before starting work.
- B. Verify that systems are ready to receive work.
- C. Beginning of installation means installer accepts existing conditions.
- D. Sequence work to ensure installation of components is complementary to installation of similar components in other systems.
- E. Coordinate installation of system components with installation of mechanical systems equipment such as air handling units and air terminal units.
- F. Ensure installation of components is complementary to installation of similar components.
- G. Coordinate installation of system components with installation of mechanical systems equipment such as air handling units and air terminal units.

### **3.02 INSTALLATION**

- A. Install in accordance with manufacturer's instructions.
- B. Check and verify location of [] with plans and room details before installation. Locate 60 inches above floor. Align with lighting switches.
- C. Provide conduit and electrical wiring in accordance with Section 26 0583. Electrical material and installation shall be in accordance with appropriate requirements of .

### **3.03 MAINTENANCE**

- A. Provide service and maintenance of control system for one year from Date of Substantial Completion.

**END OF SECTION**

**SECTION 23 0923**  
**DIRECT-DIGITAL CONTROL SYSTEM FOR HVAC**

Job #	10424
Cost #	
Construction Set	
Received	11/7/2024
DEW CONSTRUCTION	

**PART 1 GENERAL**

**1.01 SECTION INCLUDES**

- A. System description.
- B. Operator interface.
- C. Controllers.
- D. Power supplies and line filtering.
- E. System software.
- F. Controller software.

**1.02 RELATED REQUIREMENTS**

- A. Section 23 0913 - Instrumentation and Control Devices for HVAC.
- B. Section 23 0993 - Sequence of Operations for HVAC Controls.
- C. Section 26 0583 - Wiring Connections: Electrical characteristics and wiring connections.

**1.03 SUBMITTALS**

- A. See Section 01 3000 - Administrative Requirements for submittal procedures.
- B. Product Data: Provide data for each system component and software module.
- C. Shop Drawings:
  - 1. Indicate trunk cable schematic showing programmable control unit locations, and trunk data conductors.
  - 2. Indicate system graphics indicating monitored systems, data (connected and calculated) point addresses, and operator notations. Provide demonstration digital media containing graphics.
  - 3. Show system configuration with peripheral devices, batteries, power supplies, diagrams, modems, and interconnections.
  - 4. Indicate description and sequence of operation of operating, user, and application software.
- D. Project Record Documents: Record actual locations of control components, including control units, thermostats, and sensors.
  - 1. Revise shop drawings to reflect actual installation and operating sequences.
  - 2. Include submittals data in final "Record Documents" form.
- E. Operation and Maintenance Data:
  - 1. Include interconnection wiring diagrams complete field installed systems with identified and numbered, system components and devices.
  - 2. Include keyboard illustrations and step-by-step procedures indexed for each operator function.
  - 3. Include inspection period, cleaning methods, cleaning materials recommended, and calibration tolerances.
- F. Warranty: Submit manufacturer's warranty and ensure forms have been filled out in Owner's name and registered with manufacturer.

**1.04 QUALITY ASSURANCE**

- A. Perform work in accordance with NFPA 70.
- B. Designer Qualifications: Perform design of system using manufacturer's software under direct supervision of a Professional Engineer experienced in design of this type of work and licensed in the State in which the Project is located.



### **1.05 WARRANTY**

- A. See Section 01 7800 - Closeout Submittals for additional warranty requirements.
- B. Provide five year manufacturer's warranty for field programmable micro-processor based units.

## **PART 2 PRODUCTS**

### **2.01 MANUFACTURERS**

- A. Honeywell International, Inc: [www.honeywell.com/#sle](http://www.honeywell.com/#sle).
- B. Johnson Controls, Inc: [www.johnsoncontrols.com/#sle](http://www.johnsoncontrols.com/#sle).
- C. Schneider Electric: [www.schneider-electric.us/#sle](http://www.schneider-electric.us/#sle).
- D. Distech Controls.

### **2.02 SYSTEM DESCRIPTION**

- A. The system shall be an extension of and integrated into, the building automation system at the Burlington CSD.
- B. Automatic temperature control field monitoring and control system using field programmable micro-processor based units.
- C. Base system on distributed system of fully intelligent, stand-alone controllers, operating in a multi-tasking, multi-user environment on token passing network, with central and remote hardware, software, and interconnecting wire and conduit.
- D. Include computer software and hardware, operator input/output devices, control units, local area networks (LAN), sensors, control devices, actuators.
- E. Controls for variable air volume terminals, radiation, reheat coils, unit heaters, fan coils, and the like when directly connected to the control units. Individual terminal unit control is specified in Section 23 0913.
- F. Provide control systems consisting of thermostats, control valves, dampers and operators, indicating devices, interface equipment and other apparatus and accessories required to operate mechanical systems, and to perform functions specified.
- G. Include installation and calibration, supervision, adjustments, and fine tuning necessary for complete and fully operational system.

### **2.03 OPERATOR INTERFACE**

- A. PC Based Work Station:
- B. Workstation, controllers, and control backbone to communicate using BACnet protocol and addressing.
- C. BACnet protocol to comply with ASHRAE Std 135.
- D. Hardware:
  - 1. Laptop:
    - a. Laptop(s) to be provided by DDC controls manufacturer.
    - b. Quantity: One.
    - c. Network Connection:
      - 1) Ethernet interface card.

### **2.04 CONTROLLERS**

- A. Building Controllers:
  - 1. General:
    - a. Manage global strategies by one or more, independent, standalone, microprocessor based controllers.

- b. Provide sufficient memory to support controller's operating system, database, and programming requirements.
  - c. Share data between networked controllers.
  - d. Controller operating system manages input and output communication signals allowing distributed controllers to share real and virtual object information and allowing for central monitoring and alarms.
  - e. Utilize real-time clock for scheduling.
  - f. Continuously check processor status and memory circuits for abnormal operation.
  - g. Controller to assume predetermined failure mode and generate alarm notification upon detection of abnormal operation.
  - h. Communication with other network devices to be based on assigned protocol.
- 2. Communication:
  - a. Controller to reside on a BACnet network using ISO 8802-3 (ETHERNET) Data Link/Physical layer protocol.
  - b. Perform routing when connected to a network of custom application and application specific controllers.
  - c. Provide service communication port for connection to a portable operator's terminal or hand held device with compatible protocol.
- 3. Anticipated Environmental Ambient Conditions:
  - a. Outdoors and/or in Wet Ambient Conditions:
    - 1) Mount within waterproof enclosures.
    - 2) Rated for operation at 40 to 150 degrees F.
  - b. Conditioned Space:
    - 1) Mount within dustproof enclosures.
    - 2) Rated for operation at 32 to 120 degrees F.
- 4. Provisions for Serviceability:
  - a. Diagnostic LEDs for power, communication, and processor.
  - b. Make all wiring connections to field removable, modular terminal strips, or to a termination card connected by a ribbon cable.
- 5. Memory: In the event of a power loss, maintain all BIOS and programming information for a minimum of 72 hours.
- 6. Power and Noise Immunity:
  - a. Maintain operation at 90 to 110 percent of nominal voltage rating.
  - b. Perform orderly shutdown below 80 percent of nominal voltage.
  - c. Operation protected against electrical noise of 5 to 120 Hz and from keyed radios up to 5 W. at 3 feet.
- B. Custom Application Controller:
  - 1. General:
    - a. Provide sufficient memory to support controller's operating system, database, and programming requirements.
    - b. Share data between networked, microprocessor based controllers.
    - c. Controller operating system manages input and output communication signals allowing distributed controllers to share real and virtual object information and allowing for central monitoring and alarms.
    - d. Utilize real-time clock for scheduling.
    - e. Continuously check processor status and memory circuits for abnormal operation.
    - f. Controller to assume predetermined failure mode and generate alarm notification upon detection of abnormal operation.
    - g. Communication with other network devices to be based on assigned protocol.
  - 2. Communication:

- a. Controller to reside on a BACnet network using MS/TP Data Link/Physical layer protocol.
  - b. Provide service communication port for connection to a portable operator's terminal or hand held device with compatible protocol.
- 3. Anticipated Environmental Ambient Conditions:
  - a. Outdoors and/or in Wet Ambient Conditions:
    - 1) Mount within waterproof enclosures.
    - 2) Rated for operation at 40 to 150 degrees F.
  - b. Conditioned Space:
    - 1) Mount within dustproof enclosures.
    - 2) Rated for operation at 32 to 120 degrees F.
- 4. Provisions for Serviceability:
  - a. Diagnostic LED's for power, communication, and processor.
  - b. Make all wiring connections to field removable, modular terminal strips, or to a termination card connected by a ribbon cable.
- 5. Memory: In the event of a power loss, maintain all BIOS and programming information for a minimum of 72 hours.
- 6. Power and Noise Immunity:
  - a. Maintain operation at 90 to 110 percent of nominal voltage rating.
  - b. Perform orderly shutdown below 80 percent of nominal voltage.
  - c. Operation protected against electrical noise of 5 to 120 Hz and from keyed radios up to 5 W. at 3 feet.
- C. Application Specific Controllers:
  - 1. General:
    - a. Not fully user programmable, microprocessor based controllers dedicated to control specific equipment.
    - b. Customized for operation within the confines of equipment served.
    - c. Communication with other network devices to be based on assigned protocol.
  - 2. Communication:
    - a. Controller to reside on a BACnet network using MS/TP Data Link/Physical layer protocol.
    - b. Provide service communication port for connection to a portable operator's terminal or hand held device with compatible protocol.
  - 3. Anticipated Environmental Ambient Conditions:
    - a. Outdoors and/or in Wet Ambient Conditions:
      - 1) Mount within waterproof enclosures.
      - 2) Rated for operation at 40 to 150 degrees F.
    - b. Conditioned Space:
      - 1) Mount within dustproof enclosures.
      - 2) Rated for operation at 32 to 120 degrees F.
  - 4. Provisions for Serviceability:
    - a. Diagnostic LEDs for power, communication, and processor.
    - b. Make all wiring connections to field removable, modular terminal strips, or to a termination card connected by a ribbon cable.
  - 5. Memory: In the event of a power loss, maintain all BIOS and programming information for a minimum of 72 hours.
  - 6. Power and Noise Immunity:
    - a. Maintain operation at 90 to 110 percent of nominal voltage rating.
    - b. Perform orderly shutdown below 80 percent of nominal voltage.

- c. Operation protected against electrical noise of 5 to 120 Hz and from keyed radios up to 5 W at 3 feet.
- D. Input/Output Interface:
  - 1. Hardwired inputs and outputs tie into the DDC system through building, custom application, or application specific controllers.
  - 2. All Input/Output Points:
    - a. Protect controller from damage resulting from any point short-circuiting or grounding and from voltage up to 24 volts of any duration.
    - b. Provide universal type for building and custom application controllers where input or output is software designated as either binary or analog type with appropriate properties.
  - 3. Binary Inputs:
    - a. Allow monitoring of On/Off signals from remote devices.
    - b. Provide wetting current of 12 mA minimum, compatible with commonly available control devices and protected against the effects of contact bounce and noise.
    - c. Sense dry contact closure with power provided only by the controller.
  - 4. Pulse Accumulation Input Objects: Comply with all requirements of binary input objects and accept up to 10 pulses per second.
  - 5. Analog Inputs:
    - a. Allow for monitoring of low voltage 0 to 10 VDC, 4 to 20 mA current, or resistance signals (thermistor, RTD).
    - b. Compatible with and field configurable to commonly available sensing devices.
  - 6. Binary Outputs:
    - a. Used for On/Off operation or a pulsed low-voltage signal for pulse width modulation control.
    - b. Outputs provided with three position (On/Off/Auto) override switches.
    - c. Status lights for building and custom application controllers to be selectable for normally open or normally closed operation.
  - 7. Analog Outputs:
    - a. Monitoring signal provides a 0 to 10 VDC or a 4 to 20 mA output signal for end device control.
    - b. Provide status lights and two position (AUTO/MANUAL) switch for building and custom application controllers with manually adjustable potentiometer for manual override on building and custom application controllers.
    - c. Drift to not exceed 0.4 percent of range per year.
  - 8. Tri State Outputs:
    - a. Coordinate two binary outputs to control three point, floating type, electronic actuators without feedback.
    - b. Limit the use of three point, floating devices to the following zone and terminal unit control applications:
    - c. Control algorithms run the zone actuator to one end of its stroke once every 24 hours for verification of operator tracking.
  - 9. System Object Capacity:
    - a. System size to be expandable to twice the number of input output objects required by providing additional controllers, including associated devices and wiring.
    - b. Hardware additions or software revisions for the installed operator interfaces are not to be required for future, system expansions.

## **2.05 POWER SUPPLIES AND LINE FILTERING**

- A. Power Supplies:

1. Provide UL listed control transformers with Class 2 current limiting type or over-current protection in both primary and secondary circuits for Class 2 service as required by the NEC.
  2. Limit connected loads to 80 percent of rated capacity.
  3. Match DC power supply to current output and voltage requirements.
  4. Unit to be full wave rectifier type with output ripple of 5.0 mV maximum peak to peak.
  5. Regulation to be 1 percent combined line and load with 100 microsecond response time for 50 percent load changes.
  6. Provide over-voltage and over-current protection to withstand a 150 percent current overload for 3 seconds minimum without trip-out or failure.
  7. Operational Ambient Conditions: 32 to 120 degrees F.
  8. EM/RF meets FCC Class B and VDE 0871 for Class B and MIL-STD-810 for shock and vibration.
  9. Line voltage units UL recognized and CSA approved.
- B. Power Line Filtering:
1. Provide external or internal transient voltage and surge suppression component for all workstations and controllers.
  2. Minimum surge protection attributes:
    - a. Dielectric strength of 1000 volts minimum.
    - b. Response time of 10 nanoseconds or less.
    - c. Transverse mode noise attenuation of 65 dB or greater.
    - d. Common mode noise attenuation of 150 dB or greater at 40 to 100 Hz.

## **2.06 LOCAL AREA NETWORK (LAN)**

- A. Provide communication between control units over local area network (LAN).
- B. LAN Capacity: Not less than 60 stations or nodes.
- C. Break in Communication Path: Alarm and automatically initiate LAN reconfiguration.
- D. LAN Data Speed: Minimum 19.2 Kb.
- E. Communication Techniques: Allow interface into network by multiple operation stations and by auto-answer/auto-dial modems. Support communication over telephone lines utilizing modems.
- F. Transmission Median: Fiber optic or single pair of solid 24 gauge twisted, shielded copper cable.
- G. Network Support: Time for global point to be received by any station, shall be less than 3 seconds. Provide automatic reconfiguration if any station is added or lost. If transmission cable is cut, reconfigure two sections with no disruption to system's operation, without operator intervention.

## **2.07 SYSTEM SOFTWARE**

- A. Operating System:
  1. Concurrent, multi-tasking capability.
    - a. Common Software Applications Supported: Microsoft Excel.
  2. System Graphics:
    - a. Allow up to 10 graphic screens, simultaneously displayed for comparison and monitoring of system status.
    - b. Animation displayed by shifting image files based on object status.
    - c. Provide method for operator with password to perform the following:
      - 1) Move between, change size, and change location of graphic displays.
      - 2) Modify on-line.
      - 3) Add, delete, or change dynamic objects consisting of:
        - (a) Analog and binary values.
        - (b) Dynamic text.

- (c) Static text.
  - (d) Animation files.
- 3. Custom Graphics Generation Package:
  - a. Create, modify, and save graphic files and visio format graphics in PCX formats.
  - b. HTML graphics to support web browser compatible formats.
  - c. Capture or convert graphics from AutoCAD.
- 4. Standard HVAC Graphics Library:
  - a. HVAC Equipment:
  - b. Ancillary Equipment:
  - c. File Format Compatible with Graphics Generation Package Program.
- B. Workstation System Applications:
  - 1. Automatic System Database Save and Restore Functions:
    - a. Current database copy of each Building Controller is automatically stored on hard disk.
    - b. Automatic update occurs upon change in any system panel.
    - c. In the event of database loss in any system panel, the first workstation to detect the loss automatically restores the database for that panel unless disabled by the operator.
  - 2. Manual System Database Save and Restore Functions by Operator with Password Clearance:
    - a. Save database from any system panel.
    - b. Clear a panel database.
    - c. Initiate a download of a specified database to any system panel.
  - 3. Software provided allows system configuration and future changes or additions by operators under proper password protection.
  - 4. On-line Help:
    - a. Context-sensitive system assists operator in operation and editing.
    - b. Available for all applications.
    - c. Relevant screen data provided for particular screen display.
    - d. Additional help available via hypertext.
  - 5. Security:
    - a. Operator log-on requires user name and password to view, edit, add, or delete data.
    - b. System security selectable for each operator.
    - c. System supervisor sets passwords and security levels for all other operators.
    - d. Operator passwords to restrict functions accessible to viewing and/or changing system applications, editor, and object.
    - e. Automatic, operator log-off results from keyboard or mouse inactivity during user-adjustable, time period.
    - f. All system security data stored in encrypted format.
  - 6. System Diagnostics:
    - a. Operations Automatically Monitored:
      - 1) Workstations.
      - 2) Printers.
      - 3) Modems.
      - 4) Network connections.
      - 5) Building management panels.
      - 6) Controllers.
    - b. Device failure is annunciated to the operator.
  - 7. Alarm Processing:
    - a. All system objects are configurable to "alarm in" and "alarm out" of normal state.
    - b. Configurable Objects:
      - 1) Alarm limits.

- 2) Alarm limit differentials.
  - 3) States.
  - 4) Reactions for each object.
- 8. Alarm Messages:
  - a. Descriptor: English language.
  - b. Recognizable Features:
    - 1) Source.
    - 2) Location.
    - 3) Nature.
- 9. Configurable Alarm Reactions by Workstation and Time of Day:
  - a. Logging.
  - b. Printing.
  - c. Starting programs.
  - d. Displaying messages.
  - e. Dialing out to remote locations.
  - f. Paging.
  - g. Providing audible annunciation.
  - h. Displaying specific system graphics.
- 10. Custom Trend Logs:
  - a. Definable for any data object in the system including interval, start time, and stop time.
  - b. Trend Data:
    - 1) Sampled and stored on the building controller panel.
    - 2) Archivable on hard disk.
    - 3) Retrievable for use in reports, spreadsheets and standard database programs.
    - 4) Archival on LAN accessible storage media including hard disk, tape, Raid array drive, and virtual cloud environment.
    - 5) Protected and encrypted format to prevent manipulation, or editing of historical data and event logs.
- 11. Alarm and Event Log:
  - a. View all system alarms and change of states from any system location.
  - b. Events listed chronologically.
  - c. Operator with proper security acknowledges and clears alarms.
  - d. Alarms not cleared by operator are archived to the workstation hard disk.
- 12. Object, Property Status and Control:
  - a. Provide a method to view, edit if applicable, the status of any object and property in the system.
  - b. Status Available by the Following Methods:
    - 1) Menu.
    - 2) Graphics.
    - 3) Custom Programs.
- 13. Reports and Logs:
  - a. Reporting Package:
    - 1) Allows operator to select, modify, or create reports.
    - 2) Definable as to data content, format, interval, and date.
    - 3) Archivable to hard disk.
  - b. Real-time logs available by type or status such as alarm, lockout, normal, etc.
  - c. Stored on hard disk and readily accessible by standard software applications, including spreadsheets and word processing.
  - d. Set to be printed on operator command or specific time(s).
- 14. Reports:

- a. Standard:
    - 1) Objects with current values.
    - 2) Current alarms not locked out.
    - 3) Disabled and overridden objects, points and SNVTs.
    - 4) Objects in manual or automatic alarm lockout.
    - 5) Objects in alarm lockout currently in alarm.
    - 6) Logs:
      - (a) Alarm History.
      - (b) System messages.
      - (c) System events.
      - (d) Trends.
  - b. Custom:
    - 1) Daily.
    - 2) Weekly.
    - 3) Monthly.
    - 4) Annual.
    - 5) Time and date stamped.
    - 6) Title.
    - 7) Facility name.
  - c. Tenant Override:
    - 1) Monthly report showing total, requested, after-hours HVAC and lighting services on a daily basis for each tenant.
    - 2) Annual report showing override usage on a monthly basis.
  - d. Electrical, Fuel, and Weather:
    - 1) Electrical Meter(s):
      - (a) Monthly showing daily electrical consumption and peak electrical demand with time and date stamp for each meter.
      - (b) Annual summary showing monthly electrical consumption and peak demand with time and date stamp for each meter.
    - 2) Fuel Meter(s):
      - (a) Monthly showing daily natural gas consumption for each meter.
      - (b) Annual summary showing monthly consumption for each meter.
    - 3) Weather:
      - (a) Monthly showing minimum, maximum, average outdoor air temperature and heating/cooling degree-days for the month.
- C. Workstation Applications Editors:
- 1. Provide editing software for each system application at PC workstation.
  - 2. Downloaded application is executed at controller panel.
  - 3. Full screen editor for each application allows operator to view and change:
    - a. Configuration.
    - b. Name.
    - c. Control parameters.
    - d. Set-points.
  - 4. Scheduling:
    - a. Monthly calendar indicates schedules, holidays, and exceptions.
    - b. Allows several related objects to be scheduled and copied to other objects or dates.
    - c. Start and stop times adjustable from master schedule.
  - 5. Custom Application Programming:
    - a. Create, modify, debug, edit, compile, and download custom application programming during operation and without disruption of all other system applications.



- b. Programming Features:
  - 1) English oriented language, based on BASIC, FORTRAN, C, or PASCAL syntax allowing for free form programming.
  - 2) Alternative language graphically based using appropriate function blocks suitable for all required functions and amenable to customizing or compounding.
  - 3) Insert, add, modify, and delete custom programming code that incorporates word processing features such as cut/paste and find/replace.
  - 4) Allows the development of independently, executing, program modules designed to enable and disable other modules.
  - 5) Debugging/simulation capability that displays intermediate values and/or results including syntax/execution error messages.
  - 6) Support for conditional statements (IF/THEN/ELSE/ELSE-F) using compound Boolean (AND, OR, and NOT) and/or relations (EQUAL, LESS THAN, GREATER THAN, NOT EQUAL) comparisons.
  - 7) Support for floating-point arithmetic utilizing plus, minus, divide, times, square root operators; including absolute value; minimum/maximum value from a list of values for mathematical functions.
  - 8) Language consisting of resettable, predefined, variables representing time of day, day of the week, month of the year, date; and elapsed time in seconds, minutes, hours, and days where the variable values can be used in IF/THEN comparisons, calculations, programming statement logic, etc.
  - 9) Language having predefined variables representing status and results of the system software enables, disables, and changes the set points of the controller software.

## **2.08 CONTROLLER SOFTWARE**

- A. All applications reside and operate in the system controllers and editing of all applications occurs at the operator workstation.
- B. System Security:
  - 1. User access secured via user passwords and user names.
  - 2. Passwords restrict user to the objects, applications, and system functions as assigned by the system manager.
  - 3. User Log On/Log Off attempts are recorded.
  - 4. Automatic Log Off occurs following the last keystroke after a user defined delay time.
- C. Object or Object Group Scheduling:
  - 1. Weekly Schedules Based on Separate, Daily Schedules:
    - a. Include start, stop, optimal stop, and night economizer.
    - b. 10 events maximum per schedule.
    - c. Start/stop times adjustable for each group object.
- D. Provide standard application for equipment coordination and grouping based on function and location to be used for scheduling and other applications.
- E. Alarms:
  - 1. Binary object is set to alarm based on the operator specified state.
  - 2. Analog object to have high/low alarm limits.
  - 3. All alarming is capable of being automatically and manually disabled.
  - 4. Alarm Reporting:
    - a. Operator determines action to be taken for alarm event.
    - b. Alarms to be routed to appropriate workstation.
    - c. Reporting Options:

- F. Maintenance Management: System monitors equipment status and generates maintenance messages based upon user-designated run-time limits.
- G. Sequencing: Application software based upon specified sequences of operation in Section 23 0993.
- H. PID Control Characteristics:
  - 1. Direct or reverse action.
  - 2. Anti-windup.
  - 3. Calculated, time-varying, analog value, positions an output or stages a series of outputs.
  - 4. User selectable controlled variable, set-point, and PED gains.
- I. Staggered Start Application:
  - 1. Prevents all controlled equipment from simultaneously restarting after power outage.
  - 2. Order of equipment startup is user selectable.
- J. Energy Calculations:
  - 1. Accumulated instantaneous power or flow rates are converted to energy use data.
  - 2. Algorithm calculates a rolling average and allows window of time to be user specified in minute intervals.
  - 3. Algorithm calculates a fixed window average with a digital input signal from a utility meter defining the start of the window period that in turn synchronizes the fixed-window average with that used by the power company.
- K. Anti-Short Cycling:
  - 1. All binary output objects protected from short-cycling.
  - 2. Allows minimum on-time and off-time to be selected.
- L. On-Off Control with Differential:
  - 1. Algorithm allows binary output to be cycled based on a controlled variable and set-point.
  - 2. Algorithm to be direct-acting or reverse-acting incorporating an adjustable differential.
- M. Run-Time Totalization:
  - 1. Totalize run-times for all binary input objects.
  - 2. Provides operator with capability to assign high run-time alarm.

### **PART 3 EXECUTION**

#### **3.01 INSTALLERS**

- A. Installer List:

#### **3.02 EXAMINATION**

- A. Verify existing conditions before starting work.

#### **3.03 INSTALLATION**

- A. Install control units and other hardware in position on permanent walls where not subject to excessive vibration.
- B. Install software in control units and in operator work station. Implement all features of programs to specified requirements and appropriate to sequence of operation. Refer to Section 23 0993.
- C. Provide conduit and electrical wiring in accordance with Section 26 0583. Electrical material and installation shall be in accordance with appropriate requirements of .

#### **3.04 MANUFACTURER'S FIELD SERVICES**

- A. Start and commission systems. Allow sufficient time for start-up and commissioning prior to placing control systems in permanent operation.

- B. Provide basic operator training for up to 10 persons on data display, alarm and status descriptors, requesting data, execution of commands and request of logs. Include a minimum of 4 hours dedicated instructor time. Provide training on site.

### **3.05 DEMONSTRATION AND INSTRUCTIONS**

- A. Demonstrate complete and operating system to Owner.

### **3.06 MAINTENANCE**

- A. Provide service and maintenance of energy management and control systems for one years from Date of Substantial Completion.
- B. Provide two complete inspections, one in each season, to inspect, calibrate, and adjust controls as required, and submit written reports.
- C. Provide complete service of systems, including call backs. Make minimum of 3 complete normal inspections of approximately 3 hours duration in addition to normal service calls to inspect, calibrate, and adjust controls, and submit written reports.

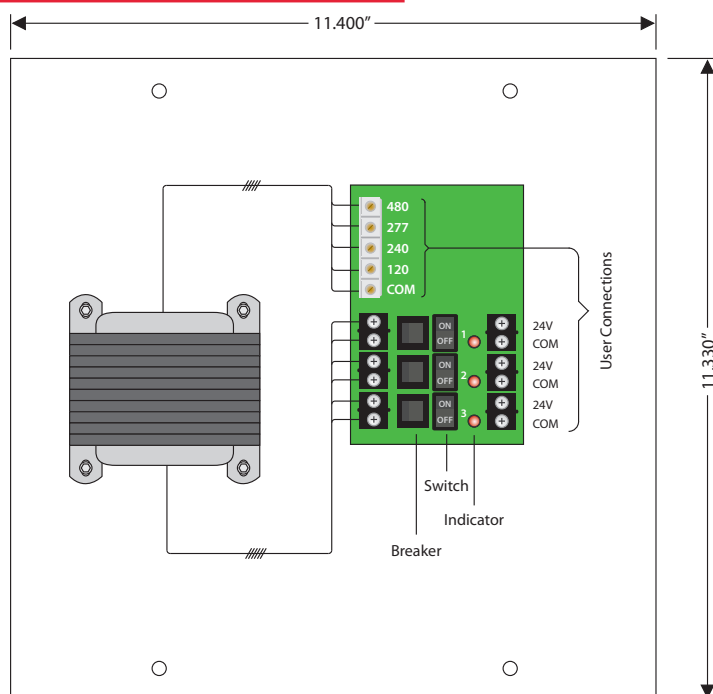
**END OF SECTION**

## PSH300A

**Enclosed** 300VA Power Supply with Three 100VA Class 2 Outputs, 480/277/240/120 Vac to 24 Vac

# PSMN300A

**Open Style** 300VA Power Supply with Three 100VA Class 2 Outputs, 480/277/240/120 Vac to 24 Vac



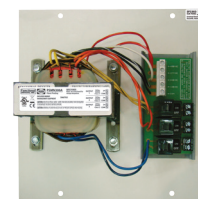
## AC Power Supply



PSH300A  
Shown  
With  
Cover



PSH300A  
Shown  
Without  
Cover



PSMN300A



## Specifications

**Transformer:** One (1) 300 VA

**Over Current Protection:** Circuit Breaker

**Primary:** 480/277/240/120 Vac

**Frequency:** 50/60 Hz

**Dimensions:** 12.125" x 12.125" x 6.000" (PSH300A)  
11.330" x 11.400" x 4.500" (PSMN300A)

**Approvals:** Class 2 (UL Approved UL5085-3),  
UL916, C-UL, CE, RoHS

**Sub-Panel:** Plenum Rated Polymetal  
Sub-Panel (PSMN300A)

**Housing:** NEMA1 Metal Enclosure (PSH300A)

**Weight:** 20.00 lbs. (PSH300A)  
11.00 lbs. (PSMN300A)

**3 Secondaries:**  
24 Vac, with LED Indicators

**24 Vac ON/OFF:**  
On / Off Switch & Breaker

**Input:**  
480/277/240/120 Vac **Finger-Safe Terminals,**  
8-18 AWG

**Output:**  
3 Isolated, Floating 100 VA Class 2 24 Vac Terminals,  
12-26 AWG

**Ambient Temperature Derating:**  
4A up to 40° C ; 3A up to 50° C ; 2A up to 55° C  
(When All 3 Outputs Operated Simultaneously)

**Notes:**

- Open style is mounted to sub-panel SP3303 for shipping and may be remounted to suit application.

**Standby Wattage:**  
16.61 W @ 120 Vac  
17.70 W @ 240 Vac  
16.26 W @ 277 Vac  
19.20 W @ 480 Vac

**Full Load Primary Current:**  
2.66 A @ 120 Vac  
1.36 A @ 240 Vac  
1.18 A @ 277 Vac  
0.68 A @ 480 Vac

**Secondary Output Voltage vs. Load:**  
 24.5 V @ 1 Amp  
 23.5 V @ 2 Amp  
 22.8 V @ 3 Amp  
 22.3 V @ 4 Amp

- With 120 Vac primary input voltage
- When all 3 outputs operated simultaneously, at room temperature

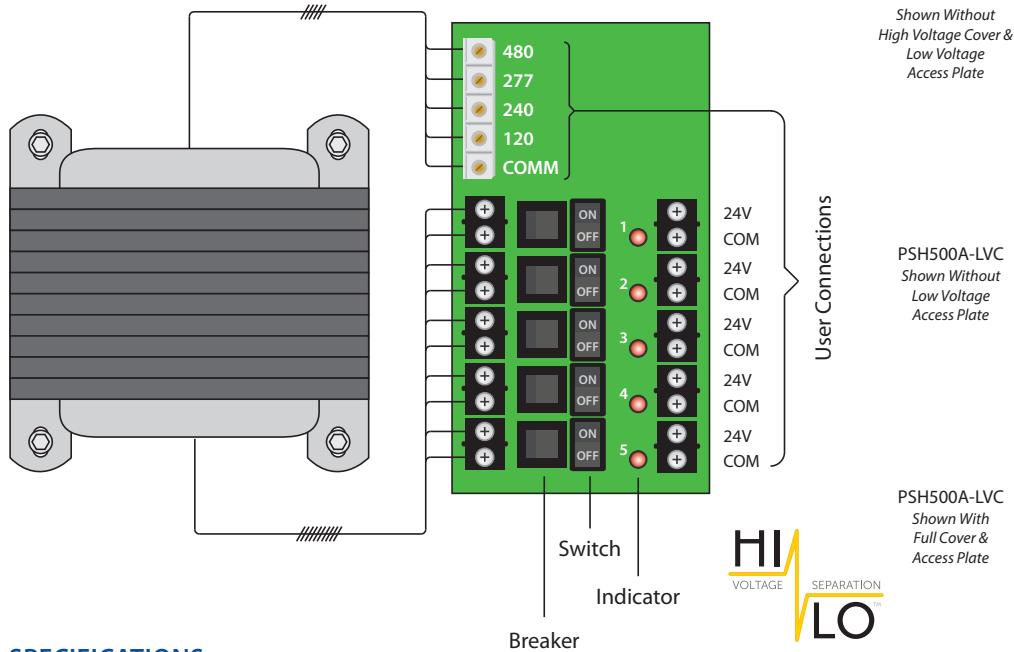
- Great for VAV Applications



## AC POWER SUPPLY

### PSH500A-LVC

Enclosed 500VA Power Supply, **High/Low Voltage Separation** with Five 100VA Class 2 Outputs, 480/277/240/120 Vac to 24 Vac



PSH500A-LVC  
Shown Without  
High Voltage Cover &  
Low Voltage  
Access Plate



PSH500A-LVC  
Shown Without  
Low Voltage  
Access Plate



PSH500A-LVC  
Shown With  
Full Cover &  
Access Plate



## SPECIFICATIONS

**Transformer:** One (1) 500 VA  
**Over Current Protection:** Circuit Breaker  
**Primary:** 480/277/240/120 Vac  
**Frequency:** 50/60 Hz  
**Dimensions:** 12.125" x 12.125" x 6.000"  
**Approvals:** Class 2 (UL Approved UL5085-3),  
 UL916, C-UL, CE, RoHS  
**Housing:** NEMA1 Metal Enclosure with  
 high/low separation

**5 Secondaries:**  
 24 Vac, with LED Indicators  
 4 Amp breaker for each output

**24 Vac ON/OFF:**  
 On / Off Switch & Breaker

**Input:**  
 480/277/240/120 Vac **Finger-Safe Terminals**, 8-18 AWG

**Output:**  
 5 Ungrounded, Isolated, 100 VA Class 2, 24 Vac Outputs.  
 Removable Terminals accept 16-22 AWG wire.

**Ambient Temperature Derating:**  
 4A up to 40° C ; 3A up to 50° C ; 2A up to 55° C  
 (When All 5 Outputs Operated Simultaneously)

**Notes:**  
 • Design is in accordance with ASCE 7-05 Chapter 13: **▲**  
[www.oshpd.ca.gov/FDD/Pre-Approval/OSP-0201-10.pdf](http://www.oshpd.ca.gov/FDD/Pre-Approval/OSP-0201-10.pdf)

**Standby Wattage:**  
 48.515 W @ 120 Vac  
 48.699 W @ 240 Vac  
 49.564 W @ 277 Vac  
 48.255 W @ 480 Vac

**Full Load Primary Current:**  
 4.66 A @ 120 Vac  
 2.41 A @ 240 Vac  
 2.06 A @ 277 Vac  
 1.17 A @ 480 Vac

**Secondary Output Voltage vs. Load:**  
 24.0 V @ 1 Amp  
 23.0 V @ 2 Amp  
 21.8 V @ 3 Amp  
 21.1 V @ 4 Amp

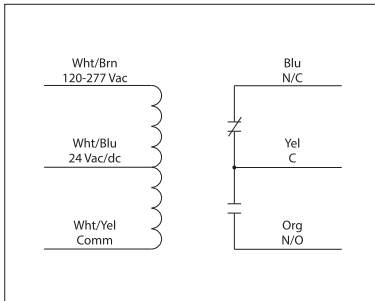
• With 240 Vac primary input voltage  
 • When all 5 outputs operated  
 simultaneously, at room  
 temperature



## 10 AMP PILOT CONTROL RELAY

### RIBD2421C

Enclosed Time Delay Relay 10 Amp SPDT with 24 Vac/dc/120-277 Vac Coil



## SPECIFICATIONS

**# Relays & Contact Type:** One (1) SPDT Continuous Duty Coil

**Expected Relay Life:** 10 million cycles minimum mechanical

**Operating Temperature:** -30 to 140° F

**Humidity Range:** 5 to 95% (noncondensing)

**Operate Time:** 6ms after time delay

**Relay Status:** RED LED On = Activated

**Time Delay Status:** PINK LED FLASHING = Timing

**Timing Mode:** Delay On Make (N/O)

**Timing Range:** 6 seconds - 20 minutes

**Timing Adjustment:** 4 position DIP switch for range selection and single turn potentiometer for timing adjustment within range

**Timing Tolerance:** Switches 1 & 2 =  $\pm 10\%$

Switches 3 & 4 =  $\pm 5\%$

**Timing Repeatability:**  $\pm 1\%$

**Temperature Timing Variance:**  $\pm 1\%$

**Voltage Timing Variance:**  $\pm 1\%$

**Recycle Time:** 750ms Maximum

**Dimensions:** 4.00" x 4.00" x 1.80" with .50" NPT nipple

**Wires:** 16", 600V Rated

**Approvals:** UL Listed, UL916, UL864, C-UL

California State Fire Marshal, CE, RoHS

**Housing Rating:** UL Accepted for Use in Plenum, NEMA 1

**Gold Flash:** No

**Override Switch:** No

### Contact Ratings:

10 Amp General Use @ 277 Vac

10 Amp Resistive @ 30 Vdc (N/O)

7 Amp Resistive @ 30 Vdc (N/C)

1/2 HP @ 125 Vac

1 HP @ 250 Vac

1/4 HP @ 277 Vac

C300 Pilot Duty

### Input Current:

66 mA @ 24 Vac

38 mA @ 24 Vdc

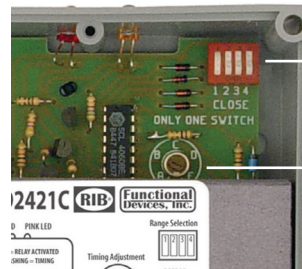
40 mA @ 120-277 Vac

### Coil Voltage Input:

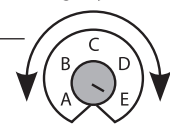
24 Vac/dc; 120-277 Vac; 50-60 Hz

Drop Out = 3 Vac / 3.8 Vdc

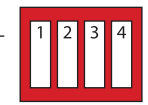
Pull In = 20 Vac / 20 Vdc



Timing Adjustment



### Range Selection



Depressed for closed

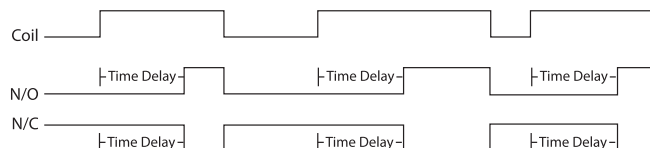
Depressed for open

Only Close 1 Switch

## TIMING TABLE

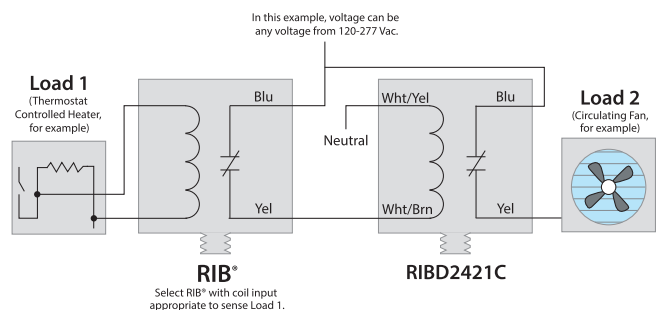
Switch Ranges	Close Dip Switch	Potentiometer Setting					
		A	B	C	D	E	
6s-20s	1	6s	9s	13s	16s	20s	
22s-1min15s	2	22s	36s	50s	1min4s	1min15s	
1min30s-5min	3	1min30s	2min10s	3min20s	4min16s	5min	
6min-20min	4	6min	9min	13min20s	17min20s	20min	

### Timing Diagram



### Time Delay Application

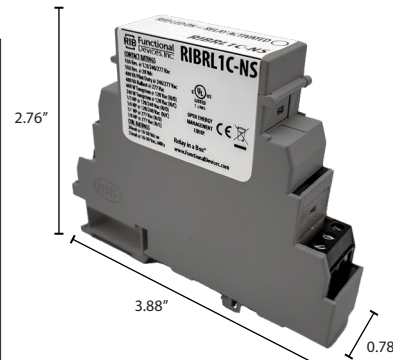
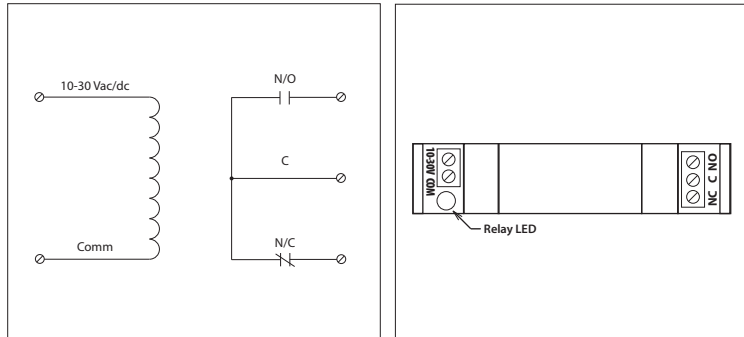
Load 2 stays on selected amount of time after Load 1 goes off.



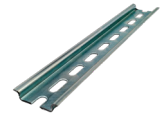
## 10 AMP PILOT CONTROL RELAY

### RIBRL1C-NS

DIN Mount No Socket Non-Pluggable Relay 10 Amp SPDT with 10-30 Vac/dc Coil



Models ADIN35 and ADIN35ES sold separately. See data sheet on website for more product information.



**ADIN35**  
DIN Rail Perforated  
35mm x 7.5mm x 1m



**ADIN35ES**  
Pair of End Stops  
for 35mm DIN Rail

## Specifications

**# Relays & Contact Type:** One (1) SPDT Continuous Duty Coil  
**Expected Relay Life:** 10 million cycles minimum mechanical  
**Operating Temperature:** -30 to 140° F  
**Humidity Range:** 5 to 95% (noncondensing)  
**Operate Time:** 20mS  
**Relay Status:** LED On = Activated  
**Dimensions:** 3.88" x 2.76" x 0.78"  
**Terminal Strip:** 14-22 AWG wire  
**Approvals:** UL Listed, UL916, C-UL, CE, RoHS  
**Gold Flash:** Yes  
**Accessories:** ADIN35, ADIN35ES

**Contact Ratings:**  
 10 Amp Resistive @ 120/240/277 Vac  
 10 Amp Resistive @ 28 Vdc  
 480 VA Pilot Duty @ 240/277 Vac  
 480 VA Ballast @ 277 Vac  
 Not rated for Electronic Ballast  
 600 Watt Tungsten @ 120 Vac (N/O)  
 240 Watt Tungsten @ 120 Vac (N/C)  
 1/3 HP @ 120/240 Vac (N/O)  
 1/6 HP @ 120/240 Vac (N/C)  
 1/4 HP @ 277 Vac (N/O)  
 1/8 HP @ 277 Vac (N/C)

**Coil Current:**  
 33 mA @ 10 Vac      13 mA @ 10 Vdc  
 35 mA @ 12 Vac      15 mA @ 12 Vdc  
 46 mA @ 24 Vac      18 mA @ 24 Vdc  
 55 mA @ 30 Vac      20 mA @ 30 Vdc

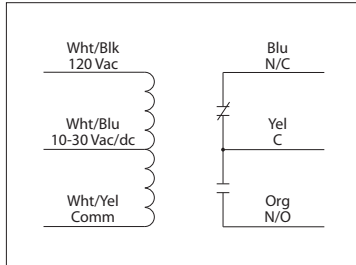
**Power and Control Voltage:**  
 10-30 Vac/dc; 50-60 Hz  
 Drop Out = 2.1 Vac / 2.8 Vdc  
 Pull In = 9 Vac / 10 Vdc



## 10 AMP PILOT CONTROL RELAY

### RIBU1C

Enclosed Relay 10 Amp SPDT with  
10-30 Vac/dc / 120 Vac Coil



**RIBU1C-RD**  
• Red housing



**RIBU1C-N4**  
• NEMA 4X housing,  
UL508 only

## SPECIFICATIONS

**# Relays & Contact Type:** One (1) SPDT Continuous Duty Coil  
**Expected Relay Life:** 10 million cycles minimum mechanical  
**Operating Temperature:** -30 to 140° F  
**Humidity Range:** 5 to 95% (noncondensing)  
**Operate Time:** 20ms  
**Relay Status:** LED On = Activated  
**Dimensions:** 1.70" x 2.80" x 1.50" with .50" NPT nipple  
**Wires:** 16", 600V Rated  
**Approvals:** UL Listed, UL916, UL864, C-UL  
 California State Fire Marshal, CE, RoHS  
**Housing Rating:** UL Accepted for Use in Plenum, NEMA 1  
**Gold Flash:** Yes  
**Override Switch:** No

**Contact Ratings:**  
 10 Amp Resistive @ 277 Vac  
 10 Amp Resistive @ 28 Vdc  
 480 VA Pilot Duty @ 240-277 Vac  
 480 VA Ballast @ 277 Vac  
*Not rated for Electronic Ballast*  
 600 Watt Tungsten @ 120 Vac (N/O)  
 240 Watt Tungsten @ 120 Vac (N/C)  
 1/3 HP @ 120-240 Vac (N/O)  
 1/6 HP @ 120-240 Vac (N/C)  
 1/4 HP @ 277 Vac (N/O)  
 1/8 HP @ 277 Vac (N/C)

**Coil Current:**  
 33 mA @ 10 Vac      13 mA @ 10 Vdc  
 35 mA @ 12 Vac      15 mA @ 12 Vdc  
 46 mA @ 24 Vac      18 mA @ 24 Vdc  
 55 mA @ 30 Vac      20 mA @ 30 Vdc  
 28 mA @ 120 Vac

**Coil Voltage Input:**  
 10-30 Vac/dc ; 120 Vac ; 50-60 Hz  
 Drop Out = 2.1 Vac / 2.8 Vdc  
 Pull In = 9 Vac / 10 Vdc



## TERMS AND CONDITIONS OF SALE

**1. OFFER, GOVERNING PROVISIONS AND CANCELLATIONS:** This document constitutes an offer or counter-offer by Functional Devices, Inc. or any of its affiliates ("Seller") to sell various products as agreed by Seller ("Products") to the buyer named on the reverse side of this document or in other applicable print or electronic documentation ("Buyer") in accordance with these terms and conditions. This writing is not an acceptance of any offer made by Buyer. This offer or counter-offer is expressly conditioned upon Buyer's assent to these terms and conditions and no others. Buyer is deemed to have assented to these terms and conditions (including Seller's warranty) when the first of the following occurs: A. Buyer signs and delivers to Seller an acknowledgement copy of any of Seller's quotation, order acknowledgement or invoice forms; B. Buyer gives to Seller (orally or in writing) specifications of quantity and/or type, assortments thereof, delivery dates, shipping instructions, instructions to bill, or the like as to all or any part of the Products; C. Buyer receives delivery of any of the Products; or D. Buyer has otherwise assented to the terms and conditions hereof.

Where an attachment to this Agreement or separate document referencing this Agreement consists of a quotation, the quotation remains open for acceptance for a period of thirty (30) days or such other period as specified in the quotation. Seller hereby rejects any additional or different terms or provisions contained in any purchase order, acknowledgment or other communication heretofore or hereafter received from Buyer. Seller's delivery of Products does not constitute an assent to any terms proposed by Buyer. Except for an officer of Seller, no representative of Seller has any authority to waive, alter, vary, amend, or add to the terms hereof. **THESE TERMS AND CONDITIONS OF SALE CONSTITUTE THE ENTIRE AGREEMENT ("AGREEMENT") BETWEEN SELLER AND BUYER WITH RESPECT TO THE MATTERS ADDRESSED HEREIN.**

**2. PRICES:** The prices for the Products are based on the terms and conditions herein, including the limitations of liability and warranties, and all such terms and conditions are material to the sale of the Products. In the event Seller fails to provide a price quote and/or terms prior to the acceptance of the order, Buyer will pay Seller's then-current list price for such Products. All quotations and invoices show the net selling price of each item quoted. In the event of a mathematical error, the quoted price per Product governs.

**3. TERMS OF PAYMENT:** Buyer will pay the fees specified in each invoice provided by Seller in United States Dollars within thirty (30) calendar days after the invoice date unless otherwise agreed to in writing by an authorized representative of Seller. Any amount due under this Agreement that remains unpaid after its due date will bear interest from the date that such payment became delinquent until the date it is paid in full at the lower of 1.5% per month, which equals an annual percentage rate of 18%, or the maximum rate permitted by law. Seller reserves the right to establish, revoke or modify credit terms for Buyer at any time. No discounts are allowed unless otherwise agreed to in writing by an authorized representative of Seller. Buyer will pay any collection fees, legal fees, or court costs incurred by Seller to collect past due amounts. No offsets or setoffs of payments due to Seller hereunder are allowed with respect to any other agreement between the parties. Seller hereby retains a lien on the goods sold for unpaid purchase money as herein provided.

**4. TAXES AND OTHER CHARGES:** In addition to the prices quoted or invoiced, Buyer will pay any sales tax, excise tax, use tax, value added or consumption tax, customs duty (that is assessed on the delivery of Product(s) to a destination outside of the U.S.A.), fee or charge of any nature whatsoever imposed by any governmental authority on or measured by the transaction between Seller and Buyer. In the event Seller is required to pay any amount, Buyer will reimburse Seller therefore; or provide Seller, at the time the order is submitted, an exemption certificate or other document acceptable to the authority imposing the same. Seller does not accept and will not pay any fines, penalties or chargebacks from Buyer for any reason.

### 5. DELIVERY, RISK OF LOSS, CLAIMS AND FORCE MAJEURE:

A. All prices quoted for products are Ex-Works (Incoterms 2010) at a shipping facility determined by Seller, unless otherwise noted by Seller ("Seller's Shipping Facility"). Risk of loss or damage, and beneficial ownership, of the Products are transferred to Buyer when the Products are made available to Buyer at Seller's Shipping Facility. All delivery dates are approximate.

B. Buyer will only make written claims to Seller for damages, shortages or other delivery errors within seven (7) calendar days after receipt of shipment. All Products received by Buyer, or Buyer's clients, customers, or agents, that are not rejected within such time will be deemed accepted. Failure to provide such written notice constitutes a waiver of all such claims regarding such shipment by Buyer. Buyer will not revoke acceptance.

C. Seller is not liable for any damage as a result of any delay or failure to deliver due to any act of God, act of Buyer, embargo or other governmental act, regulation or request, fire, accident, power outage, strike, civil unrest, weather, slowdown or other labor difficulties, war, riot, act of terrorism, delay in transportation, defaults of common carriers, inability to obtain necessary labor, materials or manufacturing facilities or, without limiting the foregoing, any other delays beyond Seller's control. Buyer's sole and exclusive remedy for any delays or for Seller's inability to deliver Products for any reason, in each case, that persists for more than ninety (90) days, is to cancel the order pursuant to Seller's Order Policies and Guidelines available upon request.

**6. WARRANTY; DISCLAIMER.** Products are warranted to be free from manufacturing defects under normal use and conditions for five (5) years (the "Warranty Period").

The warranty does not apply to: (a) Damage caused by accident, abuse, mishandling, or dropping; (b) Products which have been subjected to unauthorized repair, opened, or taken apart; (c) Products not used in accordance with directions; (d) Damages exceeding the cost of such Product; and (e) Damages caused by lightning, water, or condensation. If warranty service is required during the Warranty Period, and if examination shall disclose to Seller's satisfaction

that such Product was originally defective, then Seller will at its option repair or replace the product without charge upon prepaid delivery of such Product to Seller's facility with proof of date of purchase. Corrections of such defects by repair to or supplying of replacements for defective parts shall constitute fulfillment of all obligations of Seller.

Seller shall not be liable for loss, damage, or expense directly or indirectly caused from the failure of Products to perform as expected.

EXCEPT AS SET FORTH HEREIN, SELLER DISCLAIMS ALL REPRESENTATIONS OR WARRANTIES OF ANY KIND WHATSOEVER, WHETHER EXPRESS, IMPLIED OR STATUTORY, INCLUDING, WITHOUT LIMITATION, ANY IMPLIED WARRANTIES OF MERCHANTABILITY, NON-INFRINGEMENT, FITNESS FOR A PARTICULAR PURPOSE OR ANY WARRANTY ARISING FROM A COURSE OF DEALING OR USAGE OF TRADE. NO PERSON (INCLUDING ANY AGENT, DEALER OR REPRESENTATIVE OF SELLER) IS AUTHORIZED TO MAKE ANY REPRESENTATION OR WARRANTY CONCERNING PRODUCTS EXCEPT TO REFER BUYER TO THIS AGREEMENT. BUYER WARRANTS THAT BUYER HAS NOT RELIED ON ANY OTHER WARRANTIES OR REPRESENTATIONS CONCERNING THE PRODUCTS OR THIS AGREEMENT.

For warranty service, call factory for RA number and send such Product prepared with sales receipt to: FUNCTIONAL DEVICES, INC., 101 COMMERCE DRIVE, SHARPSVILLE, IN 46068.

**7. LIMITATION OF LIABILITY: SELLER WILL NOT BE LIABLE FOR ANY LOSS OF PROFIT, INTERRUPTION OF BUSINESS OR ANY OTHER SPECIAL, CONSEQUENTIAL OR INCIDENTAL DAMAGES SUFFERED OR SUSTAINED BY BUYER FOR ANY REASON. EXCEPT FOR CLAIMS OF DEATH OR PERSONAL INJURY, IN NO EVENT WILL SELLER'S AGGREGATE LIABILITY TO BUYER ARISING UNDER OR IN ANY WAY RELATED TO THIS AGREEMENT FOR ANY REASON (INCLUDING, BUT NOT LIMITED TO, LIABILITY ARISING FROM NEGLIGENCE OR ON THE BASIS OF STRICT LIABILITY, OR OTHERWISE) EXCEED THE TOTAL AMOUNT PAID BY BUYER TO SELLER HEREUNDER FOR ANY PRODUCT GIVING RISE TO A CLAIM UNDER THIS AGREEMENT.**

**8. RETURNS:** Unless otherwise approved by Seller in writing in its sole discretion, except in the case of a non-conforming shipment or a warranty issue, Buyer may not return Products. If Seller approves the return of Products pursuant to the preceding sentence, such returned Products must be returned within ninety (90) days from date of invoice and will be subject to a 25% restocking fee. In the event of a non-conforming shipment or a warranty issue, Buyer may return Products, but only if Buyer first: (a) provides notice to Seller as required in this Agreement, (b) obtains prior authorization from Seller, and (c) all Products or containers for which return is properly authorized have been marked with a return authorization number supplied by Seller. Buyer will make all returns via a traceable form such as Federal Express, UPS or insured mail and in resalable condition. Buyer will pay all return shipping charges and any other charges associated therewith.

**9. CANCELLATIONS:** Cancellation or deferment of all or part of an order is subject to acceptance by the Seller. If accepted, any reduction in quantity of any item to less than 85% of the original item quantity is subject to a 15% cancellation charge. If an order cancellation is accepted, the Buyer will make delivery and pay for all material manufactured and in stock or in process at time of notice for such order, and for any special materials on orders for which the Seller must take delivery.

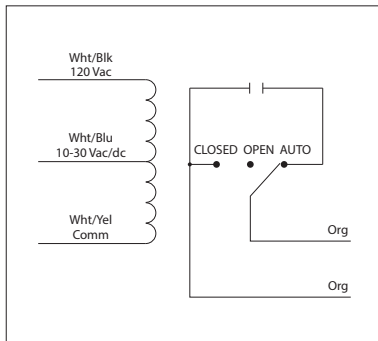
**10. EXPORTS.** Buyer agrees that it will comply with any and all U.S. Export Controls and will not pay for, resell, transfer or knowingly sell Products in violation of U.S. Export Controls. If Buyer resells Products within or exports Products to a country or region which imposes upon Seller and/or Buyer an obligation to fund or undertake reuse, recycling, composting, recovery of Products, or any similar obligation (e.g., the European Union's Waste Electrical and Electronic Equipment Directive, EC 2002/96/EC) (the "Obligations"), Buyer shall wholly undertake the Obligations or duties and shall be entirely responsible for all associated costs therewith. Seller shall have no obligation to reimburse Buyer for execution of the Obligations. In the event that Seller is named in a proceeding based upon the Obligations, Buyer shall indemnify, defend and hold Seller harmless from all actions related thereto, including all civil and governmental actions.

**11. MISCELLANEOUS.** This Agreement is governed by the laws of the State of Indiana, without giving effect to its conflict of laws principles. Buyer hereby irrevocably consents and submits to the exclusive jurisdiction and venue of the state and federal courts in Marion County, Indiana. The United Nations Convention for Contracts for the International Sale of Goods is explicitly excluded. Each provision contained in this Agreement constitutes a separate and distinct provision severable from all other provisions. If any provision (or any part thereof) is unenforceable under or prohibited by any present or future law, then such provision (or part thereof) will be amended, and is hereby amended, so as to be in compliance with such law, while preserving to the maximum extent possible the intent of the original provision. Any provision (or part thereof) that cannot be so amended will be severed from this Agreement; and, all the remaining provisions of this Agreement will remain unimpaired. No modification, addition or deletion, or waiver of any rights under this Agreement is binding on a party unless made in a non-preprinted agreement clearly understood by the parties to be a modification or waiver, and signed by a duly authorized representative of each party.

## 10 AMP PILOT CONTROL RELAYS

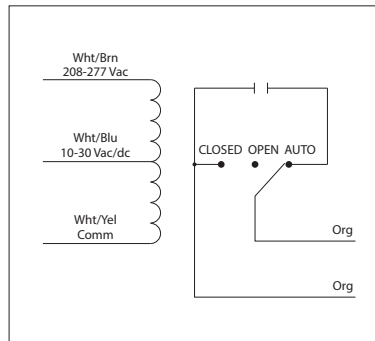
### RIBU1S

Enclosed Relay 10 Amp SPST-N/O + Override with  
10-30 Vac/dc/120 Vac Coil



### RIBH1S

Enclosed Relay 10 Amp SPST-N/O + Override with  
10-30 Vac/dc/208-277 Vac Coil



RELAYS

## SPECIFICATIONS

**# Relays & Contact Type:** One (1) SPST Continuous Duty Coil  
**Expected Relay Life:** 10 million cycles minimum mechanical  
**Operating Temperature:** -30 to 140° F  
**Humidity Range:** 5 to 95% (noncondensing)  
**Operate Time:** 20ms  
**Relay Status:** LED On = Activated  
**Dimensions:** 2.30" x 3.20" x 1.80" with .50" NPT nipple  
**Wires:** 16", 600V Rated  
**Approvals:** UL Listed, UL916, UL864, C-UL California State Fire Marshal  
**Housing Rating:** UL Accepted for Use in Plenum, NEMA 1  
**Gold Flash:** Yes  
**Override Switch:** Yes

**Contact Ratings:**  
 10 Amp Resistive @ 277 Vac  
 480 VA Pilot Duty @ 277 Vac  
 480 VA Ballast @ 277 Vac  
*Not rated for Electronic Ballast*  
 600 Watt Tungsten @ 120 Vac (N/O)  
 240 Watt Tungsten @ 120 Vac (N/C)  
 1/3 HP @ 120-240 Vac (N/O)  
 1/6 HP @ 120-240 Vac (N/C)  
 1/4 HP @ 277 Vac (N/O)  
 1/8 HP @ 277 Vac (N/C)

**Coil Voltage Input:**  
 10-30 Vac/dc ; 120 Vac ; 50-60 Hz (RIBU1S)  
 10-30 Vac/dc ; 208-277 Vac ; 50-60 Hz (RIBH1S)  
 Drop Out = 2.1 Vac / 2.8 Vdc  
 Pull In = 9 Vac / 10 Vdc

**Coil Current:**  
 33 mA @ 10 Vac      13 mA @ 10 Vdc  
 35 mA @ 12 Vac      15 mA @ 12 Vdc  
 46 mA @ 24 Vac      18 mA @ 24 Vdc  
 55 mA @ 30 Vac      20 mA @ 30 Vdc  
 28 mA @ 120 Vac (RIBU1S)  
 39 mA @ 208-277 Vac (RIBH1S)

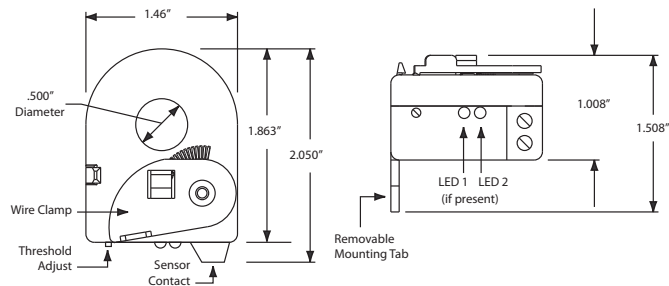
**Notes:**  
 • Order Normally Closed by adding "-NC" to end of model number



## AC CURRENT SWITCHES

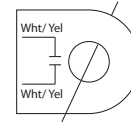
### RIBXK Series

Enclosed Self-Powered Solid Core AC Sensors



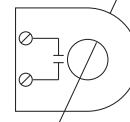
RIBXKA

Wire Being Monitored



RIBXKTF

Wire Being Monitored



CURRENT  
SENSORS

## SPECIFICATIONS

### FUNCTIONAL DEVICES CERTIFIED FOR USE WITH ECMs

**Operating Temperature:** -30 to 140° F

**Humidity Range:** 5 to 95% (noncondensing)

**Max Sense Voltage:** 600 Vac

**Approvals:** UL Listed, UL916, UL864, C-UL, California State Fire Marshal

**Mounting/Installation:** Removable mounting tab provided. The wire clamp locks against the wire being monitored, securing the unit in place.

**Sensor Contact Output:** Current below threshold: Open ; Current above threshold: Closed

#### Sensor Contact:

- Solid State Contact
- When sensor contact is off (open), leakage <30 uA @ 30Vac/dc
- When sensor contact is on (closed), voltage drop < .3 Vac/dc @ .1 Amp  
< 1.6 Vac/dc @ .4 Amp

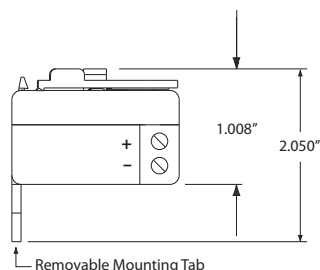
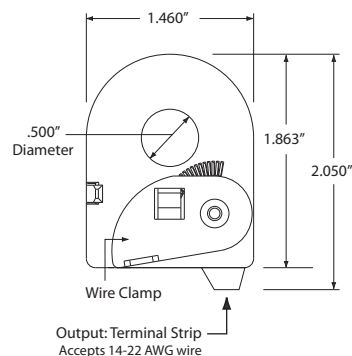
## RIBXK SERIES SELECTION GUIDE

Model#	Sensing Range	Type	Threshold	Sensor Contact Type	Switching Voltage Range	Maximum Switching Current	Sensor Contact Termination	LED 1	LED 2
RIBXKF	.25-150 Amp	Solid Core	Fixed, .25 Amp	Solid State Switch SPST	30 Vac/dc	.4 Amps Max	Wht/Yel 16" 18 AWG Wire Leads		
RIBXKTF	.25-150 Amp	Solid Core	Fixed, .25 Amp	Solid State Switch SPST	30 Vac/dc	.4 Amps Max	Terminal Strip, Accepts #14-22 AWG Wire		
RIBXKA	.50-150 Amp	Solid Core	Adjustable	Solid State Switch SPST	30 Vac/dc	.8 Amps Max	Wht/Yel 16" 18 AWG Wire Leads	Over Trip Point	Under Trip Point
RIBXKTA	.50-150 Amp	Solid Core	Adjustable	Solid State Switch SPST	30 Vac/dc	.8 Amps Max	Terminal Strip, Accepts #14-22 AWG Wire	Over Trip Point	Under Trip Point

## AC TRANSDUCERS

### RIBXKTV Series

Enclosed Self-Powered Solid Core Current to DC Transducers



## SPECIFICATIONS

**Operating Temperature:** -30 to 140° F

**Humidity Range:** 5 to 95% (noncondensing)

**Accuracy:** 96.8% Full Scale

**Loading:** RIBXKTV5-10, 1% Error @ 180 kΩ

RIBXKTV5-20, 1% Error @ 90 kΩ

RIBXKTV5-50, 1% Error @ 40 kΩ

RIBXKTV5-100, 1% Error @ 15 kΩ

**Max Sense Voltage:** 600 Vac

**Approvals:** UL Listed, UL916, UL864, California State Fire Marshal, C-UL, CE, RoHS

**Mounting/Installation:** Removable mounting tab provided. The wire clamp locks against the wire being monitored, securing the unit in place.

**Sensor Type:** Solid core with voltage output

### RIBXKTV SERIES SELECTION GUIDE

Model#	Sensing Range	Sensor Output
RIBXKTV5-10	0-10 Amp	0-5 Vdc (Terminal Strip, Accepts #14-22 AWG Wire)
RIBXKTV5-20	0-20 Amp	0-5 Vdc (Terminal Strip, Accepts #14-22 AWG Wire)
RIBXKTV5-50	0-50 Amp	0-5 Vdc (Terminal Strip, Accepts #14-22 AWG Wire)
RIBXKTV5-100	0-100 Amp	0-5 Vdc (Terminal Strip, Accepts #14-22 AWG Wire)

HVAC Controls - BABAA Non-Compliant Components Current through 2025-06-11						
Manufacturer	Part #	Description		Qty	Item Value	Total Value
Functional Devices, Inc.	PSH500a	500 va transformer		5	\$ 435.00	\$ 2,175.00
Functional Devices, Inc.	Ribd2421c	Time delay relay		7	\$ 49.00	\$ 343.00
Functional Devices, Inc.	RIBU1S	10 AMP SPST NO W/OVERRIDE 10-30VAC/DC, 120VAC ENCLOSED RELAY		49	\$ 26.54	\$ 1,300.46
Functional Devices, Inc.	RIBXKTF	25-150 AMP FIXED SOLID CORE 30VAC/DC SWITCH SPST		35	\$ 17.16	\$ 600.60
Functional Devices, Inc.	PSH300A	Enclosed 300VA Power Supply, 3x100VAC Circuits		1	\$ 450.00	\$ 450.00
Functional Devices, Inc.	PSH500A	Enclosed 500VA Power Supply, 5x100VAC Circuits		2	\$ 618.00	\$ 1,236.00
Functional Devices, Inc.	RIBRL1C-NS	DIN Mount No Socket Non-Pluggable Relay 10 Amp SPDT with 10-30 Vac/DC Coil		4	\$ 26.00	\$ 104.00
Functional Devices, Inc.	RIBU1C	Enclosed Relay 10 Amp SPDT with 10-30 Vac/DC/120 Vac Coil		24	\$ 21.00	\$ 504.00
Functional Devices, Inc.	RIBU1S	Enclosed Relay 10 Amp SPDT-N/O + Override with 10-30 Vac/DC/120 Vac Coil		2	\$ 44.00	\$ 88.00
Functional Devices, Inc.	RIBXKTV5-20	Enclosed Self-Powered Solid Core Current to DC Transducers		27	\$ 36.00	\$ 972.00

**FINANCIAL ASSISTANCE AWARD****FEDERAL AWARD ID NUMBER**

60NANB23D159

**RECIPIENT NAME**

Burlington School District

**PERIOD OF PERFORMANCE**

09/01/2023 - 08/31/2026

**STREET ADDRESS**

150 Colchester Ave

**FEDERAL SHARE OF COST**

\$9,900,000.00

**CITY, STATE ZIP**

Burlington, VT 05401-1422

**RECIPIENT SHARE-OF COST**

\$0.00

**AUTHORITY**

Consolidated Appropriations Act, 2022

**TOTAL ESTIMATED COST**

\$9,900,000.00

**CFDA NO. AND NAME**

11.617 Congressionally-Identified Projects

**PROJECT TITLE:**

Burlington Aviation Technology Center Facility

This Award Document (Form CD-450) signed by the Grants Officer constitutes an obligation of Federal funding. By signing this Form CD-450, the Recipient agrees to comply with the Award provisions checked below and attached. Upon acceptance by the Recipient, the Form CD-450 must be signed by an authorized representative of the Recipient and returned to the Grants Officer. If not signed and returned without modifications by the Recipient within 30 days of receipt, the Grants Officer may unilaterally withdraw this Award offer and de-obligate the funds.

☒ DEPARTMENT OF COMMERCE FINANCIAL ASSISTANCE STANDARD TERMS AND CONDITIONS

R &amp; D AWARD

FEDERAL-WIDE RESEARCH TERMS AND CONDITIONS, AS ADOPTED BY THE DEPT. OF COMMERCE

☒ SPECIFIC AWARD CONDITIONS

☒ LINE ITEM BUDGET

☒ 2 CFR PART 200, UNIFORM ADMINISTRATIVE REQUIREMENTS, COST PRINCIPLES, AND AUDIT REQUIREMENTS, AS ADOPTED PURSUANT TO 2 CFR § 1327.101

48 CFR PART 31, CONTRACT COST PRINCIPLES AND PROCEDURES

MULTI-YEAR AWARD. PLEASE SEE THE MULTI-YEAR SPECIFIC AWARD CONDITION.

☒ OTHER(S): U.S. DEPARTMENT OF COMMERCE, NATIONAL INSTITUTE OF STANDARDS AND TECHNOLOGY  
STANDARD TERMS AND CONDITIONS FOR EXTRAMURAL CONSTRUCTION PROJECTS, MAY 11, 2023

SIGNATURE OF DEPARTMENT OF COMMERCE GRANTS OFFICER

SHIOU YUN LIU

Digitally signed by SHIOU YUN  
LIU  
Date: 2023.09.15 08:23:32 -04'00'

Shiou Liu

DATE

PRINTED NAME, PRINTED TITLE, AND SIGNATURE OF AUTHORIZED RECIPIENT OFFICIAL

Tom Flanagan, Superintendent



DATE

9/18/23

Award Number: 60NANB23D159, Amendment Number 0

Federal Program Officer: Robert Slocum

Requisition Number: 195161

Employer Identification Number: 471351664

UEI Number: VCCSKXGSMEJ5

Recipient ID: 1155128

Requestor ID: 1155128

**Award ACCS Information**

Bureau	FCFY	Project-Task	Organization	Object Class	Obligation Amount
57	2023	1959000-000	10-19-0195-00-00-00-00	41-98-00-00	\$9,900,000.00

**Award Contact Information**

Contact Type	Contact Name	Email	Phone
Administrative	Mr. Barry Gruessner	bgruessn@bsdvt.org	8028648462

**NIST Grants Officer:**

Shiou Liu  
100 Bureau Drive, MS 1650  
Gaithersburg, MD 20899-1650  
(301) 975-8245

**NIST Grants Specialist:**

LaShae Green  
100 Bureau Drive, MS 1650  
Gaithersburg, MD 20899-1650  
(301) 975-3070



**NATIONAL INSTITUTE OF STANDARDS AND TECHNOLOGY  
2022 CONGRESSIONALLY IDENTIFIED CONSTRUCTION GRANT PROGRAM  
FINANCIAL ASSISTANCE  
SPECIFIC AWARD CONDITIONS**

---

**1. Description of Work:**

The National Institute of Standards and Technology (NIST) hereby enters into this grant number 60NANB23D159 with Burlington School District to support the work described in the proposal entitled “Burlington Aviation Technology Center Facility” dated November 17, 2022, and any revisions received during the application review, which are hereby incorporated into this award by reference.

The scope of work for this project is anticipated to provide a total building space in the range of 30,000 to 45,000 gross SF to include classrooms, offices, shops/tech areas, storage, hangar space and general building facilities with the intent to educate up to 150 high school students and adults each year with the technical center housing aviation for 11<sup>th</sup> and 12<sup>th</sup> graders as well as adult programs that finishes the airframe and powerplant training.

Work will be completed in accordance with the schedule submitted by Burlington School District in the Project Management and Schedule dated November 17, 2022.

The Burlington School District shall diligently pursue the development of the project to ensure completion within this time schedule and shall promptly notify NIST in writing of any event that could substantially delay meeting any of the prescribed time limits for the project as set forth above. The Burlington School District further acknowledges that failure to meet the development time schedule may result in NIST taking action to suspend or terminate the Award in accordance with the regulations set forth at 2 CFR § 200.339.

Where the terms of this award and the proposal differ, the terms of this award shall prevail.

**2. Recipient Contact Information:**

**Administrative:**

Barry Gruessner  
Grants Director  
Burlington School District  
150 Colchester Avenue  
Burlington, VT 05401-1422  
Telephone: 802-864-8462  
Email: [bgruessn@bsdvt.org](mailto:bgruessn@bsdvt.org)



NIST Financial Assistance Award Number: 60NANB23D159

Amendment: NEW

Recipient: Burlington School District

**Authorized Representative:**

Tom Flanagan  
Superintendent  
Burlington School District  
150 Colchester Avenue  
Burlington, VT 05401-1422  
Telephone: 802-865-5332  
Email: [tflanagan@bsdvt.org](mailto:tflanagan@bsdvt.org)

**3. NIST Award Contact Information:**

**Grants Officer:**

Michelle Shiouyun Liu  
National Institute of Standards and Technology  
100 Bureau Drive, Mail Stop 1650  
Gaithersburg, MD 20899-1650  
Telephone: 301-975-8245  
Email: [shiouyun.liu@nist.gov](mailto:shiouyun.liu@nist.gov)

**Grants Specialist:**

LaShae Green  
National Institute of Standards and Technology  
100 Bureau Drive, Mail Stop 1650  
Gaithersburg, MD 20899-1650  
Telephone: 301-975-3070  
Email: [lashae.green@nist.gov](mailto:lashae.green@nist.gov)

**Federal Program Officer:**

Robert Slocum  
National Institute of Standards and Technology  
100 Bureau Drive  
Gaithersburg, MD 20899  
Email: [robert.slocum@nist.gov](mailto:robert.slocum@nist.gov)

**4. Award Payments:**

This award is hereby funded through advanced payments using the Department of Treasury's Automated Standard Application for Payments (ASAP) system. Payments will be issued in accordance with 2 CFR § 200.305 and the Department of Commerce Financial Assistance Standard Terms and Conditions, B.02, dated November 12, 2020.

Payments for allowable costs may be drawn down as needed by the Recipient enrolled in ASAP. Funds may be requested through ASAP by the authorized *Payment Requestor* who is the individual designated by the Recipient to access Federal funds.

NIST Financial Assistance Award Number: 60NANB23D159

Amendment: NEW

Recipient: Burlington School District

This award has the following control or withdrawal limits set in ASAP:

- ☐ None
- ☐ Agency Review required for all withdrawals (see explanation below)
- ☐ Agency Review required for all withdrawal requests over  
\$ \_\_\_\_\_ (see explanation below)
- ☒ Maximum Draw Amount controls (see explanation below)
  - \$ \_\_\_\_\_ each month
  - \$ \_\_\_\_\_ each quarter
  - \$0.00 \_\_\_\_\_ Max drawdown amount

**Explanation:**

**Environmental & Historic Compliance Requirements**

A total of \$9,900,000.00 in Federal funding is hereby withheld until the requirements identified in Specific Award Condition (SAC) #17 Environmental and Historic Review is satisfied. A Six-Month Expenditure Plan may be submitted to request funding for expenditures limited to Environmental and Historic Requirement compliance as identified in SAC #17.

In addition, the final site selection for the Burlington Aviation Technology Center Facility must be provided to NIST and approved by NIST prior to advertisement of construction. All federal funding is hereby withheld until this requirement is satisfied, as identified in SAC #19 Final Site Selection, below.

**5. Return Payments for Funds Withdrawn through ASAP:**

Funds that have been withdrawn through ASAP may be returned to ASAP via the Automated Clearing House (ACH) or via FEDWIRE. The ACH or FEDWIRE transaction may only be completed by the Recipient's financial institution. Full or partial amounts of payments received by a Payment Requestor/Recipient Organization may be returned to ASAP. All funds returned to the ASAP system will be credited to the ASAP Suspense Account. The Suspense Account allows the Regional Financial Center to monitor returned items and ensure that funds are properly credited to the correct ASAP account. Returned funds that cannot be identified and classified to an ASAP account will be dishonored and returned to the originating depository financial institution (ODFI). The Payment Requestor/Recipient Organization should notify the NIST Grants Office and provide a reason whenever return payments are made.

It is essential that the Payment Requestor/Recipient Organization provide its financial institution with ASAP account information (ALC, Recipient ID and Account ID) to which the return is to be credited. Additional detailed information is accessible at:  
<https://www.fiscal.treasury.gov/asap/>.

**6. Period of Performance and Funding Limitations:**

NIST Financial Assistance Award Number: 60NANB23D159

Amendment: NEW

Recipient: Burlington School District

The period of performance and budget incorporated into this award cover a 3-year period of performance and provide for a maximum total amount of \$9,900,000.00 in Federal funding. This award is being fully funded via this award action.

The maximum amount of NIST funding in support of this award will not exceed the amount specified in the award documents, unless otherwise amended in writing by the NIST Grants Officer. The Department of Commerce is not liable for any obligations, expenditures, or commitments which involve any amount in excess of the Federal funds being made available pursuant to this award.

**7. Request for Application - 2022 Congressionally Identified Construction Grant Program:**

The Department of Commerce, National Institute of Standards and Technology Request for Application (RFA) No. 2022-NIST-RFA-CICGP-01, dated October 18, 2022, is incorporated by reference into this award. It is accessible at:

<https://www.grants.gov/web/grants/view-opportunity.html?oppId=344108>

**8. Department of Commerce Pre-Award Notification Requirements for Grants and Cooperative Agreements:**

The Department of Commerce Pre-Award Notification Requirements for Grants and Cooperative Agreements as published in the *Federal Register* on December 30, 2014 (79 FR 78390) is incorporated by reference into this award. It is accessible at:

<http://www.gpo.gov/fdsys/pkg/FR-2014-12-30/pdf/2014-30297.pdf>.

**9. Uniform Administrative Requirements, Cost Principles and Audit Requirements**

Through 2 C.F.R. § 1327.101, the Department of Commerce adopted Uniform Administrative Requirements, Cost Principles, and Audit Requirements for Federal Awards at 2 C.F.R. Part 200, which apply to awards in this program. Refer to <http://go.usa.gov/SBYh> and <http://go.usa.gov/SBg4>. Awards issued pursuant to this program may be subject to specific award conditions as authorized by 2 C.F.R. § 200.208.

**10. Deviation to the Department of Commerce Financial Assistance Standard Terms and Conditions, Section A.01 "Reporting Requirements":**

The Recipient must submit a Federal Financial Report (SF-425) and Performance Progress Report on a quarterly basis for the periods ending March 31, June 30, September 30, and December 31, or any portion thereof.

Reports are due no later than 30 calendar days following the end of each reporting period. A final SF-425 and Performance Progress Report must be submitted within 120 days after the expiration of the period of performance.

All SF-425 and Performance Progress Reports must be submitted to: [GReports@nist.gov](mailto:GReports@nist.gov), within the prescribed timeframes identified in the terms and conditions of the award.

The Recipient organization name, NIST award number, and reporting period must be included in the email subject line. The Recipient contact information should be included in the body of the message. To the greatest extent possible, SF-425 and Performance Progress Reports should be submitted together in the same email.

SF-425 and Performance Progress Reports must not be sent directly to NIST personnel (e.g. Grants Specialist, Grants Officer, Administrative Assistant, GMD Division Chief, Federal Program Officer, etc.).

Any SF-425 or Performance Progress Reports sent directly to NIST personnel will be returned to the sender with instructions on how to submit through the [GReports@nist.gov](mailto:GReports@nist.gov) mailbox.

No other correspondence may be sent through this mailbox; timely responses to any other inquiries received in this mailbox are not guaranteed. The mailbox will not be used for any other purpose except for purposes identified above.

**11. Department of Commerce Financial Assistance Standard Terms and Conditions:**

As indicated on the Form CD-450 for this award, the Department of Commerce Financial Assistance Standard Terms and Conditions (ST&C) issued November 12, 2020, are incorporated by reference into this award. The Department's ST&C, as well as a link to 2 CFR Part 200, are accessible at: <https://www.commerce.gov/oam/policy/financial-assistance-policy>.

**12. NIST Standard Terms and Conditions for Extramural Construction Projects:**

As indicated on the Form CD-450 for this award, the National Institute of Standards and Technology Standard Terms and Conditions for Extramural Construction Projects (Construction ST&Cs) dated May 11, 2023 are incorporated by reference into this award. The Construction ST&Cs are accessible at [NIST Standard Terms and Conditions for Extramural Construction Projects | NIST](#).

**13. Unfunded Grant Actions Mailbox (UGAM):**

Requests for unfunded award actions, which include, but are not limited to, requests for no-cost extension, change in key personnel, change in scope of work, and budget revisions must be submitted to: [UGAM@nist.gov](mailto:UGAM@nist.gov), within the prescribed timeframes identified in the terms and conditions of the award.

NIST Financial Assistance Award Number: 60NANB23D159

Amendment: NEW

Recipient: Burlington School District

Unfunded award action requests and related correspondence, including justification to support the request, sent to the mailbox must contain the following information in the email subject line: (1) Recipient name; (2) NIST award number; (3) Principal Investigator/Project Director; and (4) Action being requested (e.g. no cost extension, change in key personnel, etc.).

Unfunded award action requests must not be sent directly to NIST personnel (e.g. Grants Specialist, Grants Officer, Administrative Assistant, GMD Director, Federal Program Officer, etc.).

Any requests sent directly to NIST personnel will be returned to the sender with instructions on how to submit through the UGAM@nist.gov mailbox.

No other correspondence may be sent through this mailbox; timely responses to any other inquiries received in this mailbox are not guaranteed. The mailbox will not be used for any other purpose except for purposes identified above.

Requests that are processed will be authorized via a Form CD-451 Amendment to the Financial Assistance Award or a Non-Funded Administrative Change Letter.

**14. Supervision of the Recipient's Staff and Associates and Compliance with NIST Policies on Use of Federal Facilities and Equipment:**

Consistent with Department of Commerce Financial Assistance Standard Terms and Conditions, Section A.05, nothing in this award will be construed as authorizing the Recipient or its employees, agents, or assigns to act as an agent or assign of NIST, and the Recipient must exercise all diligence to ensure that no third party construes the Recipient as an actual, ostensible, or apparent agent of NIST. For purposes of this award, the use of the term "personnel" herein includes all third parties, such as contractors, subrecipients, students, fellows, or others participating under the direction of the Recipient's programs. The Recipient acknowledges that it is independent of NIST in the performance of the approved projects, and that the Recipient assumes full and sole responsibility for all benefits and protections of the Recipient's personnel and agents whose services are utilized by the Recipient in the execution of this award.

Accordingly, the Recipient must control the means and manner of its personnel's activities on the project, including those conducted on a NIST campus, on Recipient property, and at other locations for the project. The Recipient must directly provide a salary, stipend, or other funding to the personnel, and must establish the work schedule and tenure for the personnel. The Recipient is the supervisor of record for the personnel and will coordinate with NIST as needed to ensure that the research remains consistent with NIST program objectives.

**15. Estimated Useful Life:**

The estimated useful life of the building renovation portion of this project is 15 years from when the date on which the Certificate of Occupancy for the renovations is issued.

**16. Property Trust Relationship and Public Notice Filings for Grant-Acquired Property:**

In accordance with 2 CFR § 200.316 (Property trust relationship), real property, equipment, and intangible property, that are acquired or improved with a Federal award must be held in trust by the non-Federal entity (*i.e.*, Recipient or Subrecipient) as trustee for the beneficiaries of the project or program under which the property was acquired or improved. This trust relationship exists throughout the duration of the property's estimated useful life, as determined by the Grants Officer in consultation with the Program Office, during which time the Federal Government retains an undivided, equitable reversionary interest in the property (Federal Interest). The non-Federal entity must comply with all use and disposition requirements and restrictions as set forth in 2 C.F.R. §§ 200.310 (Insurance coverage) through 200.316 (Property trust relationship), as applicable, and in the terms and conditions of the Federal award.

The Grants Officer may require a non-Federal entity (*i.e.*, a Recipient or Subrecipient) to execute and to record (as applicable) a statement of interest, financing statement (Form UCC-1), lien, mortgage or other public notice of record to indicate that real or personal property acquired or improved in whole or in part pursuant to this award is subject to the Federal Interest, and that certain use and disposition requirements apply to the property. The statement of interest, financing statement (Form UCC-1), lien, mortgage or other public notice must be acceptable in form and substance to the NIST Grants Officer and must be placed on record in accordance with applicable State and local law, with continuances re-filed as appropriate. In such cases, the NIST Grants Officer may further require the non-Federal entity to provide a written statement from a licensed attorney in the jurisdiction where the property is located, certifying that the Federal Interest has been protected, as required under the award and in accordance with applicable State and local law. The attorney's statement, along with a copy of the instrument reflecting the recordation of the Federal Interest, must be promptly returned to the Grants Officer.

Without releasing or excusing the non-Federal entity from these obligations, the non-Federal entity, by execution of the financial assistance award or by expending Federal financial assistance funds (in the case of a subrecipient), authorizes the NIST Grants Officer to file such notices and continuations as it determines to be necessary or convenient to disclose and protect the Federal Interest in the property. The NIST Grants Officer may elect not to release any or a portion of the Federal award funds until the non-Federal entity has complied with this provision and any other applicable award terms or conditions, unless other arrangements satisfactory to the NIST Grants Officer are made.

**17. Environmental and Historic Review:**



NIST Financial Assistance Award Number: 60NANB23D159

Amendment: NEW

Recipient: Burlington School District

The Recipient must comply with all applicable requirements, environmental and historic preservation laws, Executive Orders, regulations, standards, and guidance, and identify to NIST any impact a project may have on the environment or historic resources.

**Project implementation may not begin prior to the completion of a review of potential environmental impacts, per the National Environmental Policy Act of 1969 (42 U.S.C. 4321, et. seq.) (NEPA) and Section 106 of the National Historic Preservation Act of 1966 (16 U.S.C. § 470, et. seq.).**

The completion of NEPA compliance activities will result in one of the following: a Categorical Exclusion, an Environmental Assessment/Finding of No Significant Impact (EA/FONSI), or an Environmental Impact Statement. A decision document will not be issued until all required consultations, including, Section 7 of the Endangered Species Act (16 U.S.C. §1531, et. seq.), and any other required consultations are complete. The Recipient must also address compliance with all other applicable federal, state, and local environmental laws and regulations.

Under Section 106 of the NHPA, federal agencies, and by extension recipients of federal grant funds, must evaluate the potential effects of any proposed projects (“undertakings”) on properties listed on, or eligible for listing on, the National Register of Historic Places. Grant recipients are encouraged to initiate Section 106 consultation with relevant State Historic Preservation Offices (SHPOs) or, in the case of institutions located on tribal lands, the proper Tribal Historic Preservation Office (THPO) as directed by NIST. NIST will remain involved in resolution in the event of an adverse effect determination.

**A Environmental and Historic Review, to include any required consultations under NEPA and Section 106 of the NHPA, must be completed no later than six months after the award start date; unless a formal request for extension is submitted and approved by the Grants Officer. The Recipient must comply with all conditions placed on the project as the result of the consultation processes. The Recipient may not expend any federal grant funds, except as authorized by the Grants Officer pursuant to approval of the 6-month expenditure plan (discussed below).**

The Recipient is required to provide the following information that will enable NIST to make a preliminary determination regarding the potential impact of the proposed project on environmental and historic resources:

1. A thorough description of all proposed project activities, particularly buildings and other capital improvement activities that will be conducted. Include: (i) the area and extent of earthwork (drilling, excavation, fill, blasting, dredging, etc.), (ii) environmental communication, documentation, or permitting (planned, pending, or in place), (iii) any determination upon the project by any department of environment or other agency or office, (iv) floodplain mapping on the site itself or any adjacent or contiguous property, (v) any special interest in the project or the site, (vi) any public meetings planned or held regarding the on the site itself or adjacent or contiguous property, (vii) any threatened or

endangered species or any migratory birds or bald or golden eagles on the site itself or adjacent or contiguous property, or (viii) any essential fish habitat or any portion of the National Wild and Scenic River System or Coastal Barrier System or navigable waters on the site itself or adjacent or contiguous property, (ix) any waters of any stream or other body of water “proposed or authorized, permitted or licensed to be impounded, diverted, or otherwise controlled or modified”, (x) any identified or potential wetland on the site itself or any adjacent or contiguous property, (xi) any hazardous or regulated substances or Superfund activity on the site itself or adjacent or contiguous property, and/or (xii) any invasive species on the site itself or adjacent or contiguous property.

2. Maps of the project area and ground-level and aerial photographs with installation/renovation locations clearly marked on the buildings impacted. Free online resources, such as Google maps or similar images, are acceptable.

3. For the list of buildings, referenced in Item #1, state the year those buildings were first constructed as well as the dates of any subsequent major renovations. For buildings that are 45 years old or older, provide photos of installation sites, as well as exterior and interior photos of the building. Provide any property relevant to this application which is (i) within the viewshed of a registered historic property or (ii) within a historic district or (iii) registered as historic itself or (iv) noted to be historically or architecturally significant in any study or article of public interest. Provide any communication, documentation, or permitting under the project, e.g., determination upon the project by a SHPO and/or THPO.

**NOTE: The Recipient must submit a draft Environmental and Historic Review with all initial required project information listed above in Items #1 – #3 to NIST via UGAM@nist.gov no later than 60 calendar days after award start date, unless an extension has been requested in writing by the Recipient and approved by the Grants Officer.**

Follow-on information may be required for NIST to determine the level of impacts of the project on environmental and historic resources. If consultation is required, grantees are encouraged to initiate consultation as referenced above and must provide NIST with relevant documentation of the consultation process. Once appropriate and applicable consultations have been completed, and environmental review documentation has been completed, NIST will review all documentation and determine whether the review sufficiently addresses all resource areas and whether the project may qualify for an approval decision.

Once the above information is provided, NIST will review and provide guidance on the next steps that the recipient should take regarding required consultations and/or environmental and historic preservation documentation required to make environmental determinations. Next steps may include, but are not limited to, the submittal and completion of the following:



1. The completion of any required consultations as described above where applicable and directed by NIST, to include consultations with the SHPO and/or THPO and the appropriate federally-recognized Native American tribes (if applicable), under Section 106 of the NHPA, and/or consultations with the USFWS under Section 7 of the ESA;
2. The completion of environmental review and issuance by NIST of a decision document, as described above, that meets the requirements of NEPA; and
3. Compliance with all other applicable federal, state, and local environmental laws and regulations.

The Recipient is required to provide any information requested by NIST in a timely and effective manner to ensure both initial and ongoing compliance with environmental and historic preservation laws, regulations, and best practices. All such information must be sent to the FPO.

The Recipient shall notify NIST within 24 hours upon receipt of any notices of foreclosure; notices for continuing consultation received from the SHPO, THPO or other consulting party; or notices of noncompliance received from consulting authorities or regulatory agencies. These notices shall be sent to the FPO. Projects which, after consultation with appropriate agencies, are determined to be ineligible for a CE will require the development of an EA/FONSI. The Recipient may wish to coordinate with NIST to rescope or descope the proposed project to avoid or minimize impacts to environmental and historic resources.

Any change to the approved project scope, resulting from consultations or for other reasons, that have the potential for altering the nature or extent of environmental or cultural resources impacts must immediately be brought to the attention of NIST and will be re-evaluated for compliance with applicable regulatory requirements.

For all ground disturbing activities in the vicinity of known archaeological sites or suspected or known burials, the Recipient must ensure that an archaeologist who meets the Secretary of the Interior's Professional Qualification Standards monitors ground disturbance, and if any potential archeological resources or buried human remains are discovered, then the Recipient must immediately cease construction in that area and notify NIST and the interested SHPO, THPO, and tribes. Such construction activities may then only continue with the written approval of NIST.

#### **6-Month Expenditure Plan**

While this SAC is in effect, the Recipient shall submit, in advance of any program fund drawdowns from ASAP.gov, a 6-month expenditure plan that presents the proposed expenditure of award funds prior to the completion of the environmental review process, including any preliminary procurement activities. The NEPA Coordinator and the Federal

Preservation Officer will review the plan and provide recommendations to the Federal Program Officer and the Grants Officer for final approval to ensure that the proposed activities and expenditures are reasonable and necessary in the context of environmental and historical compliance. Approval of the Grants Officer is required prior to fund drawdowns of the 6-Month Expenditure Plan through ASAP.gov.

The allowable use of funds for preliminary expenditures prior to beginning project implementation includes, but is not limited to, the initiation of activities necessary to meet the project completion requirements as specified in the award including environmental and historic preservation requirements:

1. Required environmental and historic preservation consultation activities;
2. Purchase or lease of equipment, or entering into binding contracts to do so; and
3. Purchase of applicable or conditional insurance.

The allowable use of preliminary expenditure funds is limited; must not result in an irrevocable commitment of resources; and is only allowed after inclusion in and approval of a 6-month expenditure plan.

#### **18. Signage and Public Acknowledgement Requirements:**

a. Signs - The Recipient is encouraged to include project signage, satisfactory in form and content to NIST, that identifies the nature of the project and indicates that “the project is funded by the Consolidated Appropriations Act, 2022.” In addition, guidelines for project signage, including an emblem and corresponding logomark, is available in the Official Investing in America Emblem Style Guide: <https://www.whitehouse.gov/wp-content/uploads/2023/02/Investing-in-America-Brand-Guide.pdf>. Costs associated with signage must be reasonable and limited. The Recipient is encouraged to use recycled or recovered materials when procuring signs. Signs should not be produced or displayed if doing so results in unreasonable cost, expense, or recipient burden. Any construction site sign should be displayed throughout the construction phase of the project in an easily visible location directly linked to the work taking place. The Recipient is responsible to maintain the sign in good condition throughout the construction period.

b. Plaque - Any plaque installed at the discretion of the Recipient, citing the origins or history of the project, should identify the project as a “project funded by Consolidated Appropriations Act, 2022.”

c. Communications - Any banner or other message intended for public display on the project site should remain within the spirit of transparency and public information provided herein.

#### **19. Final Site Selection:**

NIST Financial Assistance Award Number: 60NANB23D159

Amendment: NEW

Recipient: Burlington School District

Within 60 calendar days of the award start date, the Recipient must provide to the Federal Program Officer and Grants Specialist identified in this award, a final site selection for the Burlington Aviation Technology Center Facility. The site selection must be approved by NIST prior to advertisement of construction. All grant funding will be withheld until this Specific Award Condition is deemed satisfied in writing by the NIST Grants Officer.

---

**End of Specific Award Conditions**

### BUDGET INFORMATION - Construction Programs

**NOTE:** Certain Federal assistance programs require additional computations to arrive at the Federal share of project costs eligible for participation. If such is the case, you will be notified.

COST CLASSIFICATION	a. Total Cost	b. Costs Not Allowable for Participation	c. Total Allowable Costs (Columns a-b)
1. Administrative and legal expenses	\$ <input type="text"/>	\$ <input type="text"/>	\$ <input type="text"/>
2. Land, structures, rights-of-way, appraisals, etc.	\$ <input type="text"/>	\$ <input type="text"/>	\$ <input type="text"/>
3. Relocation expenses and payments	\$ <input type="text"/>	\$ <input type="text"/>	\$ <input type="text"/>
4. Architectural and engineering fees	\$ <input type="text" value="947,427.00"/>	\$ <input type="text" value="547,427.00"/>	\$ <input type="text" value="400,000.00"/>
5. Other architectural and engineering fees	\$ <input type="text" value="50,000.00"/>	\$ <input type="text"/>	\$ <input type="text" value="50,000.00"/>
6. Project inspection fees	\$ <input type="text" value="600,000.00"/>	\$ <input type="text"/>	\$ <input type="text" value="600,000.00"/>
7. Site work	\$ <input type="text" value="7,050,000.00"/>	\$ <input type="text"/>	\$ <input type="text" value="7,050,000.00"/>
8. Demolition and removal	\$ <input type="text"/>	\$ <input type="text"/>	\$ <input type="text"/>
9. Construction	\$ <input type="text"/>	\$ <input type="text"/>	\$ <input type="text"/>
10. Equipment	\$ <input type="text"/>	\$ <input type="text"/>	\$ <input type="text"/>
11. Miscellaneous	\$ <input type="text"/>	\$ <input type="text"/>	\$ <input type="text"/>
12. SUBTOTAL (sum of lines 1-11)	\$ <input type="text" value="8,647,427.00"/>	\$ <input type="text" value="547,427.00"/>	\$ <input type="text" value="8,100,000.00"/>
13. Contingencies	\$ <input type="text" value="1,800,000.00"/>	\$ <input type="text"/>	\$ <input type="text" value="1,800,000.00"/>
14. SUBTOTAL	\$ <input type="text" value="10,447,427.00"/>	\$ <input type="text" value="547,427.00"/>	\$ <input type="text" value="9,900,000.00"/>
15. Project (program) income	\$ <input type="text"/>	\$ <input type="text"/>	\$ <input type="text"/>
16. TOTAL PROJECT COSTS (subtract #15 from #14)	\$ <input type="text" value="10,447,427.00"/>	\$ <input type="text" value="547,427.00"/>	\$ <input type="text" value="9,900,000.00"/>
<b>FEDERAL FUNDING</b>			
17. Federal assistance requested, calculate as follows: (Consult Federal agency for Federal percentage share.) Enter the resulting Federal share.			Enter eligible costs from line 16c Multiply X <input type="text" value="100"/> % \$ <input type="text" value="9,900,000.00"/>

