

# MEPNN Supplier Scouting Opportunity Synopsis

## Section 1: General Information

Scouting Number	2025-163
Item to be Scouted	Thermolysis Skids
Days to be scouted	30
Response Due By	06/07/2025
Description	It is mainly a mechanical assembly of vessels, pipes, screws, valves, gates, Insulation Instruments

## Section 2: Technical Information

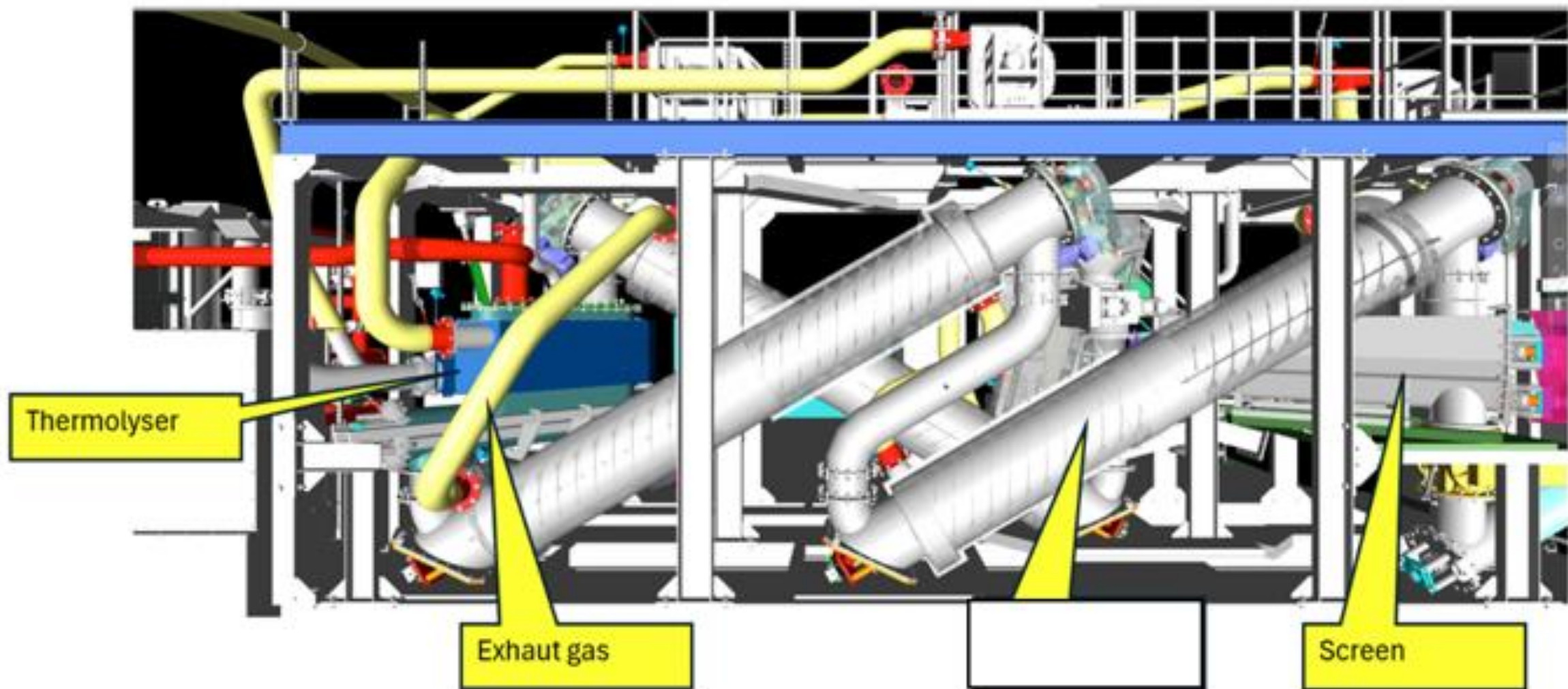
Type of supplier being sought	Manufacturer
Reason	Re-shore
Describe the manufacturing processes (elaborate to provide as much detail as possible)	It is mainly a mechanical assembly of vessels, pipes, screws, valves, gates, Insulation Instruments Cabling
Provide dimensions / size / tolerances / performance specifications for the item	Dimension skid approx : 45x6x15feet (H)
List required materials needed to make the product, including materials of product components	Steel, Stainless Steel 304, Alloys
Are there applicable certification requirements?	Yes
Certification(s) required	ISO ,UL
Details	American Society for Testing and Materials (ASTM), American Society of Mechanical Engineers (ASME)
Are there applicable regulations?	No
Are there any other standards, requirements, etc.?	No
Additional Technical Comments	The partner may have to work on scale-up of these units Our industrial strategy is based on several modules, meaning that the skid described above is one of 3 units we need to process biomass and produce syngas

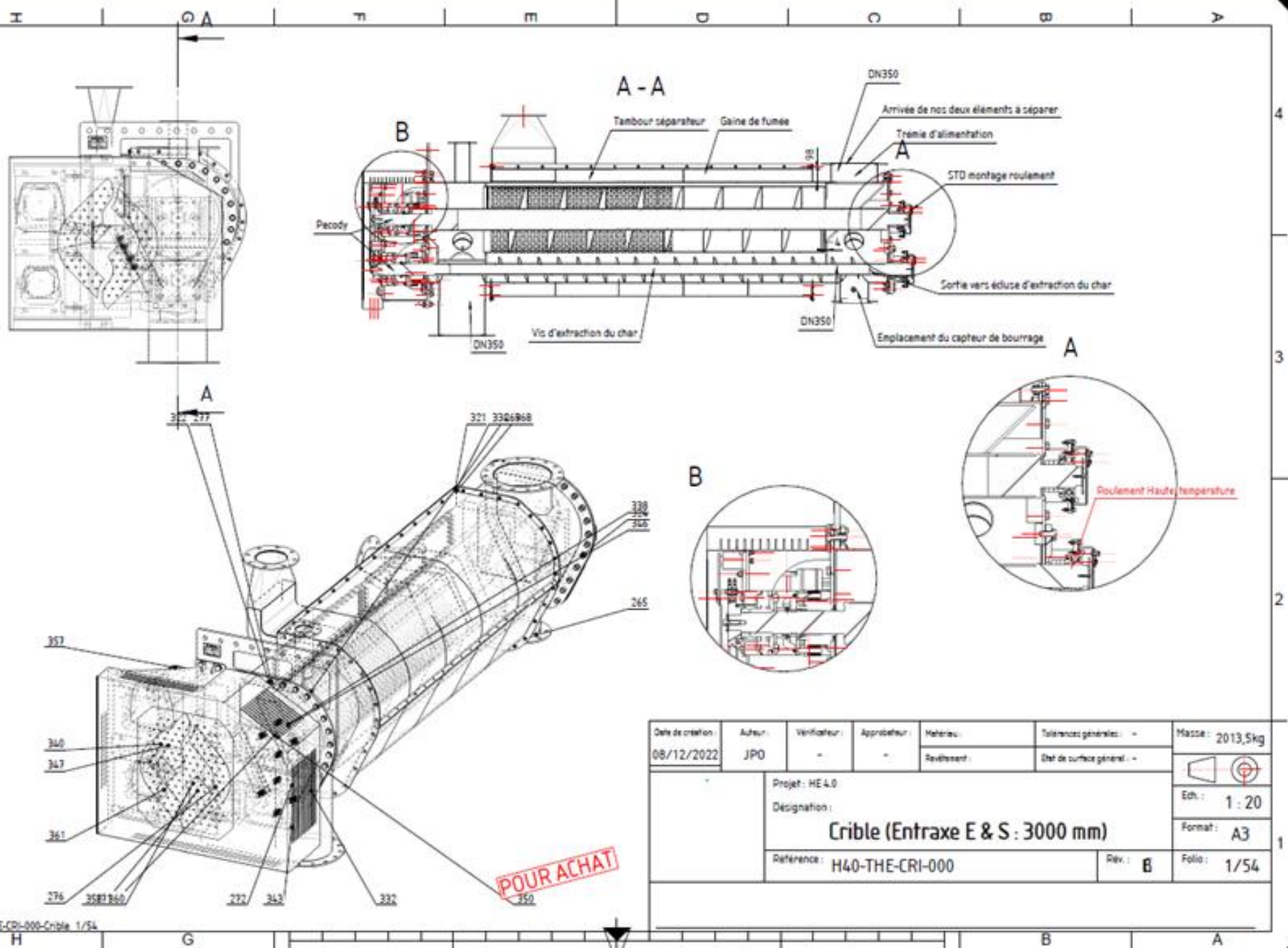
## Section 4: Business Information

Estimated potential business volume	Immediate needs is one small unit Working on several projects (ex 20 units 50x times bigger), for which we will need this type of skids and additional treatment (reformer, gasifier, scrubbers, catalytic reactors)
Estimated target price / unit cost information (if unavailable explain)	Small skid 500k\$
When is it needed by?	12/31/2025
Describe packaging requirements	To be shipped to destination by flat bed truck
Where will this item be shipped?	To be determined

# Additional Comments

Is there other information you would like to include?	Manufacturing time to be discussed with partner These units have been designed and manufactured in France. Our roadmap is based on US based manufacturing of our standard modules. Partner will need to "americanize" the units (metric to US, connections (mechanical & electrical), standard US sizes..)
---	--





Date de création 08/12/2022	Auteur JPO	Vérificateur -	Approbateur -	Matériau -	Tolérances générales : -	Masse : 2013,5kg
				Revêtement -	État de surface général : -	
Projet : HE4.0						Edt. : 1 : 20
Designation :						Format : A3
Reference : H40-THE-CRI-000						Folio : 1/54
Rev. : B						

La nomenclature Achat du Crible							
REP.	QTE	DESIGNATION	REFERENCE	MATIERE	Type de production	Fabricant	MASSE
23	2	Joint graphite - DN125 PN10-16		FS3	Achéhé	FITEX	0,0kg
265	1	Collet embouti DN200			Achéhé	Bene Inox	0,8kg
269	77	Ecrou hexagonal (Style 2) ISO 4033 - M20	NF ISO 4033	Acier zingué blanc (HE)	Achéhé		0,1kg
271	2	Palier			Achéhé	SNR	14,9kg
272	2	PE PECODY			Achéhé	Laffy	23,4kg
276	124	Rondelle plate (Normal) ISO 7089 - 16	NF ISO 7089	Acier zingué blanc (HE)	Achéhé		0,0kg
277	151	Rondelle plate (Normal) ISO 7089 - 20	NF ISO 7089	Acier zingué blanc (HE)	Achéhé		0,0kg
321	168	Rondelle plate (Normal) ISO 7089 - 10	NF ISO 7089	Acier zingué blanc (HE)	Achéhé		0,0kg
322	25	Vis à tête Hexagonale ISO 4017 - M20 x 65	NF ISO 4017	Steel	Achéhé		0,2kg
324	18	Vis à tête Hexagonale ISO 4017 - M20 x 55	NF ISO 4017	Steel	Achéhé		0,2kg
327	48	Vis à tête Hexagonale ISO 4017 - M16 x 30	NF ISO 4017	Steel	Achéhé		0,1kg
331	16	Rondelle plate (Normal) ISO 7089 - 12	NF ISO 7089	Acier zingué blanc (HE)	Achéhé		0,0kg
332	18	Vis à tête Hexagonale ISO 4017 - M20 x 80	NF ISO 4017	Steel	Achéhé		0,3kg
333	2	Vis à tête cylindrique à six pans creux - M10 x 45	NF ISO 4762	Acier zingué blanc (HE)	Achéhé		0,0kg
334	85	Ecrou hexagonal (Style 2) ISO 4033 - M10	NF ISO 4033	Acier zingué blanc (HE)	Achéhé		0,0kg
337	8	Vis à tête Hexagonale ISO 4017 - M20 x 60	NF ISO 4017	Steel	Achéhé		0,2kg
338	16	Tige filetée M8 x 40	DIN 976	Acier zingué blanc (HE)	Achéhé		0,0kg
339	8	Vis à tête Hexagonale ISO 4017 - M12 x 55	NF ISO 4017	Steel	Achéhé		0,1kg
340	4	Vis à tête Hexagonale ISO 4017 - M16 x 110	NF ISO 4017	Steel	Achéhé		0,2kg
341	6	Vis à tête Hexagonale ISO 4017 - M16 x 45	NF ISO 4017	Steel	Achéhé		0,1kg
342	18	Vis à tête Hexagonale ISO 4017 - M16 x 50	NF ISO 4017	Steel	Achéhé		0,1kg
343	6	Vis à tête Hexagonale ISO 4017 - M16 x 55	NF ISO 4017	Steel	Achéhé		0,1kg
344	6	Vis à tête Hexagonale ISO 4017 - M16 x 65	NF ISO 4017	Steel	Achéhé		0,1kg
345	2	Rondelle plate ISO 7094 - 20	NF ISO 7094	Steel	Achéhé		0,2kg
346	24	Ecrou hexagonal (Style 2) ISO 4033 - M8	NF ISO 4033	Acier zingué blanc (HE)	Achéhé		0,0kg
347	36	Ecrou hexagonal (Style 2) ISO 4033 - M16	NF ISO 4033	Acier zingué blanc (HE)	Achéhé		0,0kg
348	6	Ecrou hexagonal (Style 2) ISO 4033 - M14	NF ISO 4033	Acier zingué blanc (HE)	Achéhé		0,0kg
349	8	Ecrou hexagonal (Style 2) ISO 4033 - M12	NF ISO 4033	Acier zingué blanc (HE)	Achéhé		0,0kg
350	8	Vis à tête Hexagonale ISO 4017 - M20 x 70	NF ISO 4017	Steel	Achéhé		0,2kg
356	24	Rondelle plate (Normal) ISO 7089 - 8	NF ISO 7089	Acier zingué blanc (HE)	Achéhé		0,0kg
357	1	Motoreducteur Ø50x100 (Couple : 1030 N/m)(Puissance : 3 Kw) (Position connecteur : 180°)			Achéhé	SEW	95,0kg
358	1	Jeu de pignon à chaîne pour tendeur - Simple			Achéhé	Michaud Chailly	
359	1	Jeu de pignon à chaîne pour tendeur - Double			Achéhé	Michaud Chailly	

Date de création : 08/12/2022

Auteur : JPO

Vérificateur : -

Approbateur : -

Matériau : Roulement :

Tolérances générales : -

Détail de surface général : -

Projet : HE 4.0

Désignation : Crible (Entraxe E & S : 3000 mm)

Référence : H40-THE-CRI-000

Rev. : 6

Masse : 2013,5kg

Ech. : 1 : 10

Format : A3

Folio : 2/54

POUR ACHAT

H40-THE-CRI-000-Crible 2/54

H

G

B

A