

MEPNN Supplier Scouting Opportunity Synopsis

Section 1: General Information

Scouting Number	2025-117
Item to be Scouted	Steel Floor Tiles
Days to be scouted	30
Response Due By	05/16/2025
Description	Steel floor tiles similar to TATE ASN1250 needed in use of a simulation room.
State item to be used in	Virginia

Section 2: Technical Information

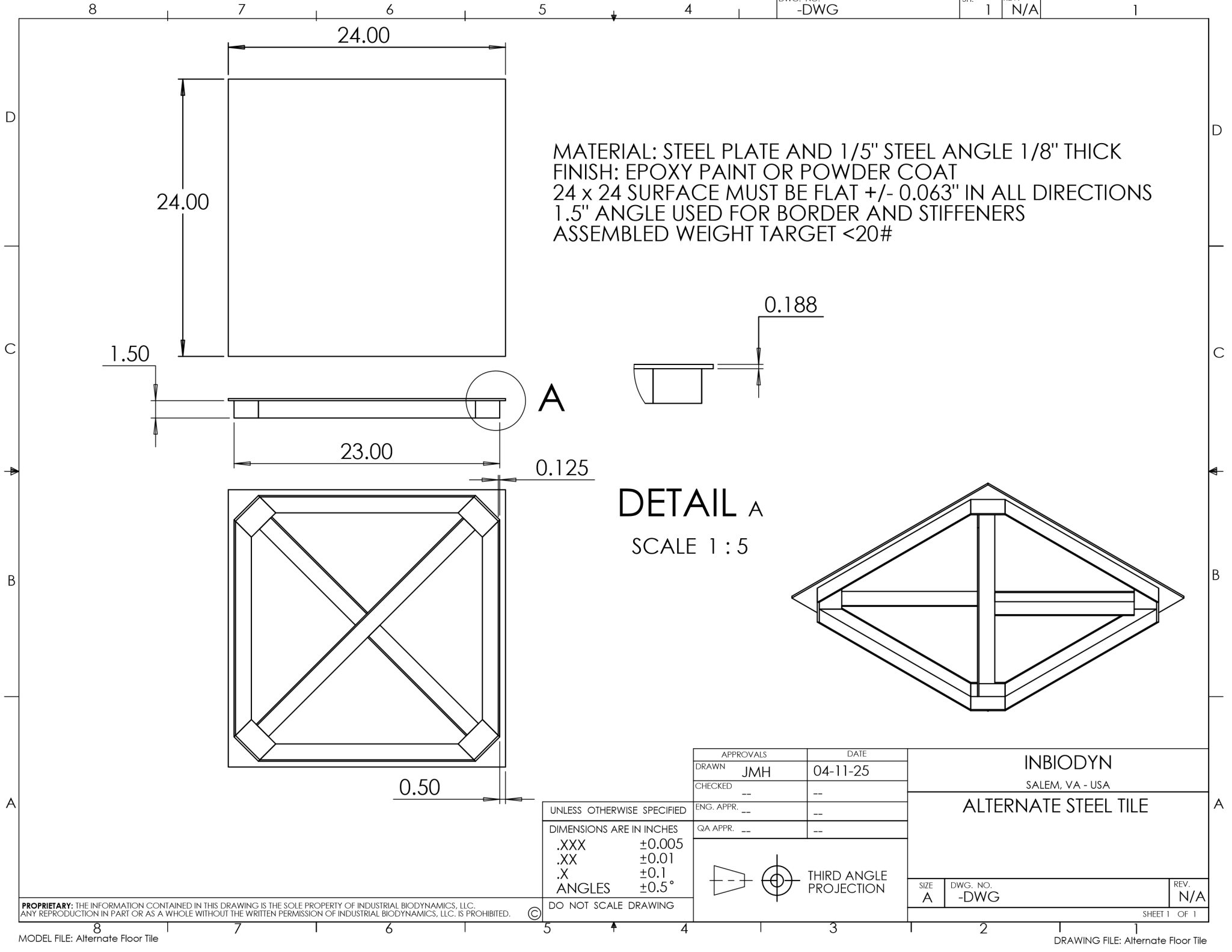
Type of supplier being sought	Manufacturer
Reason	2nd Supplier
Describe the manufacturing processes (elaborate to provide as much detail as possible)	Steel floor tile reinforced with angle or square tubing around edges and across the bottom with powder coating or epoxy painting to surface.
Provide dimensions / size / tolerances / performance specifications for the item	24in x 24in steel tile with surface tolerance of +/- .063" in all directions. Angle or square tubing may be used for the border and stiffeners. Weight at roughly 20lbs or less. Painted with epoxy paint or powder coating. See attachments for optional designs.
List required materials needed to make the product, including materials of product components	.188 (3/16") steel sheet 1.5" steel angle and/or steel square tubing
Are there applicable certification requirements?	No
Are there applicable regulations?	No
Are there any other standards, requirements, etc.?	No
Additional Technical Comments	

Section 4: Business Information

Estimated potential business volume	300 annually with potential for more
Estimated target price / unit cost information (if unavailable explain)	Looking for quotes from organizations to better understand domestic pricing.
When is it needed by?	September 2025
Describe packaging requirements	Palletized
Where will this item be shipped?	Southwest Virginia

Additional Comments

Is there other information you would like to include?	
---	--



MATERIAL: STEEL PLATE AND 1/5" STEEL ANGLE 1/8" THICK
FINISH: EPOXY PAINT OR POWDER COAT
24 x 24 SURFACE MUST BE FLAT +/- 0.063" IN ALL DIRECTIONS
1.5" ANGLE USED FOR BORDER AND STIFFENERS
ASSEMBLED WEIGHT TARGET <20#

A

DETAIL A
SCALE 1 : 5

APPROVALS		DATE
DRAWN	JMH	04-11-25
CHECKED	--	--
ENG. APPR.	--	--
QA APPR.	--	--

INBIODYN
SALEM, VA - USA

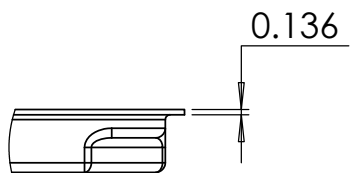
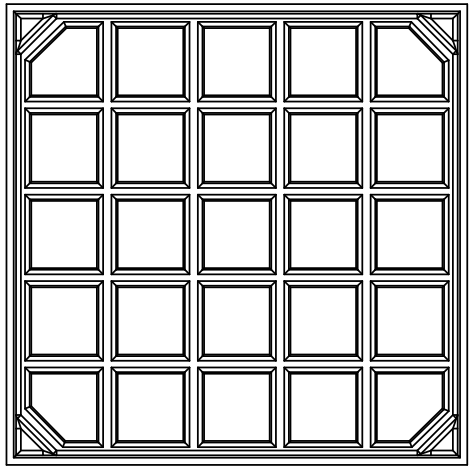
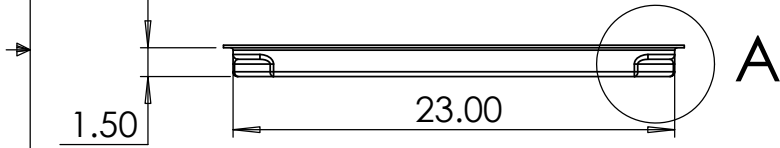
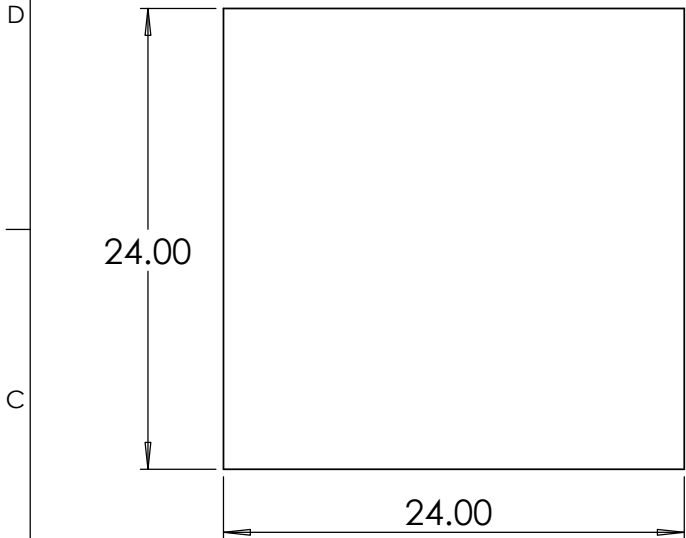
ALTERNATE STEEL TILE

UNLESS OTHERWISE SPECIFIED	
DIMENSIONS ARE IN INCHES	
.XXX	±0.005
.XX	±0.01
.X	±0.1
ANGLES	±0.5°
DO NOT SCALE DRAWING	



THIRD ANGLE
PROJECTION

SIZE A	DWG. NO. -DWG	REV. N/A
-----------	------------------	-------------

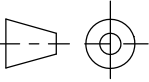


DETAIL A
SCALE 1 : 5

REFERENCE TATE PRODUCT ASN1250
IMPORTANT TO HAVE BORDER TO CONSTRAIN TILE IN THE FRAME
IMPORTANT TO HAVE SOME UNDERSTRUCTURE FOR RIDIGITY

UNLESS OTHERWISE SPECIFIED	
DIMENSIONS ARE IN INCHES	
.XXX	±0.005
.XX	±0.01
.X	±0.1
ANGLES	±0.5°
DO NOT SCALE DRAWING	

APPROVALS		DATE
DRAWN	JMH	04-11-25
CHECKED	--	--
ENG. APPR.	--	--
QA APPR.	--	--



THIRD ANGLE
PROJECTION

INBIODYN		
SALEM, VA - USA		
STEEL TILE 2x2		
SIZE A	DWG. NO. 71-200002-DWG	REV. N/A
SHEET 1 OF 1		