

# MEPNN Supplier Scouting Opportunity Synopsis

## Section 1: General Information

Scouting Number	2025-104
Item to be Scouted	Bobbin Sub-Assembly
Days to be scouted	24
Response Due By	05/10/2025
Description	The Bobbin Sub-Assy consists of 3 pcs – two stamped steel pieces and a plastic injection molded tube-shaped component – “tube” or “sleeve”.

## Section 2: Technical Information

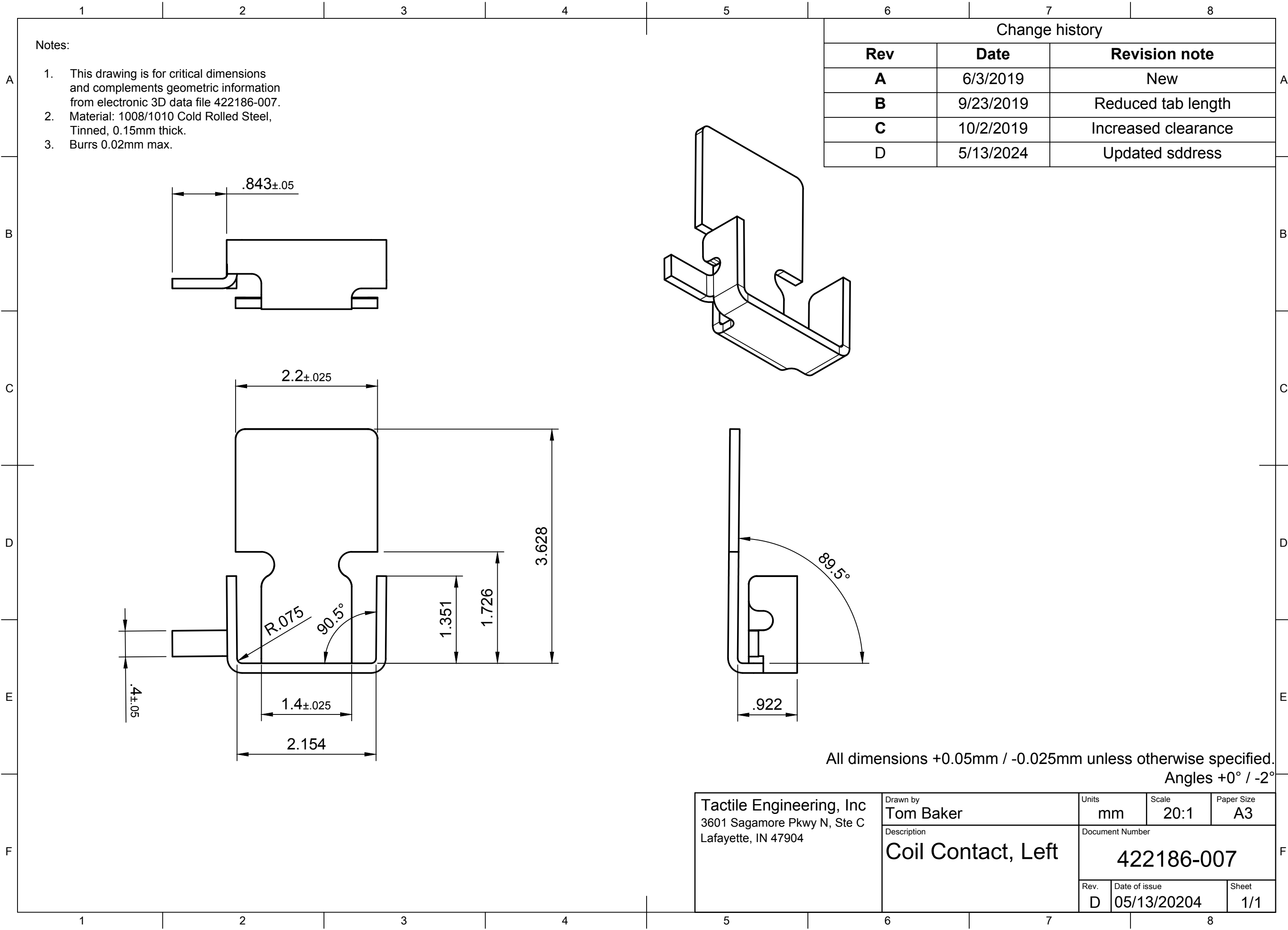
Type of supplier being sought	- either 1008 or 1010 cold rolled steel material, tinned, with 0.15mm thickness; Burrs: 0.02mm max. Manufacturer.
Reason	The plastic “tube” is a blank LCP material and the component will be supplied by the Manufacturer.
Describe the manufacturing processes (elaborate to provide as much detail as possible)	Stamp two (2) steel parts and sub-assemble them to a plastic injection molded tube or sleeve (the sleeve will be provided by the manufacturer). The Supplier must be able to stamp the two steel clips AND provide the Sub-Assembly. Microscopic or Small metal stamping of 1008 or 1010 cold rolled steel. Metal stamping capability must be able to stamp millimeter dimension components and hold tolerances.
Provide dimensions / size / tolerances / performance specifications for the item	The two stamped steel pieces (described as “clips”) are: - on a very small size scale (e.g. millimeter dimensions) - either 1008 or 1010 cold rolled steel material, tinned, with 0.15mm thickness; Burrs: 0.02mm max.  Drawings of the components and the sub-assembly are provided
List required materials needed to make the product, including materials of product components	The 'bobbin blank' (the 'tube') is made of blank LCP. This part will be supplied by the Manufacturer. The steel stamping 'clips' are either 1008 or 1010 cold rolled steel material, tinned, with 0.15mm thickness; Burrs: 0.02mm max.
Are there applicable certification requirements?	No
Are there applicable regulations?	No
Are there any other standards, requirements, etc.?	No
Additional Technical Comments	

## Section 4: Business Information

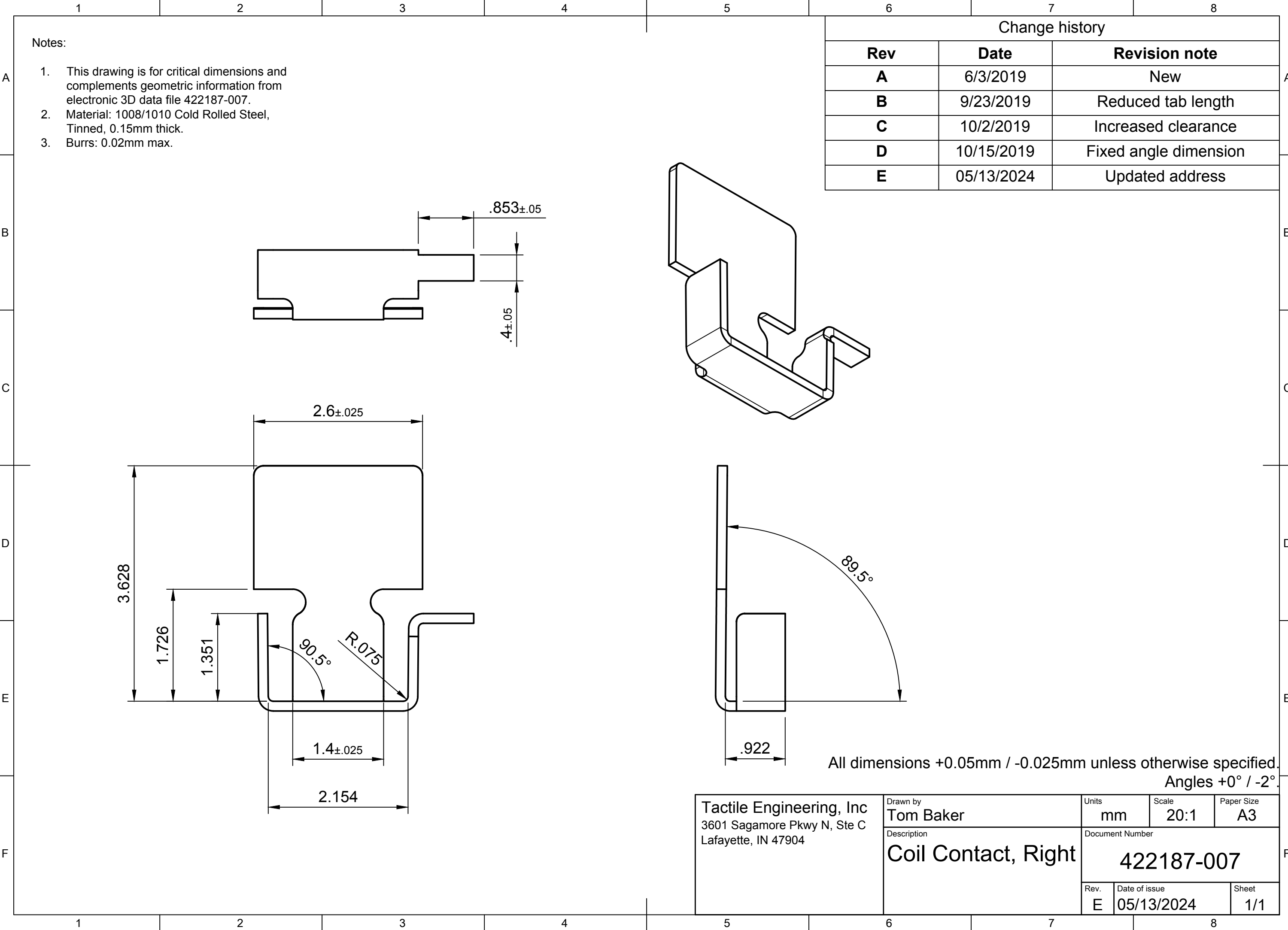
Estimated potential business volume	Quarterly Volume is typically 150,000-200,000 pcs / quarter, but can range between 120,000-240,000 pcs / quarter.
Estimated target price / unit cost information (if unavailable explain)	Target pricing is \$0.12 to \$0.16 / unit
When is it needed by?	Target is to have a new supplier qualified by July 2025
Describe packaging requirements	Ship in plastic bags; quantity of 1000 pcs/bag
Where will this item be shipped?	Lafayette, IN

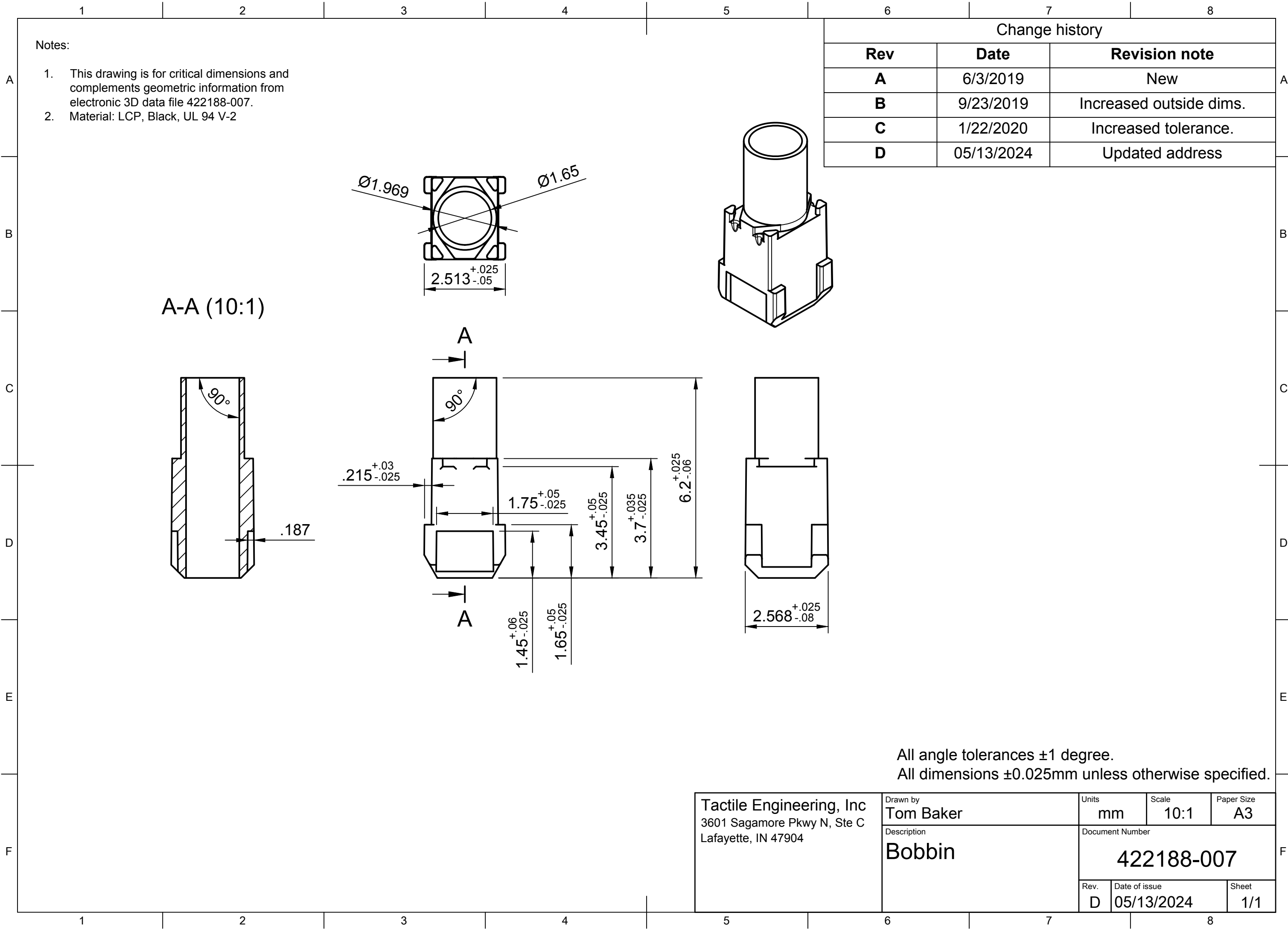
## Additional Comments

Is there other information you would like to include?



All dimensions +0.05mm / -0.025mm unless otherwise specified.  
Angles +0° / -2°





Notes:

1. This drawing is for critical dimensions and complements geometric information from electronic 3D data file 422188-007.
2. Material: LCP, Black, UL 94 V-2

Change history

Rev	Date	Revision note
A	6/3/2019	New
B	9/23/2019	Increased outside dims.
C	1/22/2020	Increased tolerance.
D	05/13/2024	Updated address

All angle tolerances  $\pm 1$  degree.  
All dimensions  $\pm 0.025$ mm unless otherwise specified.

Tactile Engineering, Inc  
3601 Sagamore Pkwy N, Ste C  
Lafayette, IN 47904

Drawn by  
Tom Baker

Description

Bobbin

Units

mm

Scale

10:1

Paper Size

A3

Document Number

422188-007

Rev.

D

Date of issue

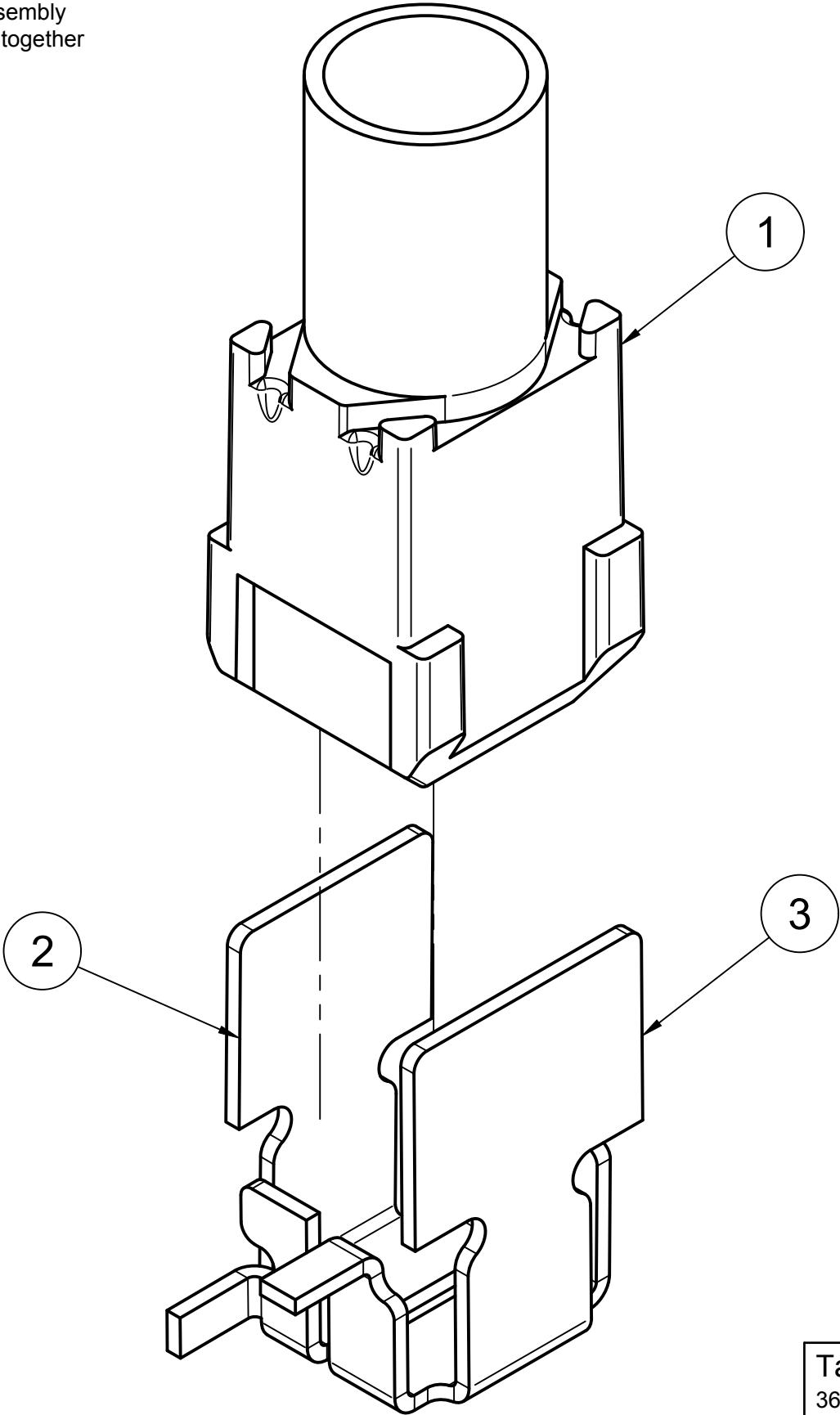
05/13/2024

Sheet

1/1

Notes

1. The coil contacts (items 2 and 3) are stamped as a single piece for assembly before being separated. To allow tolerance for the assembly process, they should be stamped closer together by 0.05mm to 0.1mm than their final configuration.



Change history

Rev	Date	Revision note
A		New
B	9/23/2019	Updated sub-components
C	10/2/2019	Added assembly note
D	2/19/2020	Remove parts list
E	7/15/2020	Add critical dimensions sheet
F	9/14/2020	Update critical dimensions
G	05/13/2024	Updated address

Tactile Engineering, Inc  
3601 Sagamore Pkwy N Ste C  
Lafayette, IN 47904

Drawn by  
Tom Baker

Description  
Coil Bobbin Assembly

Units  
mm

Scale  
20:1

Paper Size  
A3

Document Number  
461814-007

Rev.

F

Date of issue

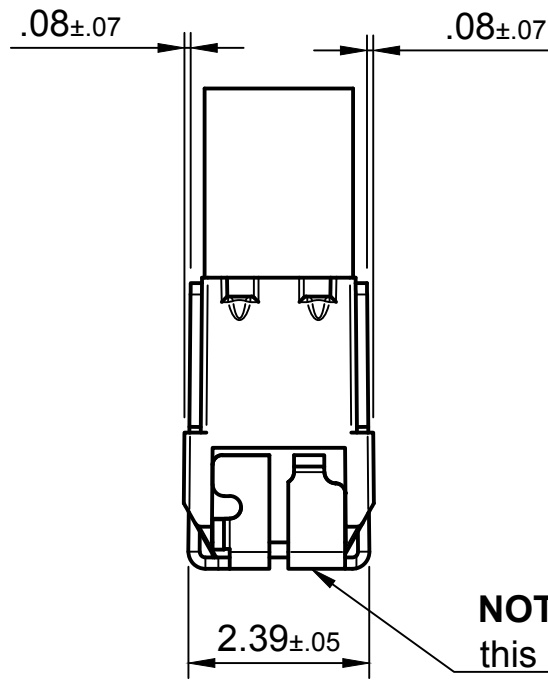
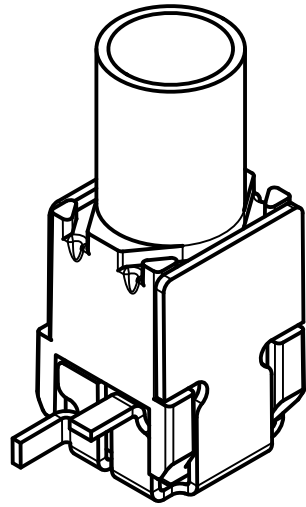
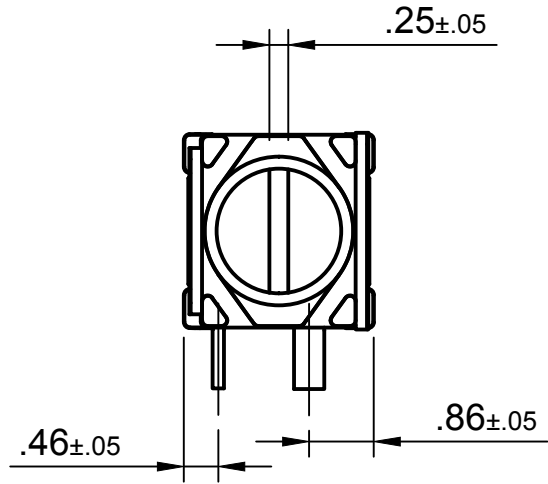
05/13/2024

Sheet

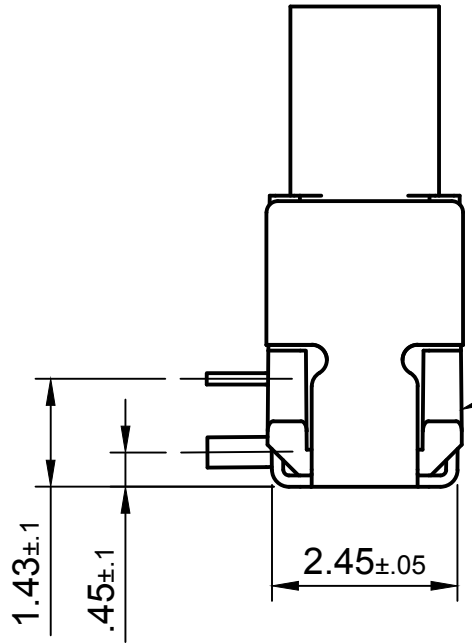
1/2

Notes:

1. This drawing is for critical dimensions and complements geometric information from electronic 3D data file 461814-007.



**NOTE:** No burrs below this surface.



**NOTE:** Tabs must not be proud of bobbin.

Tactile Engineering, Inc  
3601 Sagamore Pkwy N Ste C  
Lafayette, IN 47904

Drawn by  
Tom Baker

Description  
Coil Bobbin Assembly

Units  
mm

Scale  
10:1

Paper Size  
A3

Document Number  
461814-007

Rev.

F

Date of issue

Sept 14, 2020

Sheet

2/2