

MEPNN Supplier Scouting Opportunity Synopsis

Section 1: General Information

| | |
|------------------------------|--|
| Scouting Number | 2025-069 |
| Item to be Scouted | Brass check valve |
| Days to be scouted | 30 |
| Response Due By | 04/04/2025 |
| Description | Refrigeration system valve, check, globe |
| Notify Requester Immediately | No |
| State item to be used in | Nevada |

Section 2: Technical Information

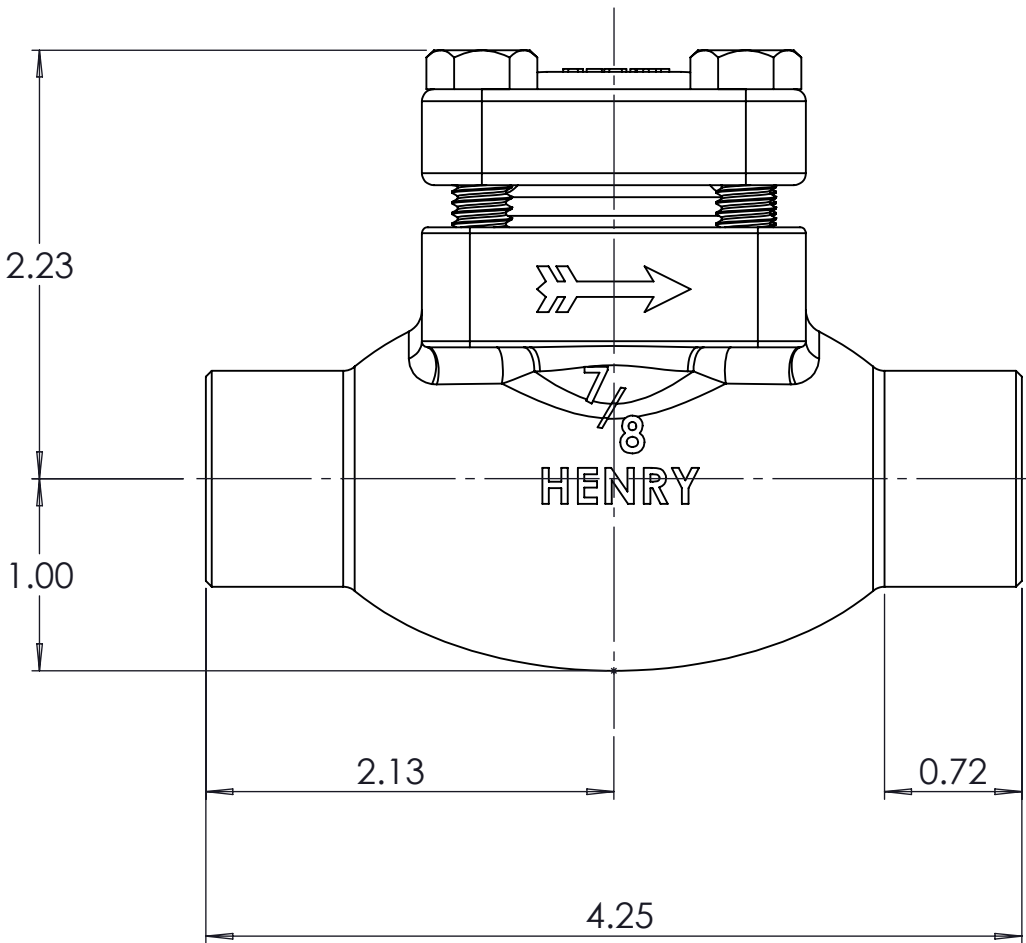
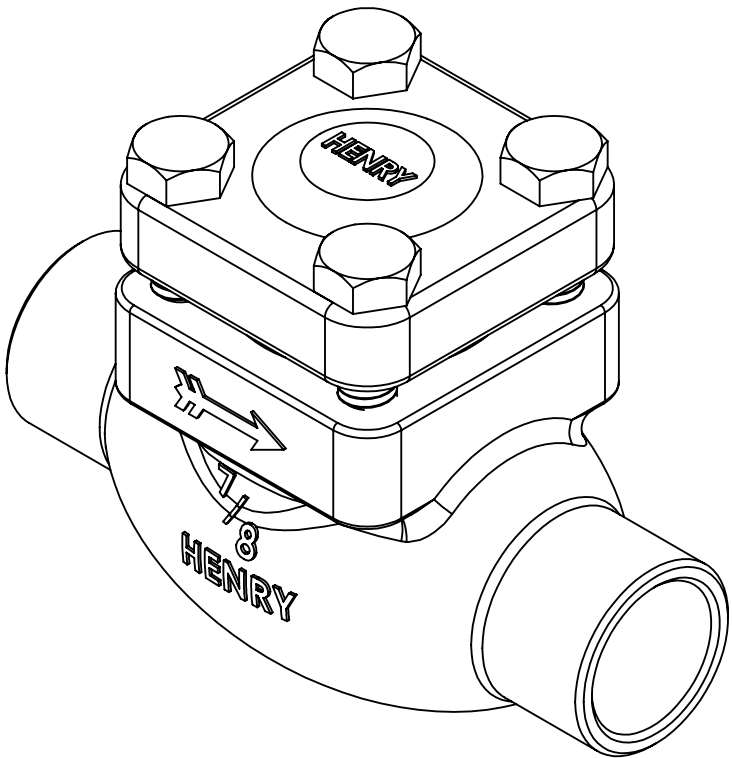
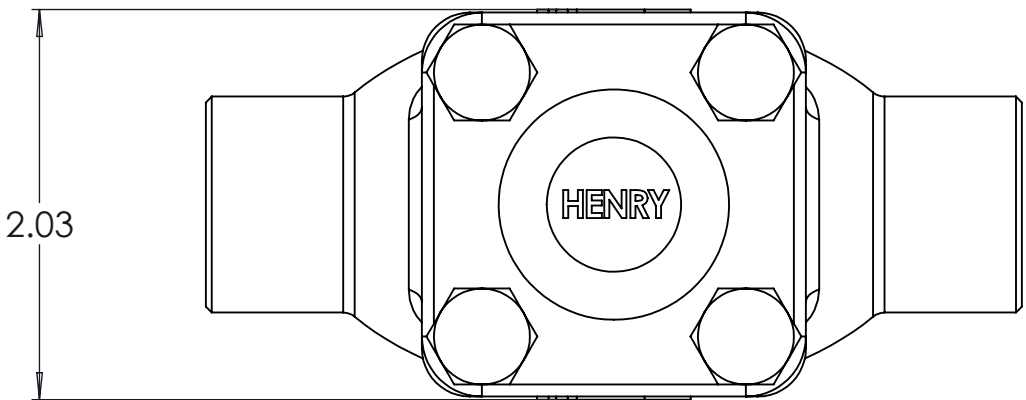
| | |
|---|---|
| Type of supplier being sought | Manufacturer |
| Reason | 2nd Supplier |
| Describe the manufacturing processes (elaborate to provide as much detail as possible) | Metal casting |
| Provide dimensions / size / tolerances / performance specifications for the item | 1. 205-7/8" valve, check, globe, 7/8"ODS 2. 205-1-1/8" valve check, globe, 1-1/8" ODS 3. 205-1-5/8" valve, check, globe, 1-5/8" ODS 4. 205-2-1/8" valve, chek, globe, 2-1/8" ODS |
| List required materials needed to make the product, including materials of product components | Brass |
| Are there applicable certification requirements? | No |
| Are there applicable regulations? | No |
| Are there any other standards, requirements, etc.? | Yes |
| Details | Pressure 34.5 Barg (500 PSIg) Needs to be compliant with ASME ANSI B31.5, AS/NZS 5149.2, CE, ISO 5149.2, and UL |
| NAICS 1 | |
| NAICS 2 | |
| Additional Technical Comments | -29°C to +150°C (-20°F to +302°F) |

Section 4: Business Information

| | |
|---|---|
| Estimated potential business volume | 100/YR |
| Estimated target price / unit cost information (if unavailable explain) | 1. 205-7/8" valve, check, globe, 7/8"ODS = \$185 2. 205-1-1/8" valve check, globe, 1-1/8" ODS = \$145 3. 205-1-5/8" valve, check, globe, 1-5/8" ODS = \$225 4. 205-2-1/8" valve, chek, globe, 2-1/8" ODS = \$575 |
| When is it needed by? | immediate (March 2025) |
| Describe packaging requirements | Individually boxed |
| Where will this item be shipped? | Las Vegas, NV |

Additional Comments

| | |
|---|---------------------------|
| Is there other information you would like to include? | See the attached drawings |
|---|---------------------------|



NOTES:

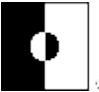
1. MAXIMUM WORKING PRESSURE : 500 PSIG.
2. ALLOWABLE OPERATING TEMPERATURE: -20°F to 300°F.
3. GASKET AND CAUTION TAG TO BE SEALED IN THE PLASTIC BAG AND SHIPPED LOOSE WITH VALVE.

TOLERANCES UNLESS OTHERWISE SPECIFIED
LINEAR= ± 0.030 , ANGULAR= $\pm 2^\circ$

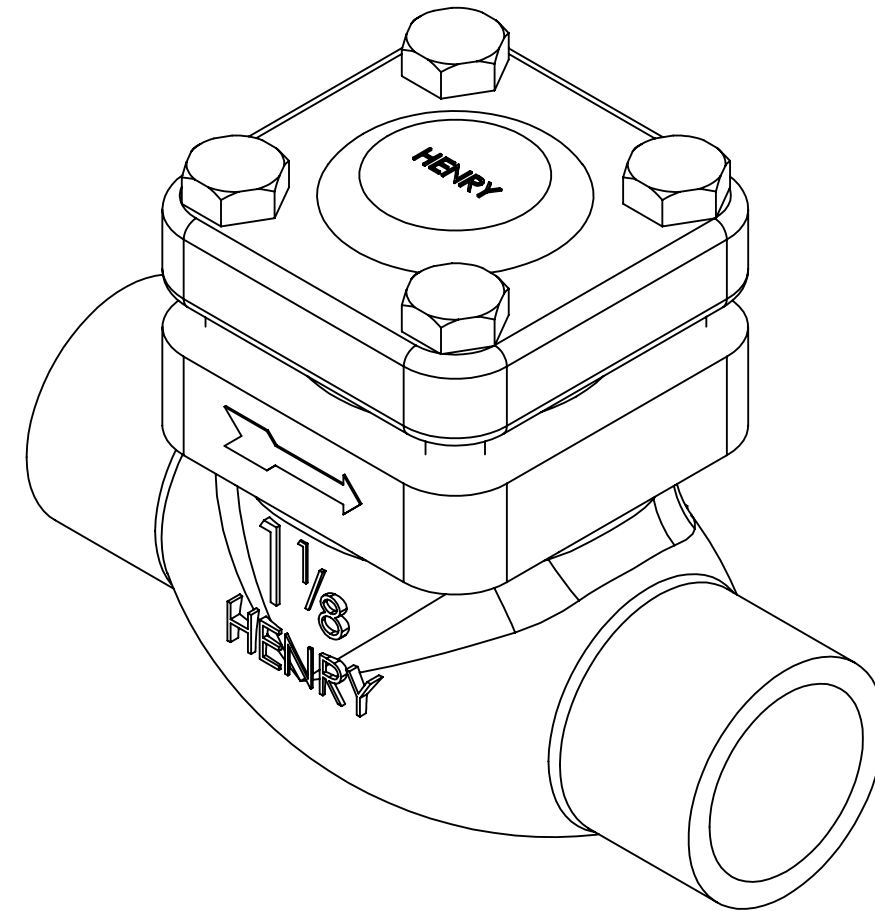
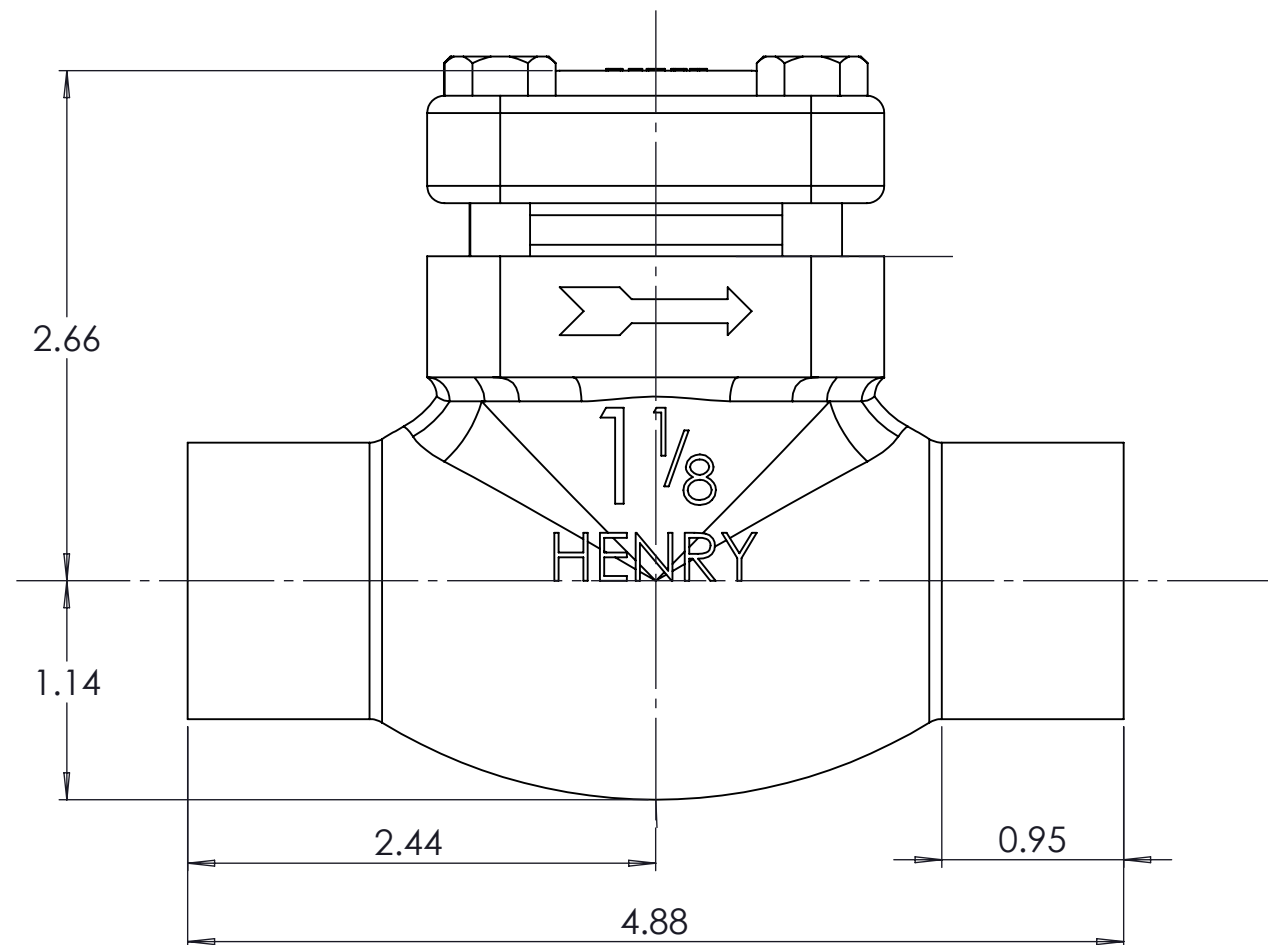
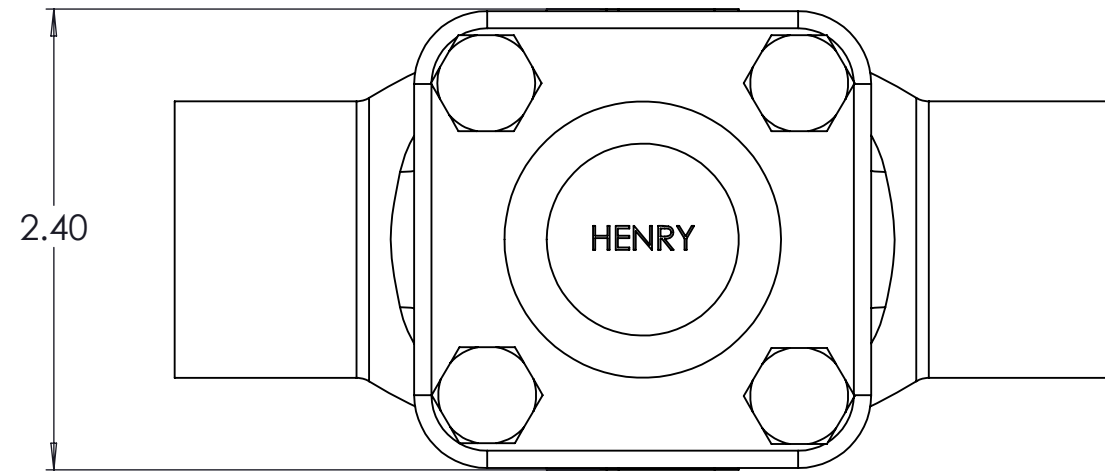
 3RD ANGLE PROJECTION

COMMENTS:

PROPRIETARY AND CONFIDENTIAL
THE INFORMATION CONTAINED IN THIS DRAWING
IS THE SOLE PROPERTY OF HENRY TECHNOLOGIES.
ANY REPRODUCTION IN PART OR AS A WHOLE
WITHOUT THE WRITTEN PERMISSION OF HENRY
TECHNOLOGIES IS PROHIBITED.

| | |
|-----------------------------|--|
| NEXT ASSY.: | SIM. TO: |
| STOCK SIZE: | MATERIAL: CAST BRONZE |
| SIZE: 7/8" O.D.S | WEIGHT: 2.48 LBS |
| DESCRIPTION: | |
| CHECK VALVE 7/8" ODS | |
| SHEET: 1 OF 1 |  HENRY |
| SCALE: 1:1 | |
| DRAWN: KD | |
| DATE: 09/06/2024 | |
| APPROVED: | DRAWING NO./PART NO.: 205-7/8-CUST |
| | REV: - |

Other: H:\HENRY\ValveAssy



NOTES:

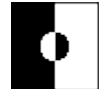
1. MAXIMUM WORKING PRESSURE : 500 PSIG.
2. ALLOWABLE OPERATING TEMPERATURE: -20°F to 300°F.
3. GASKET AND CAUTION TAG TO BE SEALED IN THE PLASTIC BAG AND SHIPPED LOOSE WITH VALVE.

TOLERANCES UNLESS OTHERWISE SPECIFIED
LINEAR= ± 0.030 , ANGULAR= $\pm 2^\circ$

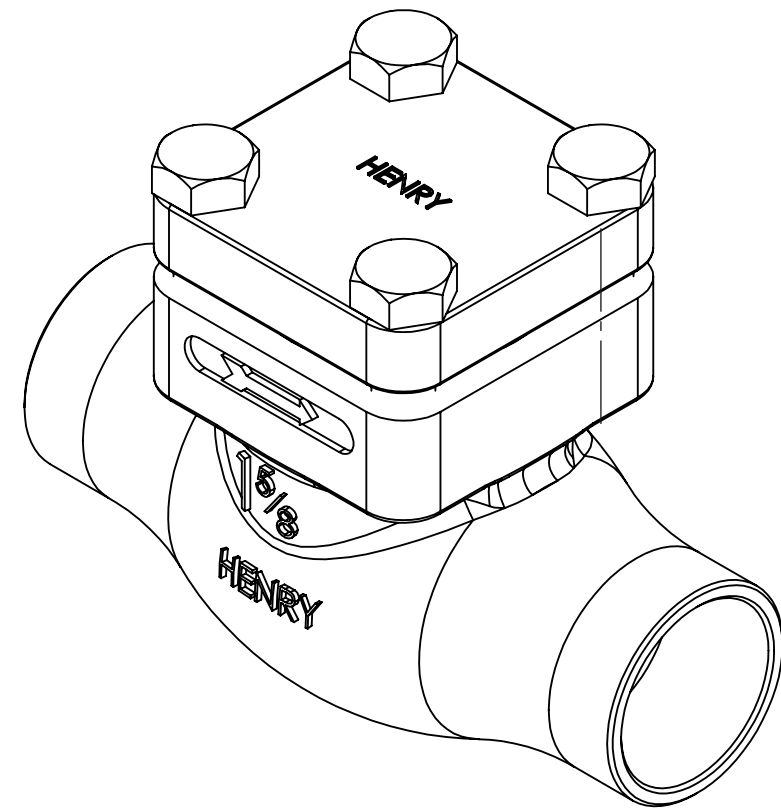
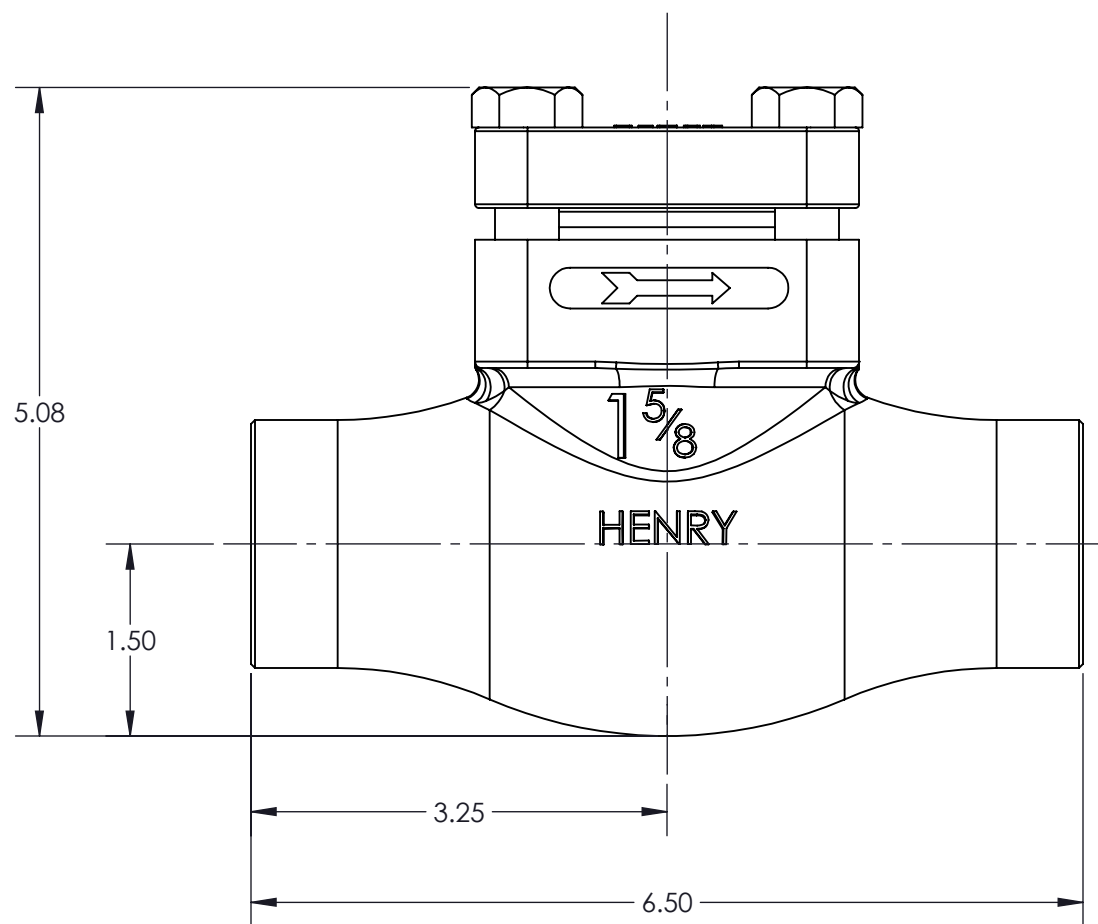
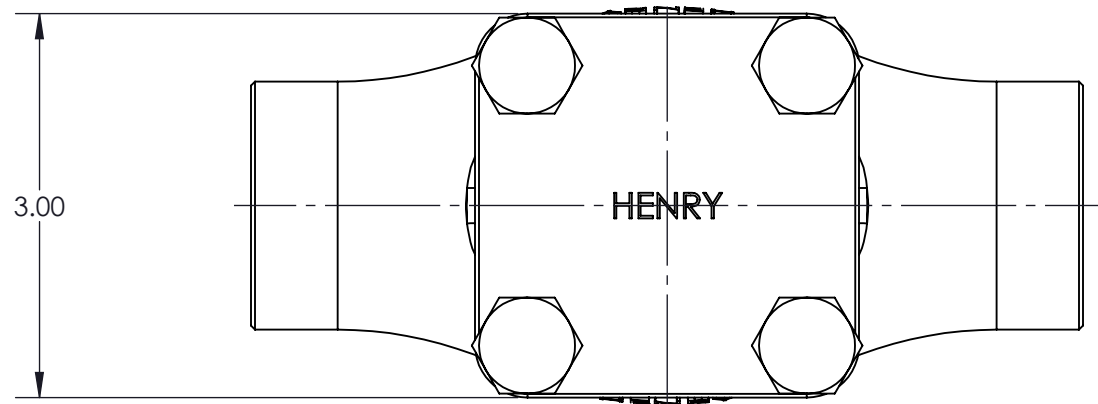
 3RD ANGLE PROJECTION

COMMENTS:

PROPRIETARY AND CONFIDENTIAL
THE INFORMATION CONTAINED IN THIS DRAWING
IS THE SOLE PROPERTY OF HENRY TECHNOLOGIES.
ANY REPRODUCTION IN PART OR AS A WHOLE
WITHOUT THE WRITTEN PERMISSION OF HENRY
TECHNOLOGIES IS PROHIBITED.

| | |
|-------------------------------|--|
| NEXT ASSY.: | SIM. TO: |
| STOCK SIZE: | MATERIAL: CAST BRONZE |
| SIZE: 1-1/8" O.D.S | WEIGHT: 3.801 LBS |
| DESCRIPTION: | |
| CHECK VALVE 1-1/8" ODS | |
| SHEET: 1 OF 1 |  HENRY |
| SCALE: 1:1 | |
| DRAWN: KD | |
| DATE: 09/06/2024 | |
| APPROVED: | DRAWING NO./PART NO.: 205-1-1/8-CUST |
| | REV: - |

Other: H:\HENRY\ValveAssy\



NOTES:

1. MAXIMUM WORKING PRESSURE : 500 PSIG.
2. ALLOWABLE OPERATING TEMPERATURE: -20°F to 300°F.
3. GASKET AND CAUTION TAG TO BE SEALED IN THE PLASTIC BAG AND SHIPPED LOOSE WITH VALVE.


TOLERANCES UNLESS OTHERWISE SPECIFIED
LINEAR= ± 0.030 , ANGULAR= $\pm 2^\circ$

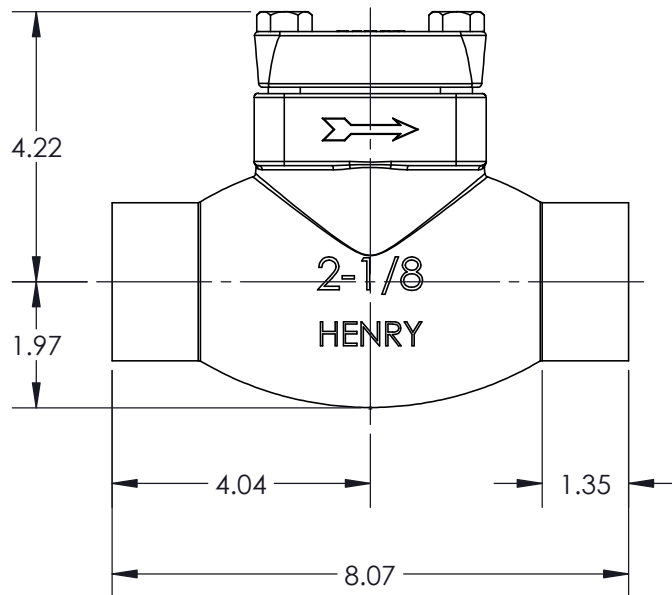
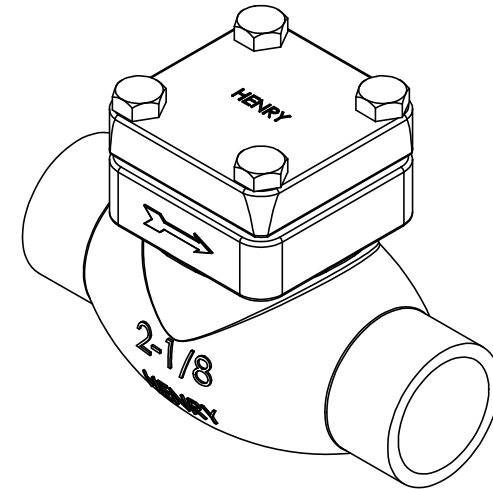
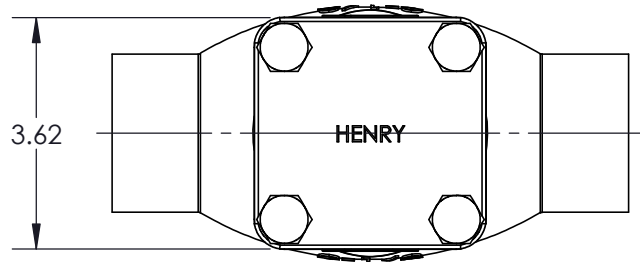
3RD ANGLE PROJECTION

COMMENTS:

PROPRIETARY AND CONFIDENTIAL
THE INFORMATION CONTAINED IN THIS DRAWING
IS THE SOLE PROPERTY OF HENRY TECHNOLOGIES.
ANY REPRODUCTION IN PART OR AS A WHOLE
WITHOUT THE WRITTEN PERMISSION OF HENRY
TECHNOLOGIES IS PROHIBITED.

Other: H:\HENRY\ValveAssy\

| | |
|-------------------------------|--|
| NEXT ASSY.: | SIM. TO: |
| STOCK SIZE: | MATERIAL: CAST BRONZE |
| SIZE: | WEIGHT: |
| DESCRIPTION: | |
| CHECK VALVE 1-5/8" ODS | |
| SHEET: 1 OF 1 |  HENRY |
| SCALE: 2:3 | |
| DRAWN: KD | |
| DATE: 9/25/2024 | |
| APPROVED: | DRAWING NO./PART NO.: 205-1-5/8-CUST |
| | REV: - |



NOTES:

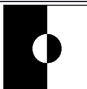
1. MAXIMUM WORKING PRESSURE : 500 PSIG.
2. ALLOWABLE OPERATING TEMPERATURE: -20°F to 300°F.
3. GASKET AND CAUTION TAG TO BE SEALED IN THE PLASTIC BAG AND SHIPPED LOOSE WITH VALVE.
4. UL REGISTERED.

TOLERANCES UNLESS OTHERWISE SPECIFIED
 0.00=±.015, 0.000=±.005, ANG=±0.5°
 63 FINISH ALL OVER REMOVE ALL BURRS



COMMENTS:

PROPRIETARY AND CONFIDENTIAL
 THE INFORMATION CONTAINED IN THIS DRAWING
 IS THE SOLE PROPERTY OF HENRY TECHNOLOGIES.
 ANY REPRODUCTION IN PART OR AS A WHOLE
 WITHOUT THE WRITTEN PERMISSION OF HENRY
 TECHNOLOGIES IS PROHIBITED.

| | | | |
|------------------------|---|----------|--|
| NEXT ASSY.: | SIM. TO: | | |
| STOCK SIZE: | MATERIAL: FORGED BRASS | | |
| SIZE: | WEIGHT: 14.72 LBS | | |
| DESCRIPTION: | CHECK VALVE | | |
| SHEET: 1 OF 1 |  | HENRY® | |
| SCALE: 1:3 | | | |
| DRAWN: NT | | | |
| DATE: 9/24/2024 | | | |
| APPROVED: | DRAWING NO./PART NO.: | REV: | |
| | 205-2-1/8-CUST | - | |

Other: **H:\HVSubAssy(8s)**