

ITEM OPPORTUNITY SYNOPSIS

Scouting Number:	2024-073
Name of the item to be scouted:	Wheelchair Brake
State item to be used in:	Idaho

Describe the Item:

Please describe the item application/the end use of the item.	This product, Wheelchair Brake Machined/Anodized Components, is an aluminum wheelchair brake to be added to existing wheelchairs to replace OEM brakes. 1. Mount Rod - Attaches the brake system to the clamp on the wheelchair. Aluminum machined with lathe and mill. Request for anodizing in black. 2. Brake Mount Plate - Attaches to mount rod and acts as stationary pivot points for levered brake. Aluminum machined anodized black.
--	---

Supplier Information:

Type of Supplier Being Sought (select from the list below):	
Manufacturer	x
Contract Manufacturer	
Distributor	
Other (Please Specify)	
Reason for Scouting Submission (select from the list below)	
2nd Supplier	
Price	
Re-Shore	
Past supplier no longer available	
New Product Startup	x
BABA	
Other (Please Specify)	

Summary of Technical Specifications and Performance Requirements:

Describe the manufacturing processes (elaborate to provide as much detail as possible)	The separate features and their manufacturing process is as follows. 1. Mount Rod - Aluminum machined with lathe and mill. Request for anodizing in black. 2. Brake Mount Plate - Aluminum machined anodized black.
Provide dimensions / size / tolerances / performance specifications of the item	See drawings attached.
List required materials needed to make the product, including materials of product components, if applicable	6061 Aluminum
Are there applicable certification requirements?	
Yes	
No	x
Please explain:	
Are there any applicable regulations that apply to the production of this item?	
Yes	
No	x
Please explain:	
Are there any other standards / requirements?	
Yes	
No	x
Please explain:	

Additional Comments:

Additional technical comments:	See drawing attached. 1. Mount Rod - Attaches the brake system to the clamp on the wheelchair. Aluminum machined with lathe and mill. Request for anodizing in black. 2. Brake Mount Plate - Attaches to mount rod and acts as stationary pivot points for levered brake. Aluminum machined anodized black.
---------------------------------------	---

Volume and Pricing:

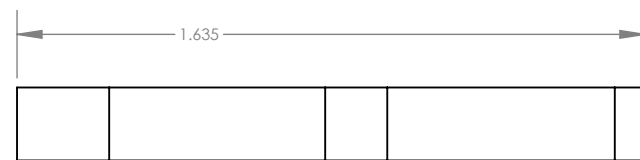
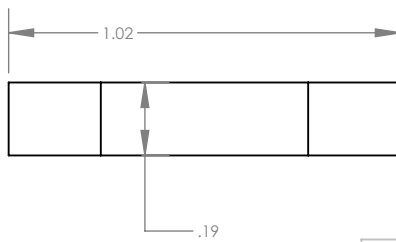
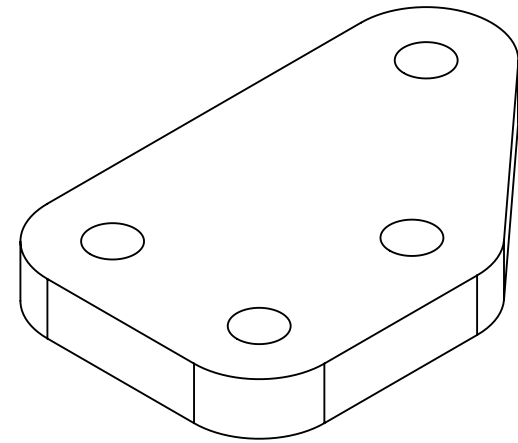
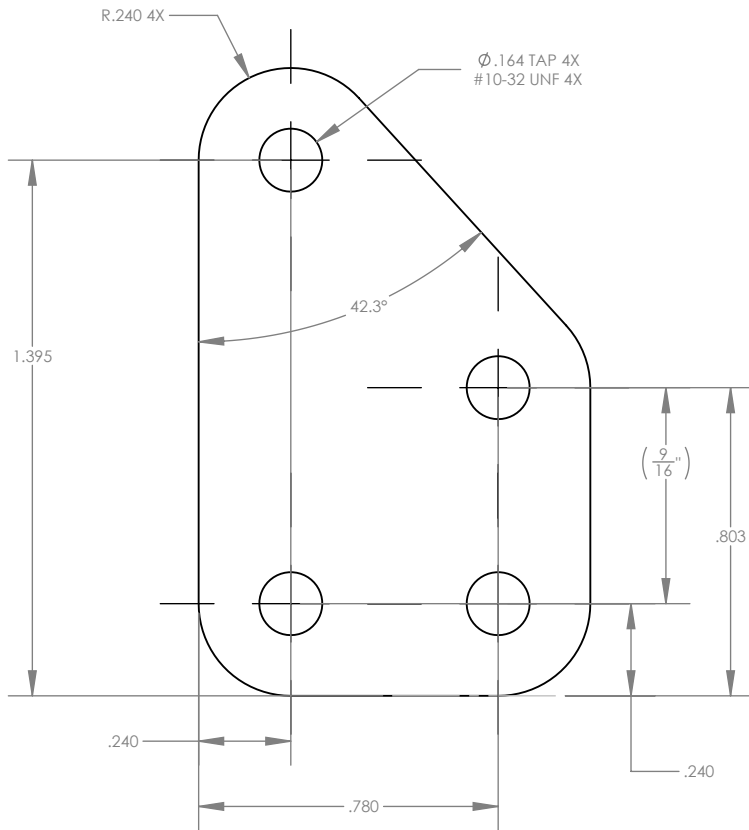
Estimated Potential Business Volume (i.e. #units per day, month, year):	Request for quotes at 200, 1000, 2000 sets
Estimated Target Price/Unit Cost Information:	\$3,00 per piece

Delivery Requirements:


When is it needed by? (Immediate, 30 days, 6 months, etc.)	3-4 months
Describe packaging requirements (i.e. individually/group packaging, etc.)	Open to respondent recommendations
Where will this item be shipped?	Boise, Idaho

Additional Comments:

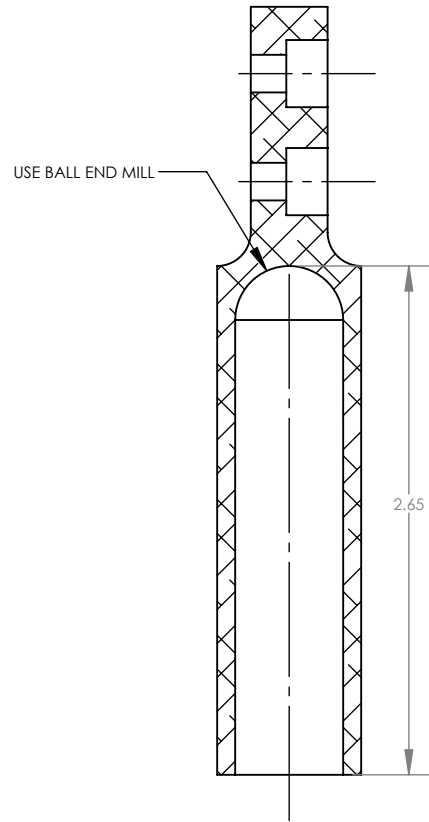
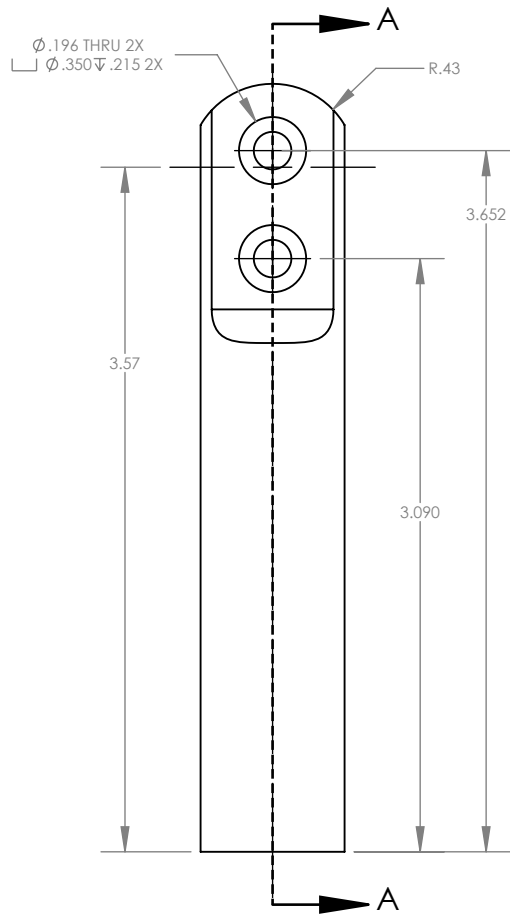
Is there other information you would like to include?	
---	--



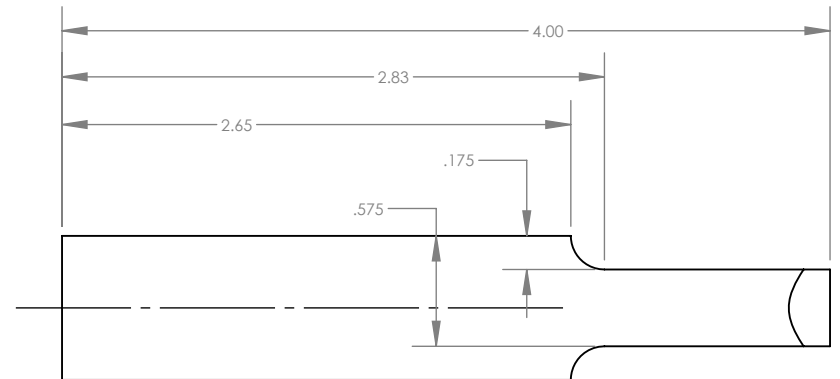
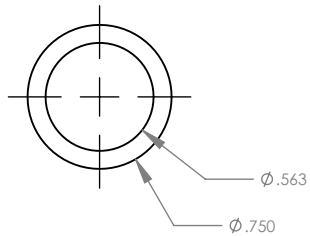
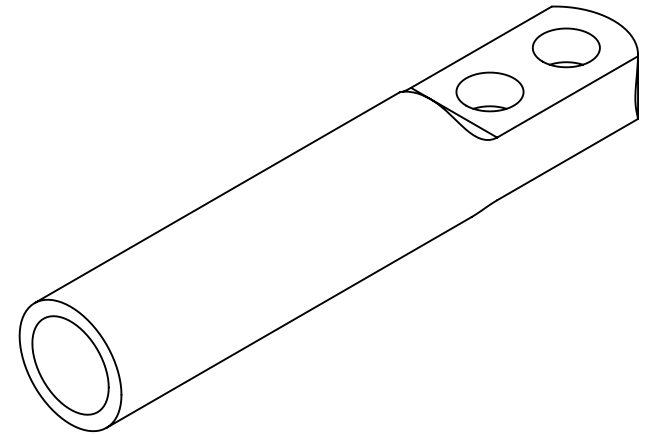
THE INFORMATION CONTAINED
 IN THIS DRAWING IS THE SOLE
 PROPERTY OF RW DESIGN SP.
 ANY REPRODUCTION IN PART
 OR AS A WHOLE WITHOUT THE
 WRITTEN PERMISSION OF
 RW DESIGN SP IS PROHIBITED.


DRAWN BY	DATE
RJW	2024-01-24
 THIRD ANGLE PROJECTION	
DIM. IN TOL. UNLESS OTHERWISE NOTED	
TWO PLACE DECIMAL	+/- 0.01
THREE PLACE DECIMAL	+/- 0.005
ANGULAR	+/- 1.0

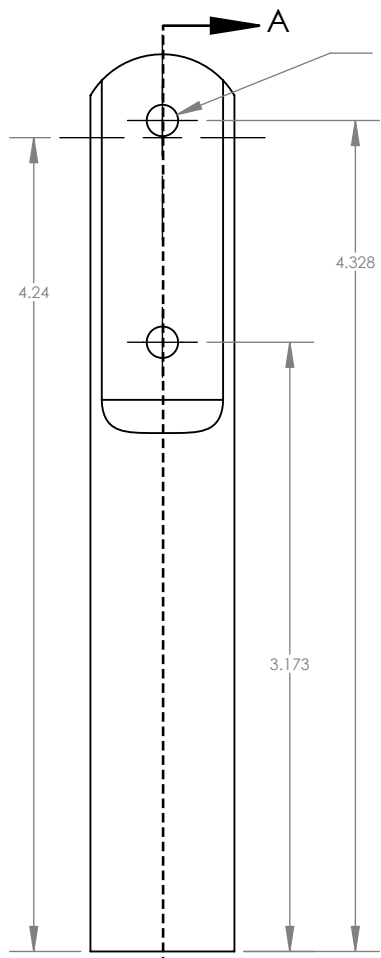
PROJECT: WHEELCHAIR SCISSOR BRAKES		
DESCRIPTION: SCISSOR BRAKE MOUNT PLATE		
COMMENTS: DEBURR PERIMETER EDGES, ANODIZE BLACK		
MODEL FILE NAME: 20010_WC SR BRAKE_MNT PLATE		
SIZE: A	WEIGHT (lbs): 0.024	MATERIAL: 6061-T6
	VERSION: 0.0	REVISION: 0.0A
SCALE: 2:1	SHEET <u>1</u> OF <u>1</u>	



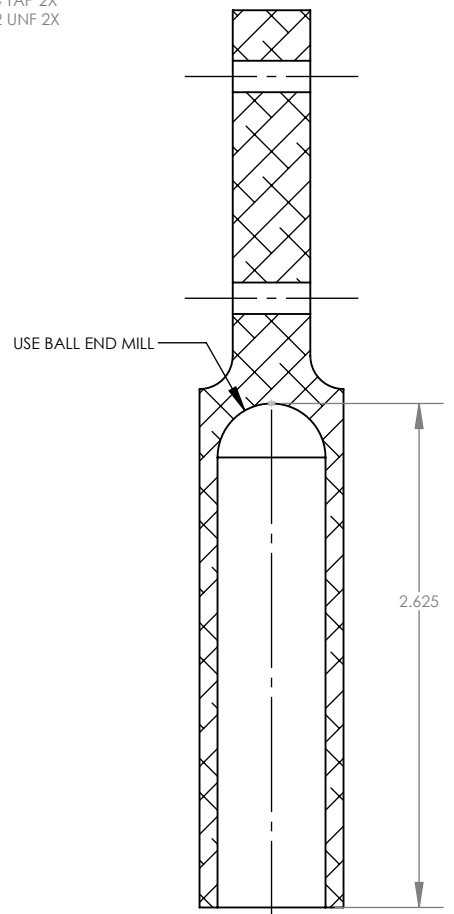
SECTION A-A



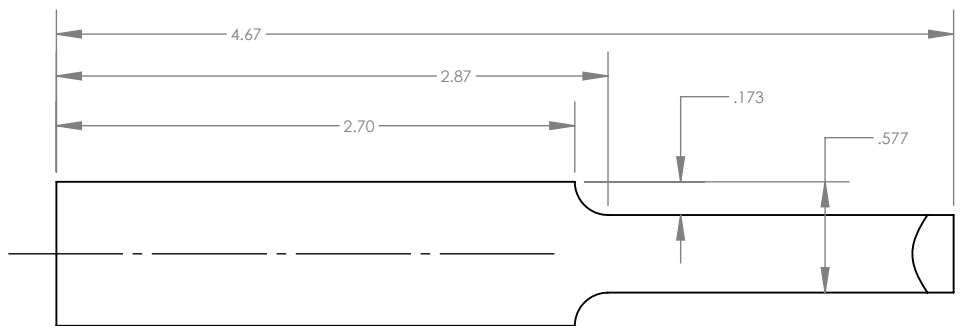
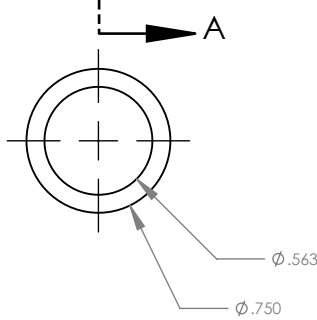
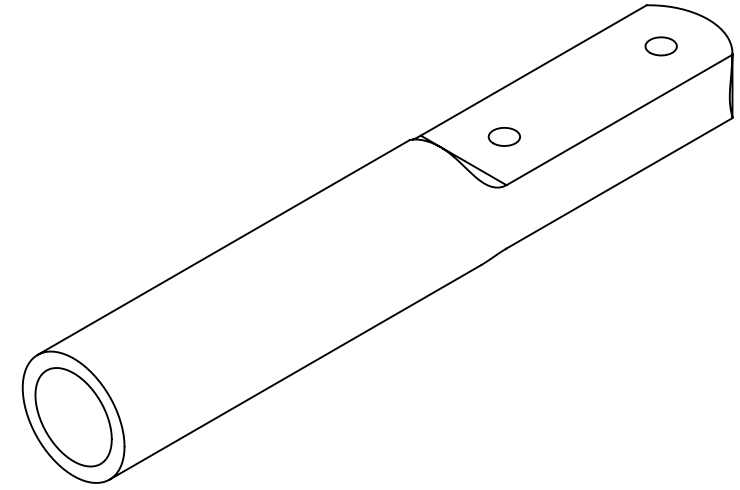
DRAWN BY	DATE	PROJECT: WHEELCHAIR SCISSOR BRAKES		
RJW	2024-01-08	DESCRIPTION: MOUNT ROD		
 THIRD ANGLE PROJECTION		COMMENTS: DEBURR PERIMETER EDGES, ANODIZE BLACK		
		MODEL FILE NAME: 20018_WC_SCR BRAKE_MNT ROD 1		
DIM. IN TOL. UNLESS OTHERWISE NOTED TWO PLACE DECIMAL +/- 0.01 THREE PLACE DECIMAL +/- 0.005 ANGULAR +/- 1.0		SIZE: A	WEIGHT (lbs): 0.083	MATERIAL: 5052-H32
		VERSION: 0.0	REVISION: 0.0A	
		SCALE: 1:1	SHEET <u> 1 </u> OF <u> 1 </u>	




Ø .164 TAP 2X
#10-32 UNF 2X



SECTION A-A



DRAWN BY	DATE	PROJECT: WHEELCHAIR SCISSOR BRAKES	
RJW	2024-01-23	DESCRIPTION: MOUNT ROD V2	
 THIRD ANGLE PROJECTION		COMMENTS: DEBURR PERIMETER EDGES, ANODIZE BLACK	
		MODEL FILE NAME: 20019_WC_SCR BRAKE_MNT ROD 2	
DIM. IN TOL. UNLESS OTHERWISE NOTED		SIZE:	WEIGHT (lbs):
TWO PLACE DECIMAL	+/- 0.01	A	0.108
THREE PLACE DECIMAL	+/- 0.005		VERSION: 0.0
ANGULAR	+/- 1.0		MATERIAL: 6061-T6 (SS)
		SCALE: 1:1	REVISION: 0.0A
		SHEET <u> 1 </u> OF <u> 1 </u>	