

ITEM OPPORTUNITY SYNOPSIS

Scouting Number:	2024-027
Name of the item to be scouted:	Circular Sheet Metal Cover and Cylindrical Housing
State item to be used in:	Massachusetts
Describe the Item:	
Please describe the item application/the end use of the item.	Cover: Circular sheet metal piece with a diameter of 24.29" with multiple openings. Fully finished, including rustproofing paint or coating. Sheet metal = 0.04" thickness. See attached drawing for complete measurements. Cylindrical Housing: Cylindrical housing with Cut Outs and Holes Made of Sheet Metal 0.04" Thickness. See attached drawing for complete measurements.
Supplier Information:	
Type of Supplier Being Sought (select from the list below):	
Manufacturer	
Contract Manufacturer	x
Distributor	
Other (Please Specify)	
Reason for Scouting Submission (select from the list below)	
2nd Supplier	
Price	
Re-Shore	
Past supplier no longer available	
New Product Startup	x
BABA	
Other (Please Specify)	
Summary of Technical Specifications and Performance Requirements:	
Describe the manufacturing processes (elaborate to provide as much detail as possible)	Sheet metal stamping/welding or forming, sheet metal finishing, paint/coating, and screw tapping.
Provide dimensions / size / tolerances / performance specifications of the item	See attached drawing.
List required materials needed to make the product, including materials of product components, if applicable	Sheet Metal
Are there applicable certification requirements?	
Yes	
No	x
Please explain:	
Are there any applicable regulations that apply to the production of this item?	
Yes	
No	x
Please explain:	
Are there any other standards / requirements?	
Yes	
No	x
Please explain:	
Additional Comments:	
Additional technical comments:	Rust resistant
Volume and Pricing:	
Estimated Potential Business Volume (i.e. #units per day, month, year):	Year 1 = 1,000 units Year 2 = 5,000 units Year 3 = 10,000 units
Estimated Target Price/Unit Cost Information:	Cover: Approximately \$30 per part Cylindrical Housing: Approximately \$65 per part
Delivery Requirements:	
When is it needed by? (Immediate, 30 days, 6 months, etc.)	As soon as possible
Describe packaging requirements (i.e. individually/group packaging, etc.)	Cardboard packaging
Where will this item be shipped?	Massachusetts

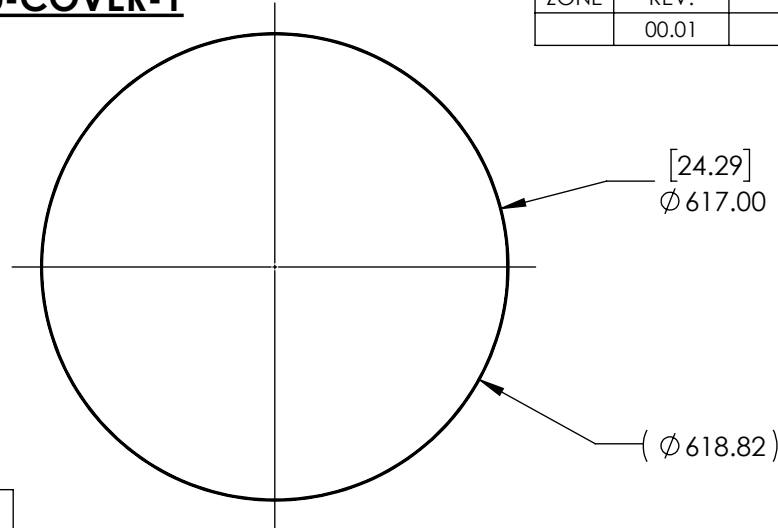
Additional Comments:

Is there other information you would like to include?

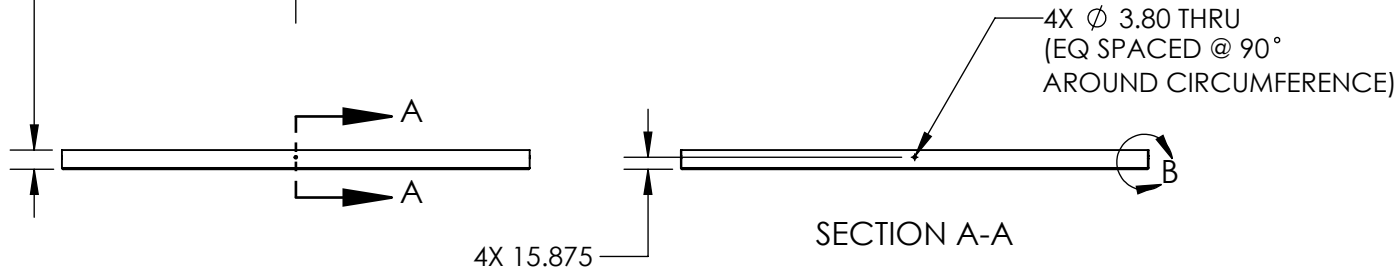
See attached drawing.

231220-COVER-1

REVISIONS				
ZONE	REV.	DESCRIPTION	DATE	APPROVED
	00.01	PRE-PRODUCTION RELEASE	12/20/2023	SH



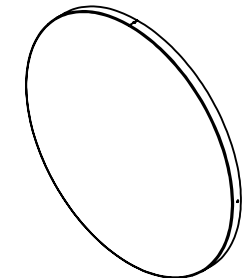
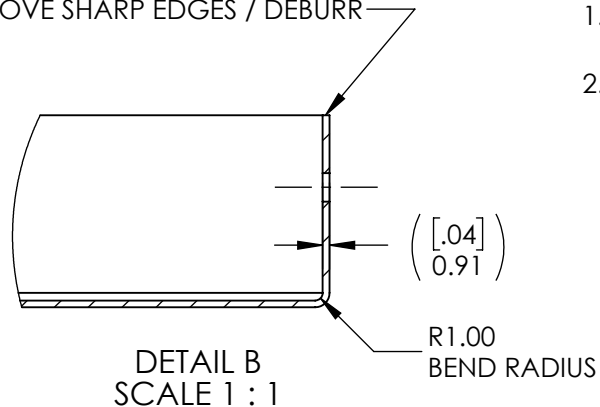
DASH NO.	HOLE LAYOUT
-1	N/A (SHEET 1 DEFINES ENTIRE PART)
-2	SEE SHEET 2
-3	SEE SHEET 3
-4	SEE SHEET 4



NOTES:

- SEE TABLE AND ADDITIONAL SHEETS FOR ALTERNATE PART GEOMETRY
- POWDER COAT, SEMI-GLOSS, BLACK, FINE TEXTURE

REMOVE SHARP EDGES / DEBURR



ISOMETRIC VIEW
FOR REFERENCE ONLY

UNLESS OTHERWISE SPECIFIED
DIMENSIONS ARE IN MILLIMETERS

TOLERANCES:
.XX ± 0.5
.XXX ± 0.25
ANGLES ± 1°

MATERIAL
A1008, 20 ga

FINISH
SEE NOTES

DO NOT SCALE DRAWING

	NAME	DATE
DESIGNED	MT	6/20/2023
DRAWN	SH	12/20/2023
APPROVED		

PROPRIETARY AND CONFIDENTIAL

THE INFORMATION CONTAINED IN THIS
DRAWING IS THE SOLE PROPERTY OF
ALTUS THERMAL. ANY REPRODUCTION
IN PART OR AS A WHOLE WITHOUT THE
WRITTEN PERMISSION OF ALTUS THERMAL
IS PROHIBITED.

ALTUS THERMAL

TITLE:

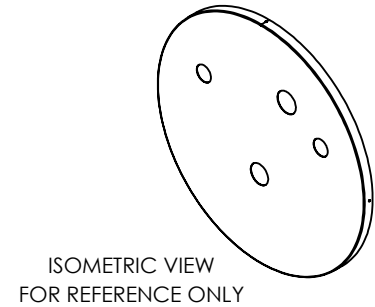
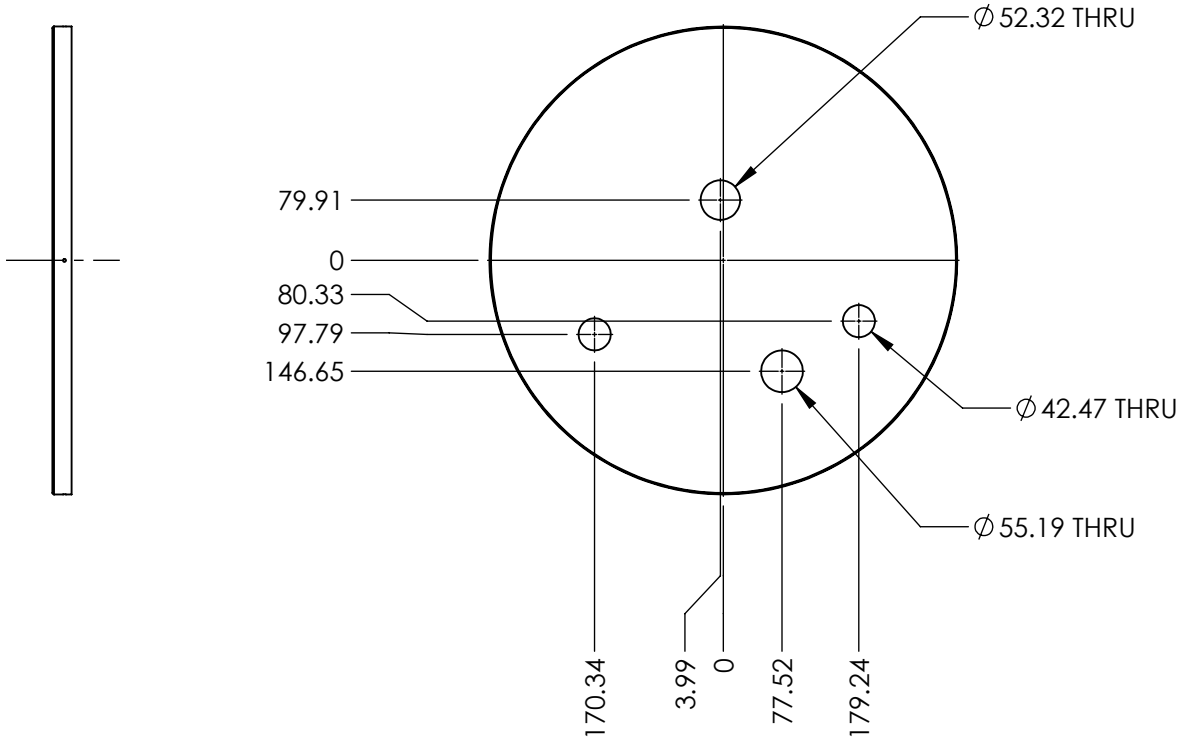
COVER

SIZE	DWG. NO.	REV
A	231220-COVER	00.01

SCALE: 1:10

SHEET 1 OF 4

231220-COVER-2



NOTES:

- SEE SHEET 1 FOR BASE PART GEOMETRY
- POWDER COAT, SEMI-GLOSS, BLACK, FINE TEXTURE

UNLESS OTHERWISE SPECIFIED
DIMENSIONS ARE IN MILLIMETERS

TOLERANCES:
.XX ± 0.5
.XXX ± 0.25
ANGLES $\pm 1^\circ$

MATERIAL
A1008, 20 ga

FINISH
SEE NOTES

DO NOT SCALE DRAWING

	NAME	DATE
DESIGNED	MT	6/20/2023
DRAWN	SH	12/20/2023
APPROVED		

PROPRIETARY AND CONFIDENTIAL

THE INFORMATION CONTAINED IN THIS
DRAWING IS THE SOLE PROPERTY OF
ALTUS THERMAL. ANY REPRODUCTION
IN PART OR AS A WHOLE WITHOUT THE
WRITTEN PERMISSION OF ALTUS THERMAL
IS PROHIBITED.

ALTUS THERMAL

TITLE:

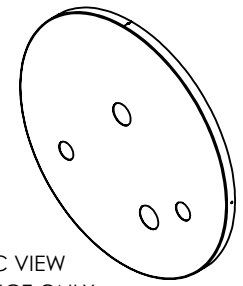
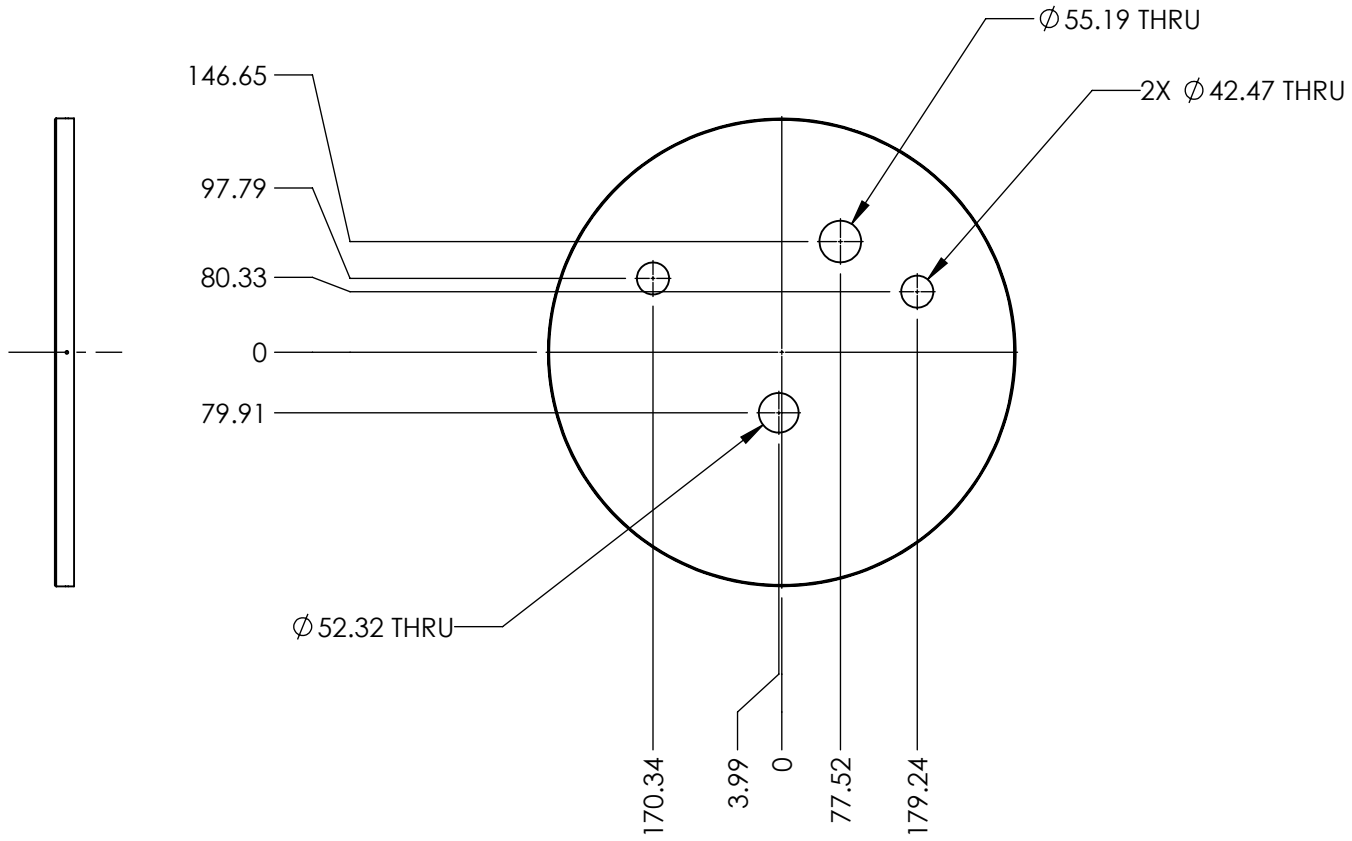
COVER

SIZE	DWG. NO.	REV
A	231220-COVER	00.01

SCALE: 1:10

SHEET 2 OF 4

231220-COVER-3

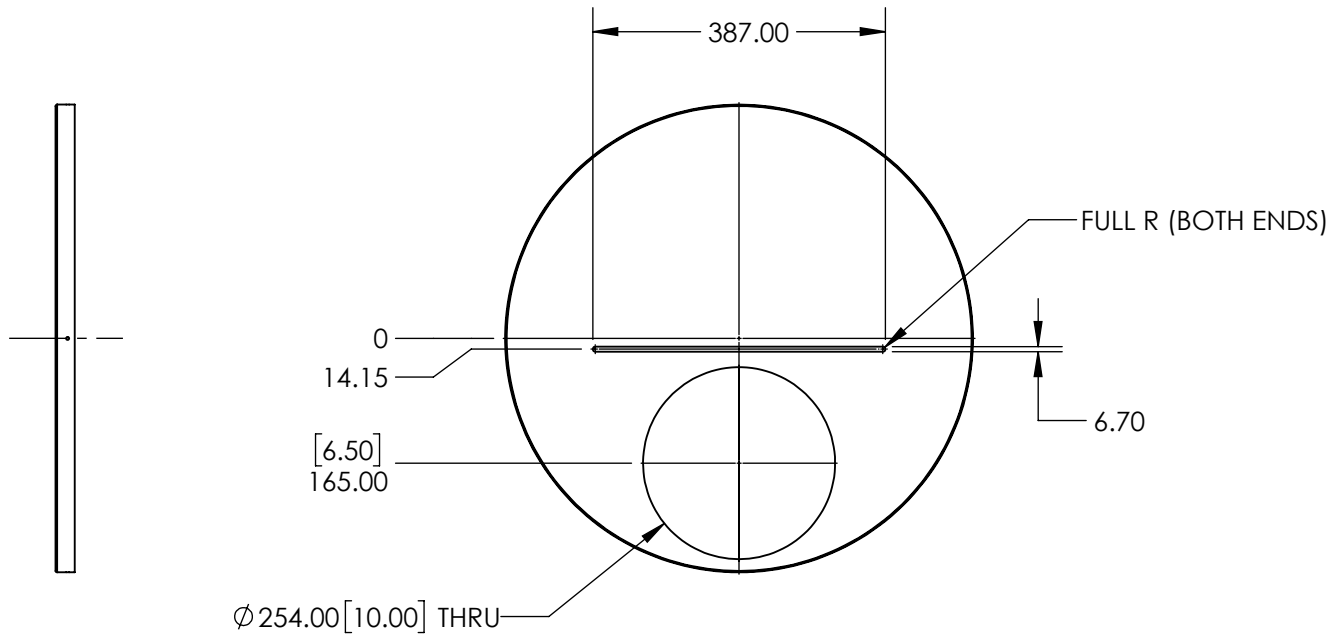


NOTES:

1. SEE SHEET 1 FOR BASE PART GEOMETRY
2. POWDER COAT, SEMI-GLOSS, BLACK, FINE TEXTURE

UNLESS OTHERWISE SPECIFIED DIMENSIONS ARE IN MILLIMETERS TOLERANCES: .XX ± 0.5 .XXX ± 0.25 ANGLES ± 1°		NAME	DATE	ALTUS THERMAL		
	DESIGNED	MT	6/20/2023	TITLE: COVER		
	DRAWN	SH	12/20/2023			
	APPROVED					
MATERIAL A1008, 20 ga	PROPRIETARY AND CONFIDENTIAL THE INFORMATION CONTAINED IN THIS DRAWING IS THE SOLE PROPERTY OF ALTUS THERMAL. ANY REPRODUCTION IN PART OR AS A WHOLE WITHOUT THE WRITTEN PERMISSION OF ALTUS THERMAL IS PROHIBITED.			SIZE	DWG. NO.	REV
FINISH SEE NOTES				A	231220-COVER	00.01
DO NOT SCALE DRAWING				SCALE: 1:10		SHEET 3 OF 4

231220-COVER-4



ISOMETRIC VIEW
FOR REFERENCE ONLY

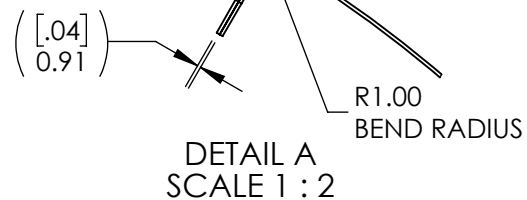
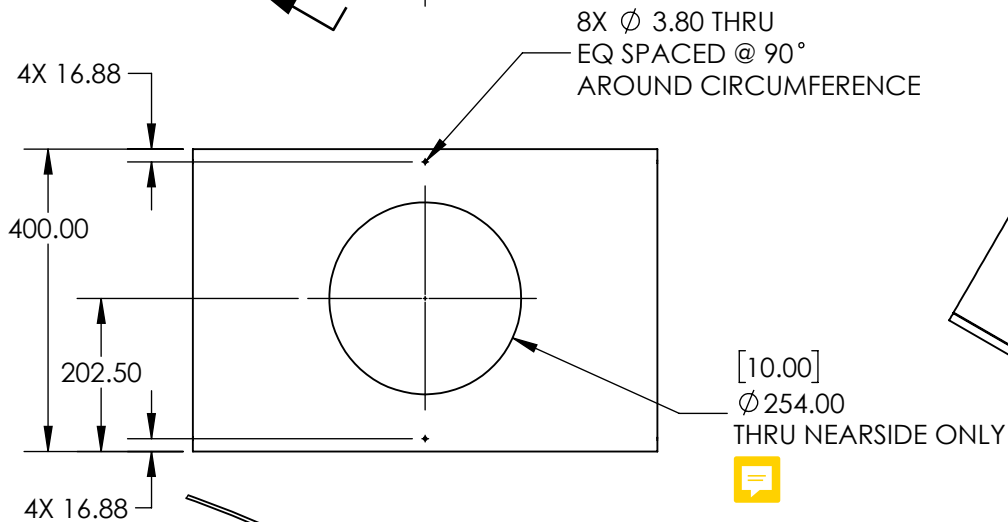
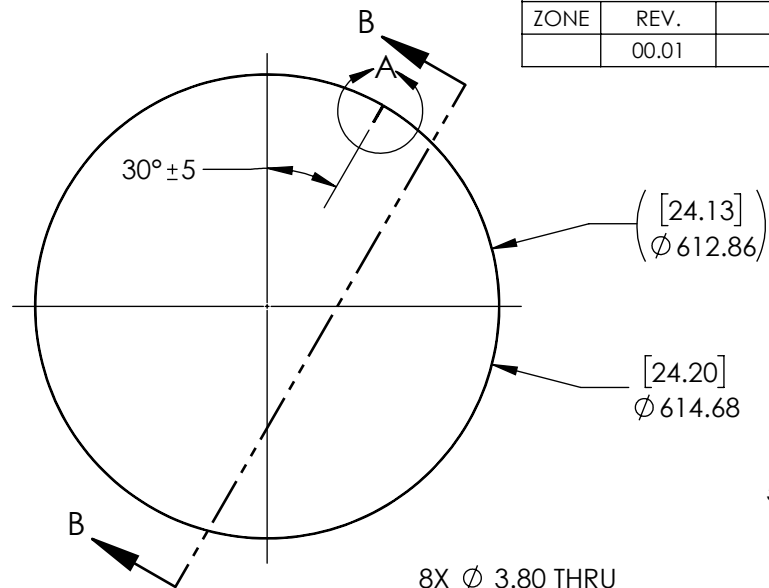
NOTES:

1. SEE SHEET 1 FOR BASE PART GEOMETRY
2. POWDER COAT, SEMI-GLOSS, BLACK, FINE TEXTURE

UNLESS OTHERWISE SPECIFIED DIMENSIONS ARE IN MILLIMETERS		NAME	DATE	ALTUS THERMAL		
	DESIGNED	MT	6/20/2023	TITLE: COVER		
	DRAWN	SH	12/20/2023			
	TOLERANCES: .XX ± 0.5 .XXX ± 0.25 ANGLES ± 1°	APPROVED				
MATERIAL A1008, 20 ga	PROPRIETARY AND CONFIDENTIAL			SIZE A	DWG. NO. 231220-COVER	REV 00.01
FINISH SEE NOTES	THE INFORMATION CONTAINED IN THIS DRAWING IS THE SOLE PROPERTY OF ALTUS THERMAL. ANY REPRODUCTION IN PART OR AS A WHOLE WITHOUT THE WRITTEN PERMISSION OF ALTUS THERMAL IS PROHIBITED.					
DO NOT SCALE DRAWING				SCALE: 1:10		SHEET 4 OF 4

B

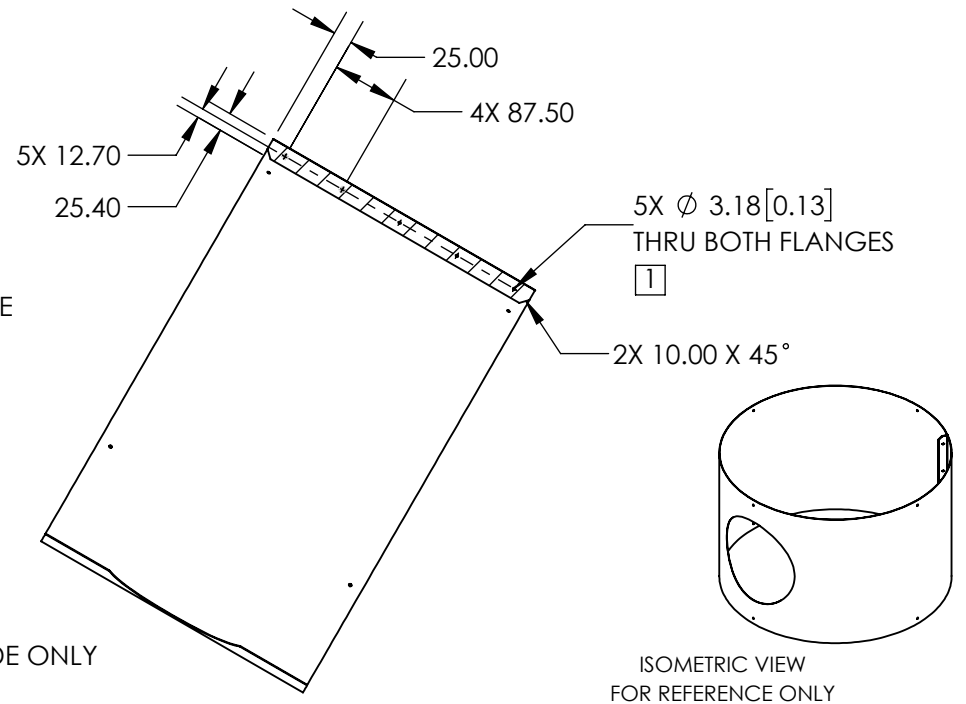
A



REVISIONS				
ZONE	REV.	DESCRIPTION	DATE	APPROVED
	00.01	PRE-PRODUCTION RELEASE	12/20/2023	SH

NOTES:

1. INSTALL 1/8" RIVETS (5X) TO SECURE FLANGES
2. DEBURR, BREAK ALL SHARP EDGES
3. POWDER COAT, SEMI-GLOSS, GREY, FINE TEXTURE

**SECTION B-B**ISOMETRIC VIEW
FOR REFERENCE ONLYUNLESS OTHERWISE SPECIFIED
DIMENSIONS ARE IN MILLIMETERSTOLERANCES:
.XX ± 0.25
.XXX ± 0.5
ANGLES ± 1°MATERIAL
A1008, 12 GaFINISH
SEE NOTES

DO NOT SCALE DRAWING

	NAME	DATE
DESIGNED	SH	12/20/2023
DRAWN	SH	12/20/2023
APPROVED		

PROPRIETARY AND CONFIDENTIALTHE INFORMATION CONTAINED IN THIS
DRAWING IS THE SOLE PROPERTY OF
ALTUS THERMAL. ANY REPRODUCTION
IN PART OR AS A WHOLE WITHOUT THE
WRITTEN PERMISSION OF ALTUS THERMAL
IS PROHIBITED.

ALTUS THERMAL

TITLE:

HOUSING, HP

SIZE	DWG. NO.	REV
A	231220-HPHS	00.01

SCALE: 1:10

SHEET 1 OF 1

2

1