

ITEM OPPORTUNITY SYNOPSIS

Name of the item to be scouted: Cold drawn extrusion materials

NAICS Code, if known:

Opportunities will be posted for 30 days unless another timeframe is given below.

Number of Days: 45

TECHNICAL INFORMATION

Describe the Item:

Please describe the item application/the end use of item. Cold drawn extrusion materials. Carbon steel, commercial quality alloys, aircraft quality alloys, stainless steels, tool steels, and high strength steels with exceptionally tight tolerances.

Provide the item number if applicable: (N95 Mask vs Protective Mask).

Supplier Information:

Type of Supplier being sought (select from list below)

Manufacturer

Contract Manufacturer

Distributor

Other (please specify)

Reason for scouting submission (select from list below)

2nd Supplier

Price

Re-Shore

Past supplier no longer available

New Product Startup

Other (please specify)

Summary of Technical Specifications and Performance Requirements:

Describe the manufacturing processes (elaborate to provide as much detail as possible)

Cold drawn 8620 carbon steel. 12 to 14 feet sections.

Provide dimensions / size / tolerances / performance specifications of the item. Cold drawn steel in 12 to 14 ft sections with .003 in tolerance see attached drawings

List required materials needed to make the product, including materials of product components, if applicable. 8620 carbon steel

Are there applicable certification requirements?

Yes

No

Please Explain:

Are there any applicable regulations that apply to the production of this item?

Yes

No

Please Explain:

Are there any other standards, requirements?

Yes

No

Please Explain:

Additional Comments:

Is there other information that would impact the item's performance or usefulness? Please explain.
tolerances for finished product will need to be +/- .003 inch

Business Information

Volume and Pricing:

Estimated Potential Business Volume (i.e. #Units per day, month, year):

10 thousand to 100 thousand pounds of product per year with various sizes.

Estimated Target Price / Unit Cost Information: (flexible and negotiable not accepted)

\$1.25 to \$3.25 per pound depending on shape

Delivery Requirements:

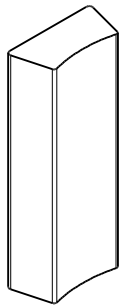
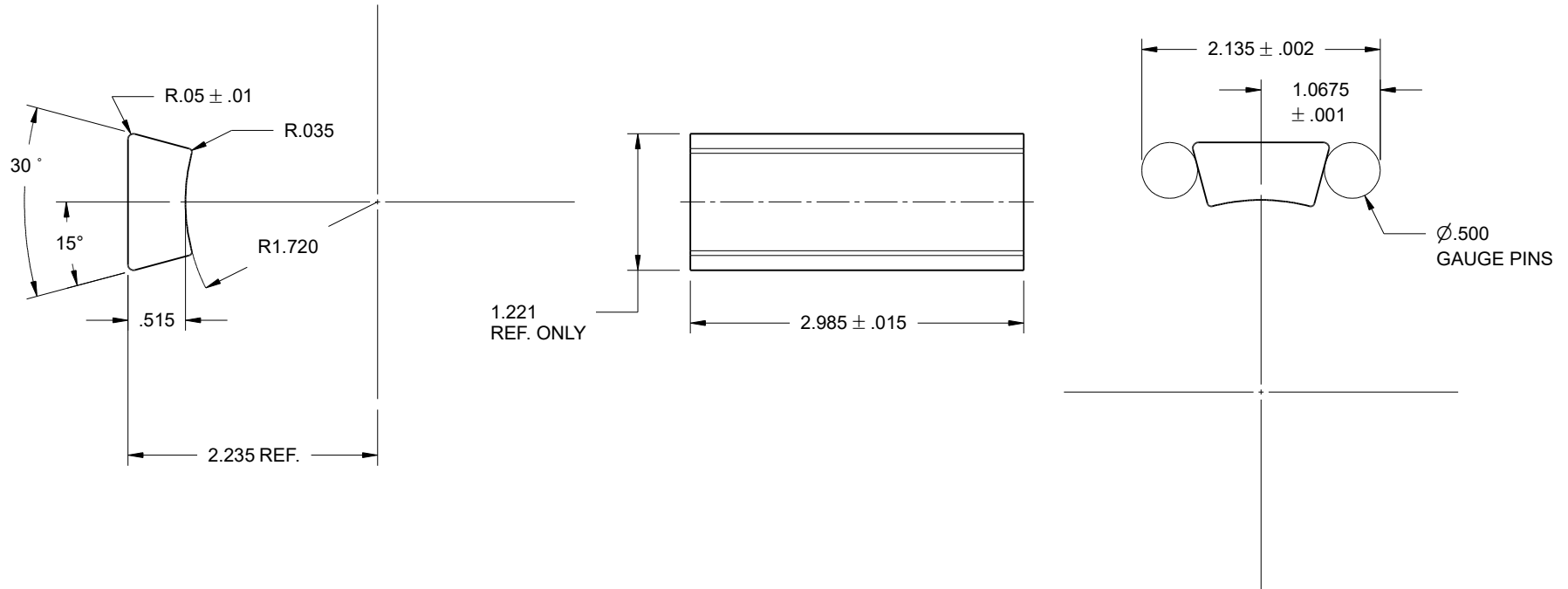
When is it needed by? (Immediate, 30 days, 6 months, etc) 3 to 6 months, sooner would be better

Describe packaging requirements (i.e., individually/ group packaging). 12 to 14 ft. lengths banded in 3 to 5 thousand pound bundles

Where will this item be shipped? Broussard, Louisiana

**NOTE: UNLESS OTHERWISE SPECIFIED,
ALL DIMENSIONS ARE IN INCHES.
MAXIMUM 125 R.M.S. MACHINE FINISH.
BREAK SHARP EDGES ON ALL CORNERS
AND HOLES, .01"-.03" R OR 45°.
CASE HARDEN TO HRC 58-62, .030"-.045" DEEP.**

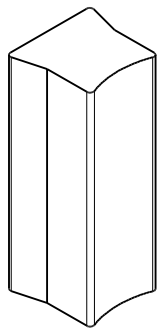
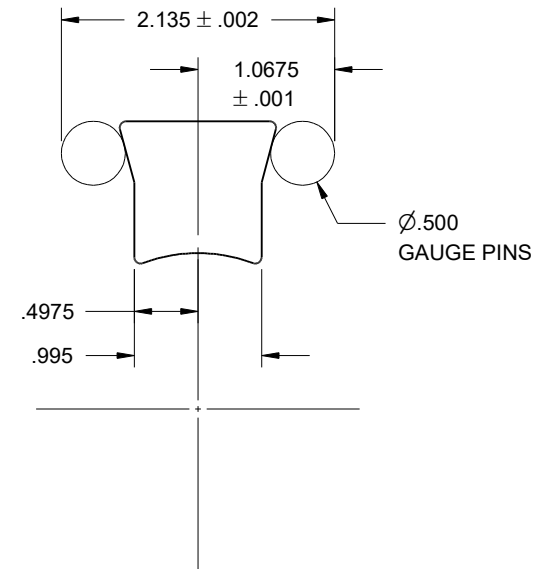
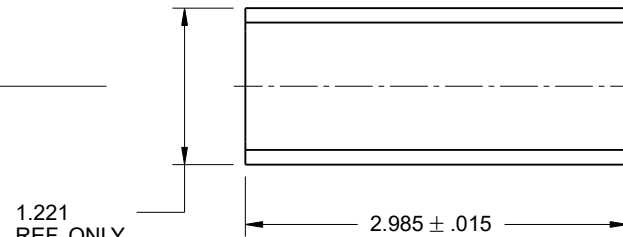
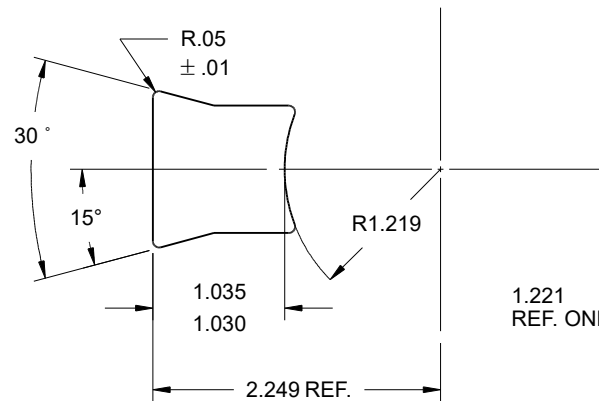
REVISIONS				
ZONE	REV	DESCRIPTION	DATE	APPROVED
	02	O.A.L. ORIGINALLY 3.0" +0/-0.015".	05/30/2023	J. ALLEMAN



UNLESS OTHERWISE SPECIFIED MACHINING DIMENSIONS: 3 PLACE DECIMAL .XXX ± .005 2 PLACE DECIMAL .XX ± .010 1 PLACE DECIMAL .X ± .020 FRACTIONAL ± 1/32	DRAWN BY:	DATE	KEYSTONE ENERGY TOOLS		
	C. FONTENOT	05/13/2015			
	CHECKED BY:		TITLE PE24774 YT / HYT 3.5" x 3.5" INSERT BLANK		
	J. ALLEMAN	07/22/2015			
<small>THIS DOCUMENT CONTAINS PROPRIETARY INFORMATION, AND SUCH INFORMATION MAY NOT BE DISCLOSED TO OTHERS FOR ANY PURPOSE NOR USED FOR MANUFACTURING PURPOSES WITHOUT THE PERMISSION OF KEYSTONE ENERGY TOOLS, LLC</small>	WEIGHT:	0.5 LBS. APPROX.	SIZE A		
	MTL. HARDNESS:	ANNEALED			
	MTL. GRADE:	8620	FSCM NO. DWG NO. PE24774 REV 02		
SCALE 1 : 1.5			SHEET 1 OF 1		

**NOTE: UNLESS OTHERWISE SPECIFIED,
ALL DIMENSIONS ARE IN INCHES.
MAXIMUM 125 R.M.S. MACHINE FINISH.
BREAK SHARP EDGES ON ALL CORNERS
AND HOLES, .01"-.03" R OR 45°.
CASE HARDEN TO HRC 58-62, .030"-.045" DEEP.**

REVISIONS				
ZONE	REV	DESCRIPTION	DATE	APPROVED
	03	O.A.L. ORIGINALLY 3.0" +0/- .015".	05/30/2023	J. ALLEMAN



UNLESS OTHERWISE SPECIFIED MACHINING DIMENSIONS: 3 PLACE DECIMAL .XXX ± .005 2 PLACE DECIMAL .XX ± .010 1 PLACE DECIMAL .X ± .020 FRACTIONAL ± 1/32 <small>THIS DOCUMENT CONTAINS PROPRIETARY INFORMATION, AND SUCH INFORMATION MAY NOT BE DISCLOSED TO OTHERS FOR ANY PURPOSE NOR USED FOR MANUFACTURING PURPOSES WITHOUT THE PERMISSION OF KEYSTONE ENERGY TOOLS, LLC</small>	DRAWN BY: C. FONTENOT	DATE 10/29/2015	KEYSTONE ENERGY TOOLS		
	CHECKED BY: J. ALLEMAN	10/29/2015			
	WEIGHT:	0.95 LBS. APPROX.	TITLE PE30358-1 YT / HYT 1" BJ REDUCER INSERT BLANK		
	MTL. HARDNESS:	ANNEALED	SIZE A	FSCM NO.	DWG NO. PE30358-1
	MTL. GRADE:	8620	SCALE 1 : 1.5	SHEET	1 OF 1
				REV	03