

**** COMPLETE THIS FORM TO INITIATE SUPPLIER SCOUTING ****

MEPNN Supplier Scouting Opportunity Synopsis

(To view in larger text, press Ctrl + Simultaneously)

The submitting entity agrees to notify NIST MEP of the status of actions taken as a result of this scouting instance within 30 days after receiving a results report.

I agree

Number of days to be posted if other than 30

120

Item to be Scouted

Extruded Copper Box Connector

Please describe the item application/the end use of the item

Electrial switch

Supplier Customer/Product NAICS Code, if known

TECHNICAL INFORMATION

1. Supplier Information

1a. Type of supplier being sought

Other

If other, please specify type of supplier

all of the above

1b. Reason for scouting submission

Other

If other, please specify reason

2nd Supplier, Re-shore
Asia supplier not reliable, long lead time, heavy air freight cost

2. Summary of Technical Specifications and Performance Requirements

2a. Describe the manufacturing process

Copper Extrusion: Rectangular Hollow (Symmetrical)

2b. Provide dimensions, size, tolerances, and performance specifications for the item

Outside Rectangle .737 x .466/.455 with .015+/- .010 corner radii.
Symetrical Inside rectangle .462/.432 x .326/.323 with inside corner radii .010 +/- .005. The extrusion overall length is 10 foot.
Note: Wall dimensions .149/.145 (2 times) and .070/.066 (2 times)

2c. List required materials needed to make the product, including materials of product components

Material: 120 Copper Alloy, 1/4 Hard. Hardness Rockwell B20-B54

Note: Company may consider 110 Copper Alloy 1/2 hard or 3/4 hard

2d. Are there applicable certification requirements?

Yes

If yes, please explain applicable certification requirements

Material Certifications required(Physical and Chemical)

2e. Are there applicable regulations?

Yes

If yes, please explain applicable regulations

Material Certification is important for our UL requirements

2f. Are there any other standards, requirements, etc.?

No

If yes, please explain other standards, requirements, etc.

2g. Additional Comments

The extrusion straightness is important to our manufacturing process since we bar feed in a CNC Turning center.

Bow or twist is not acceptable

BUSINESS INFORMATION

3. Volume and Pricing

3a. Estimated potential business volume (i.e. # Units per day/month/year)

20000 and up to 40000 feet per year (2000 extrusions 10 foot long and up to 4000 extrusions 10 foot long per year). or Monthly shipments 2000 feet/ month and up to 4000 feet / month

3b. Estimated target price/unit cost information (flexible and negotiable not accepted)

\$110.00 per 10 foot extrusion. This is our current price

4. Delivery Requirements

4a. When is it needed by? (immediate, 30 days, 6 months, etc.)

6 months

4b. Describe packaging requirements (i.e. individually/group packaging)

Group Packing, 250 extrusions per wooden Box on a Skid

4c. Where will this item be shipped?

Bristol, PA

5. Additional Comments

5a. Is there other information you would like to include?

6. Requesting Scout

6a. Scout Name

Teri Grumbrecht

6b. Center Name

DVIRC

If an organization other than a Center, please enter

6c. Scout Email

tgrumbrecht@dvirc.org

Supplier Scouting Number (NIST MEP use only)

2023-016

Attachments

700-0112 revA Extrusion, Box Connector.PDF

Created at 1/18/2023 3:21 PM by ☐ Teri Grumbrecht
Last modified at 1/24/2023 3:52 PM by ☐ Andrew C. Peterson

CLOSE

MEP Connect

- [Home](#)
- [MEIS](#)
- [National Calendar](#)
- [Contact MEP](#)
- [Ask the Network](#)

Resources

- [Privacy Policy / Security](#)
- [Notice / Accessibility](#)
- [Statement](#)
- [Disclaimer](#)
- [FOIA](#)
- [Information Quality](#)

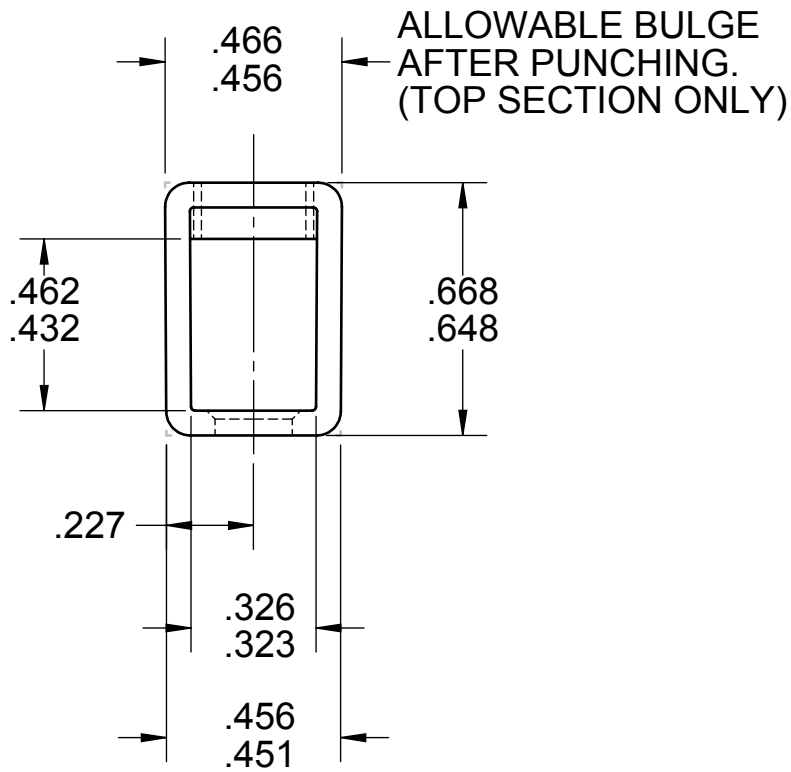
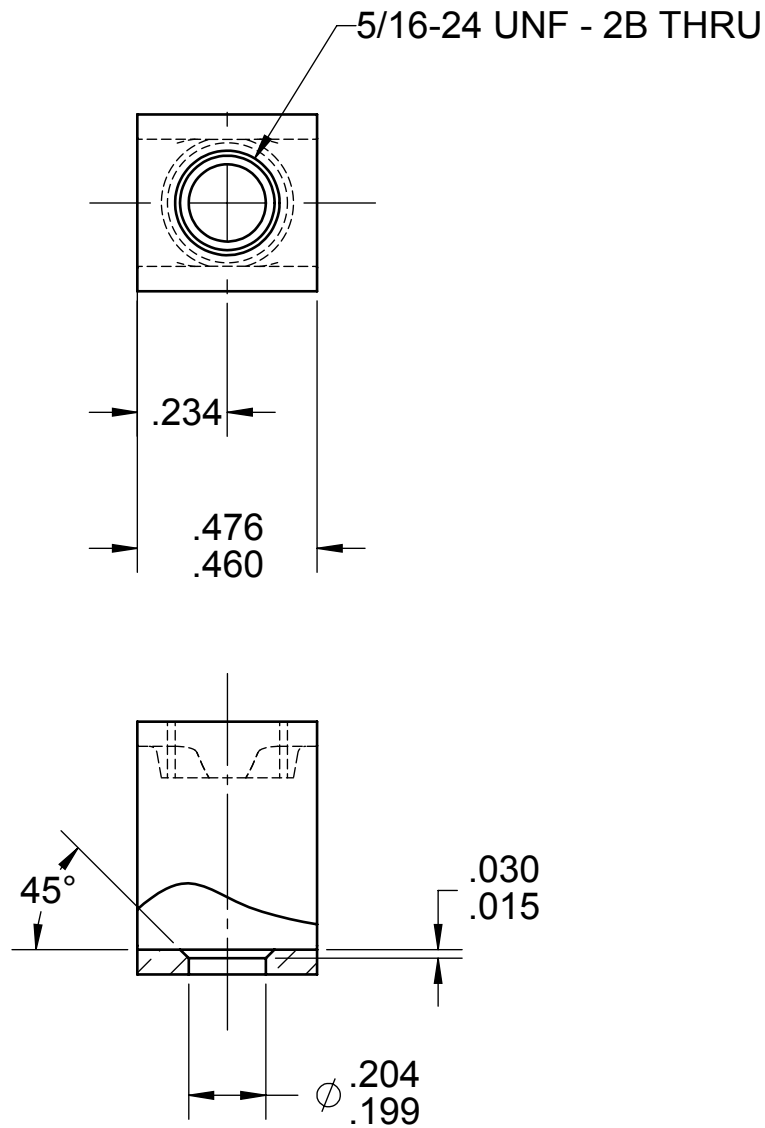
Follow Us

General Information

The **Manufacturing Extension Partnership (MEP)** connects the MEP National Network and is a program within the **National Institute of Standards and Technology (NIST)**.
For assistance using MEP Connect, please contact the **webmaster**.
NIST is an agency of the **U.S.Commerce Department**
For information on other federal programs, see **USA.gov**

REV	DESCRIPTION	DATE	APPR.
C	Redraw in Solidworks; Add Chart with Unplated and Nickle plated options; Material was Copper Code No. B.O.S.	5/11/2012	SFS

PART NO	DESCRIPTION	FINISH
11388-01	BOX CONNECTOR, TIN PLATED	BRIGHT TIN PLATE .0001/.0002 THK
11388-01U	BOX CONNECTOR, UN-PLATED	NONE
11388-01N	BOX CONNECTOR, NICKLE PLATED	NICKLE PLATE .0001/.0002 THK

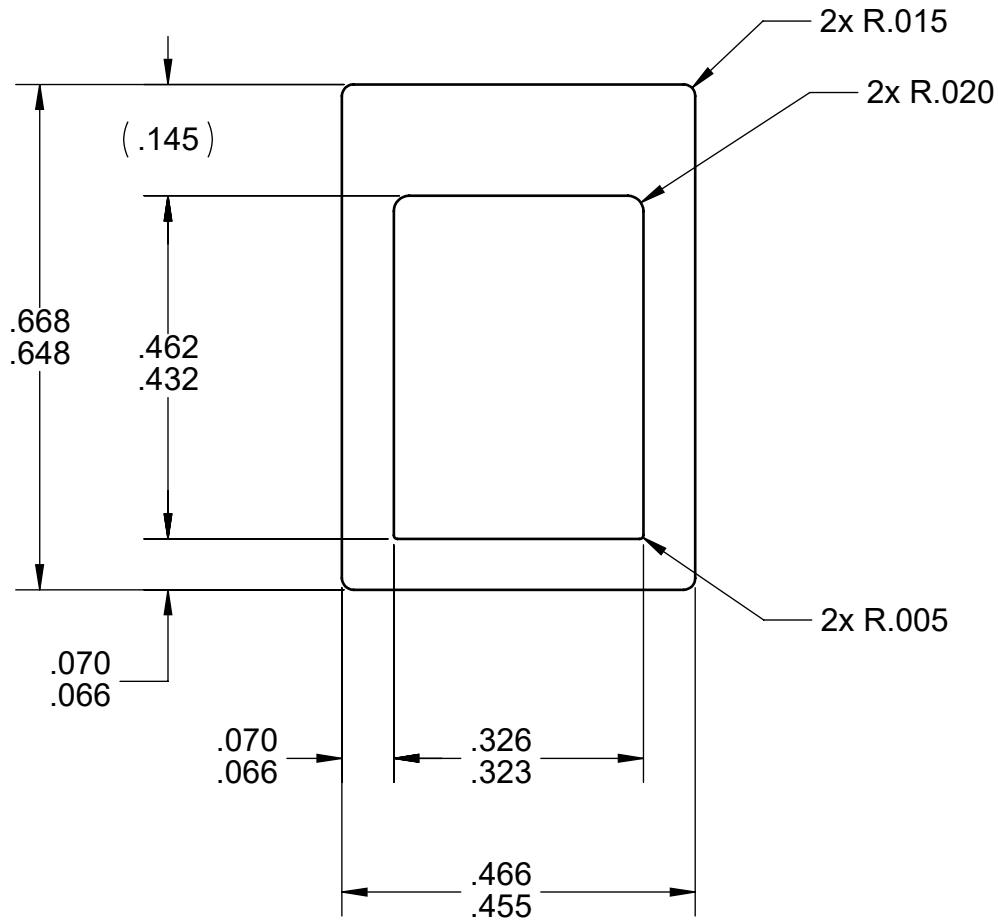


NOTES:

1. SURFACE FINISH TO BE OTHERWISE SPECIFIED. 63 UNLESS
2. BREAK ALL CORNERS AND SHARP EDGES UNLESS OTHERWISE SPECIFIED.
3. MATERIAL: 120 COPPER, 1/4 HARD. HARDNESS: ROCKWELL B20-B54
4. FINISH: SEE CHART
5. REFERENCE: ILSCO D8391










GEOMETRIC TOLERANCE UNLESS OTHERWISE SPECIFIED					DIMENSION TOLERANCE (UNLESS OTHERWISE SPECIFIED)		CAD GENERATED DRAWING. DO NOT MANUALLY UPDATE.		TITLE: <div>BOX CONNECTOR, METER TEST SWITCH</div>					
FORM		MACHINED	OTHER	THE INFORMATION ON THIS DRAWING IS CONFIDENTIAL. UNAUTHORIZED USE IS PROHIBITED.										
				CUSTOMER:			801251							
				FRACTION	± 1/32	DRAWN:	SFS	DATE:	5/11/2012	SEE NOTES FOR MATERIAL AND FINISH		DWG. NO.:	11388-01	
1/2 SUM OF DIAMETRAL TOLS., TIR				0.00	± 0.015	CHECKED:	-	DATE:	-	SIZE: B	SCALE:	2:1	SHEET: 1 OF 1	REV: C
SURFACE FINISH UNLESS SPECIFIED:				250 FOR FRACTIONAL DIM. 125 FOR 0.00 DIM. 63 FOR 0.000 DIM.	0.000	± 0.005	USED ON DWG NO:		-					

REV	ECN	DESCRIPTION	DATE	APPR.
2		Release For Quote	4/8/2022	SFS



NOTES:

1. MATERIAL: 120 Copper Alloy, 1/4 Hard.
Hardness Rockwell B20-B54
2. Purchased In 120 inch lengths, ± 0.5 inch
3. Material Certs are required with each delivery.
4. FINISH: None

FOR INTERNAL USE ONLY		GEOMETRIC TOLERANCE UNLESS OTHERWISE SPECIFIED					DIMENSION TOLERANCE (UNLESS OTHERWISE SPECIFIED)		CAD GENERATED DRAWING. DO NOT MANUALLY UPDATE.		TITLE: <div>Ⓢ</div> Extrusion, Box Connector				
		FORM		MACHINED		OTHER			THE INFORMATION ON THIS DRAWING IS CONFIDENTIAL. UNAUTHORIZED USE IS PROHIBITED.						
MANUFACTURE QTY						.001"/1", TIR	1/16"/FT, TIR	FRACTION	± 1/32	JOB #: 8012					
						.002"/1", TIR	1/8"/FT, TIR	0.00	± 0.015	DRAWN: SFS	DATE: 4/6/2022				
			1/2 SUM OF DIAMETRAL TOLS., TIR					0.000	± 0.005	CHECKED: -	DATE: -				
JOB # IF DIFFERENT FROM TITLE BLOCK		SURFACE FINISH UNLESS SPECIFIED:					<div><div>250</div>FOR FRACTIONAL DIM.</div> <div><div>125</div>FOR 0.00 DIM.</div> <div><div>63</div>FOR 0.000 DIM.</div>	0.0000	± 0.0005	USED ON DWG NO: -		SIZE: A	SCALE: 4:1	SHEET: 1 OF 1	REV: 2



EP BASE 8511

Handwritten tag with illegible text.

Handwritten tag with illegible text.

46.5
46.5

46.2
46.6

