

ITEM OPPORTUNITY SYNOPSIS:

Item to be Scouted

Supplier Scouting Number

NAICS Code, if known

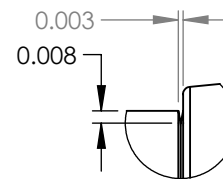
TECHNICAL INFORMATION:	1. Describe the Item:	
		a. Please describe the item application/ the end use of item.
	2. Summary of Technical Specifications and Performance Requirements:	b. Provide the item number <u>if applicable</u> : (N95 Mask vs Protective Mask).
		a. Provide dimensions / size / tolerances / performance specifications for the item.
		b. List required materials needed to make the product, Including materials of product components, if applicable.
		c. Are there applicable certification requirements to supply this item? (i.e. ISO certification) Are there any applicable regulations that apply to the production of this item? (i.e. FDA regulations or EPA regulations) Are there any other standard requirements? (i.e. ASME Standard, IEEE Standard) Please specify.
d. Describe the manufacturing processes (elaborate to provide as much detail as possible).		
e. Additional Comments:	Is there other information that would impact the item's performance or usefulness? Please explain.	

BUSINESS INFORMATION:		f. Potential Business Volume Estimate (i.e., # Units Per Day, Month, Year):
		g. Target Price / Unit Cost Information:
	3. Delivery Requirements:	a. When is it needed by? (Immediate, 30 Days, 6 months, etc.)
		b. Describe packaging requirements (i.e., individually/ group packaging).
	c. Where is this opportunity located? Is there a preferred shipping proximity - if applicable?	
	4. Additional Comments:	
	a. Opportunities will be posted for 30 days unless another timeframe is given below <div style="text-align: center;">_____ days</div> b. Is there other information you would like to include?	

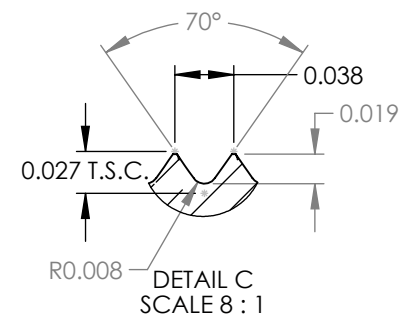
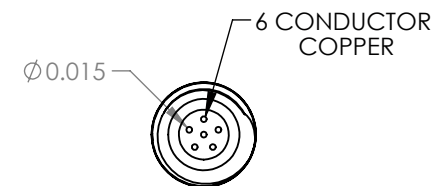
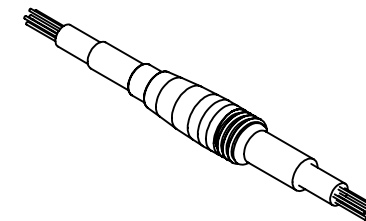
Photos or diagrams of the item (helpful but not required).




1) HOUSING TO BE 17.4 STAINLESS
2) TEST PRESSURE: 1,000 MPa
WORKING PRESSURE: 600 MPa



DETAIL B
SCALE 8 : 1



UNLESS OTHERWISE SPECIFIED:		NAME	DATE	 <div>APPLIED RESEARCH ASSOCIATES, INC</div> <div>250 Beaverville Rd., Randolph, VT 05060 Tel:(802)728-4588 Fax:(802)728-9871</div>	
DIMENSIONS ARE IN INCHES		DRAWN	KKB		7/2/2019
TOLERANCES:		CHECKED	--		--
ANGULAR ± 0.5°		ENG APPR.	--		--
FRACTIONAL ±1/32		MFG APPR.	--		--
TWO PLACE DECIMAL ±0.01		G.A.	--		--
THREE PLACE DECIMAL ±0.005		<div>PROPRIETARY AND CONFIDENTIAL</div> <div>THE INFORMATION CONTAINED IN THIS DRAWING IS THE SOLE PROPERTY OF APPLIED RESEARCH ASSOCIATES, INC. ANY REPRODUCTION IN PART OR AS A WHOLE WITHOUT THE WRITTEN PERMISSION OF APPLIED RESEARCH ASSOCIATES, INC. IS PROHIBITED.</div>			
MATERIAL		<div>TITLE:</div> <div>CONNECTOR, PRESS FEEDTHROUGH</div>			
ASM.					
FINISH					
--					
DO NOT SCALE DRAWING		<div>SIZE DWG. NO. REV.</div> <div>A CONNECTOR, PRESS FEEDTHROUGH</div>			
		<div>SCALE:2:1 WEIGHT: 0.01 lbs. SHEET 1 OF 1</div>			

REVISIONS				
REV.	DATE	ECN NO.	DESCRIPTION	APPROVED